



SZABO SCANDIC

Part of Europa Biosite

Produktinformation



Forschungsprodukte & Biochemikalien



Zellkultur & Verbrauchsmaterial



Diagnostik & molekulare Diagnostik



Laborgeräte & Service

Weitere Information auf den folgenden Seiten!
See the following pages for more information!



Lieferung & Zahlungsart

siehe unsere [Liefer- und Versandbedingungen](#)

Zuschläge

- Mindermengenzuschlag
- Trockeneiszuschlag
- Gefahrgutzuschlag
- Expressversand

SZABO-SCANDIC HandelsgmbH

Quellenstraße 110, A-1100 Wien

T. +43(0)1 489 3961-0

F. +43(0)1 489 3961-7

mail@szabo-scandic.com

www.szabo-scandic.com

[linkedin.com/company/szaboscandic](https://www.linkedin.com/company/szaboscandic) 

SNAI1 (Human) Matched Antibody Pair

Catalog # : H00006615-AP21

規格 : [1 Set]

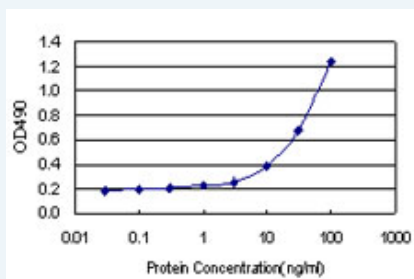
[List All](#)

Specification

Product Description: This antibody pair set comes with matched antibody pair to detect and quantify protein level of human SNAI1.

Reactivity: Human

Quality Control Testing: Standard curve using recombinant protein (H00006615-P01) as an analyte.



Sandwich ELISA detection sensitivity ranging from 3 ng/ml to 100 ng/ml.


Supplied Product: Antibody pair set content:
 1. Capture antibody: rabbit MaxPab® affinity purified polyclonal anti-SNAI1 (100 ug)
 2. Detection antibody: mouse purified polyclonal anti-SNAI1 (20 ug)
 *Reagents are sufficient for at least 1-2 x 96 well plates using recommended protocols.

Storage Instruction: Store reagents of the antibody pair set at -20°C or lower. Please aliquot to avoid repeated freeze thaw cycle. Reagents should be returned to -20°C storage immediately after use.

MSDS:  [Download](#)

Applications

ELISA Pair (Recombinant protein)

 [Protocol Download](#)

Gene Information

Entrez GeneID: [6615](#)

Gene Name: SNAI1

Gene Alias: SLUGH2,SNA,SNAH,dJ710H13.1

Gene Description: snail homolog 1 (Drosophila)

Omim ID: [604238](#)

Gene Ontology: [Hyperlink](#)

Gene Summary: The Drosophila embryonic protein snail is a zinc finger transcriptional repressor which downregulates the expression of ectodermal genes within the mesoderm. The nuclear protein encoded by this gene is structurally similar to the Drosophila snail protein, and is also thought to be critical for mesoderm formation in the developing embryo. At least two variants of a similar processed pseudogene have been found on chromosome 2. [provided by RefSeq]

Other Designations: OTTHUMP00000031680,snail 1 homolog,snail 1 zinc finger protein,snail 1, zinc finger protein

Gene Pathway

[Adherens junction](#)

Related Disease

[Breast cancer](#) [Breast Neoplasms](#) [Cleft Lip](#) [Cleft Palate](#) [Genetic Predisposition to Disease](#) [Head and Neck Neoplasms](#) [Neoplasm Metastasis](#) [Neoplasm Recurrence, Local](#) [Neoplasms](#) [Neoplasms, Second Primary](#) [Obesity](#) [Ovarian Neoplasms](#)

[服務條款](#) | [隱私權政策](#) | [著作及商標](#) | [網站地圖](#)

©2016 亞諾法生技股份有限公司 Abnova Corporation. 版權所有.