



# SZABO SCANDIC

Part of Europa Biosite

## Produktinformation



Forschungsprodukte & Biochemikalien



Zellkultur & Verbrauchsmaterial



Diagnostik & molekulare Diagnostik



Laborgeräte & Service

Weitere Information auf den folgenden Seiten!  
See the following pages for more information!



### Lieferung & Zahlungsart

siehe unsere [Liefer- und Versandbedingungen](#)

### Zuschläge

- Mindermengenzuschlag
- Trockeneiszuschlag
- Gefahrgutzuschlag
- Expressversand

### SZABO-SCANDIC HandelsgmbH

Quellenstraße 110, A-1100 Wien

T. +43(0)1 489 3961-0

F. +43(0)1 489 3961-7

[mail@szabo-scandic.com](mailto:mail@szabo-scandic.com)

[www.szabo-scandic.com](http://www.szabo-scandic.com)

[linkedin.com/company/szaboscandic](https://www.linkedin.com/company/szaboscandic) 

# SNAP25 purified MaxPab rabbit polyclonal antibody (D01P) MaxPab®

Catalog # : H00006616-D01P

規格 : [ 100 ug ]

[List All](#)

## Specification

**Product Description:** Rabbit polyclonal antibody raised against a full-length human SNAP25 protein.

**Immunogen:** SNAP25 (NP\_003072.2, 1 a.a. ~ 206 a.a) full-length human protein.

**Sequence:**  
 MAEDADMRNELEEMQRRADQLADESLESTRMLQLVEESKDAGIRTLV  
 MLDEQGEQLDRVEEGMNHINQDMKEAEKNLKDLGKCCGLFICPCNKLKS  
 SDAYKKAWSGNNQDGVVASQPARVVDEREQMAISGGFIRRVTNDARENE  
 MDENLEQVSGIIGNLRHMALDMGNEIDTQNRQIDRIMEKADSNKTRIDEAN  
 QRATKMLGSG

**Host:** Rabbit

**Reactivity:** Human

**Quality Control Testing:** Antibody reactive against mammalian transfected lysate.

**Storage Buffer:** In 1x PBS, pH 7.4

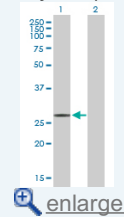
**Storage Instruction:** Store at -20°C or lower. Aliquot to avoid repeated freezing and thawing.

**MSDS:**  [Download](#)

**Datasheet:**  [Download](#)

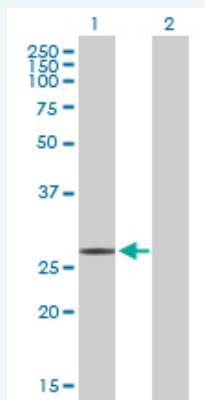
## Application Image

Western Blot (Transfected lysate)



## Applications


### Western Blot (Transfected lysate)



Western Blot analysis of SNAP25 expression in transfected 293T cell line ([H00006616-T01](#)) by SNAP25 MaxPab polyclonal antibody.

Lane 1: SNAP25 transfected lysate(23.30 KDa).

Lane 2: Non-transfected lysate.

 [Protocol Download](#)

## Gene Information

Entrez GeneID: [6616](#)

GeneBank [NM\\_003081.2](#)  
Accession#:

Protein [NP\\_003072.2](#)  
Accession#:

Gene Name: SNAP25

Gene Alias: FLJ23079, RIC-4, RIC4, SEC9, SNAP, SNAP-25, bA416N4.2, dJ1068F16.2

Gene Description: synaptosomal-associated protein, 25kDa

Omim ID: [600322](#)

Gene Ontology: [Hyperlink](#)

**Gene Summary:** Synaptic vesicle membrane docking and fusion is mediated by SNAREs (soluble N-ethylmaleimide-sensitive factor attachment protein receptors) located on the vesicle membrane (v-SNAREs) and the target membrane (t-SNAREs). The assembled v-SNARE/t-SNARE complex consists of a bundle of four helices, one of which is supplied by v-SNARE and the other three by t-SNARE. For t-SNAREs on the plasma membrane, the protein syntaxin supplies one helix and the protein encoded by this gene contributes the other two. Therefore, this gene product is a presynaptic plasma membrane protein involved in the regulation of neurotransmitter release. Two alternative transcript variants encoding different protein isoforms have been described for this gene. [provided by RefSeq]

**Other Designations:** OTTHUMP00000030267, OTTHUMP00000030268, resistance to inhibitors of cholinesterase 4 homolog, synaptosomal-associated protein 25

### Gene Pathway

[SNARE interactions in vesicular transport](#)

### Related Disease

[Alzheimer Disease](#) [Alzheimer disease](#) [Attention](#) [Attention Deficit Disorder with Hyperactivity](#) [Autistic Disorder](#) [Bipolar Disorder](#) [Cardiovascular Diseases](#) [Cognition](#) [Cognition Disorders](#) [Depressive Disorder, Major](#) [Diabetes Complications](#) [Epilepsy](#) [Epilepsy](#) [Genetic Predisposition to Disease](#) [Memory](#) [Mental Disorders](#) [Mental Retardation](#) [Metabolic Syndrome X](#) [Narcolepsy](#)

... see more