



SZABO SCANDIC

Part of Europa Biosite

Produktinformation



Forschungsprodukte & Biochemikalien



Zellkultur & Verbrauchsmaterial



Diagnostik & molekulare Diagnostik



Laborgeräte & Service

Weitere Information auf den folgenden Seiten!
See the following pages for more information!



Lieferung & Zahlungsart

siehe unsere [Liefer- und Versandbedingungen](#)

Zuschläge

- Mindermengenzuschlag
- Trockeneiszuschlag
- Gefahrgutzuschlag
- Expressversand

SZABO-SCANDIC HandelsgmbH

Quellenstraße 110, A-1100 Wien

T. +43(0)1 489 3961-0

F. +43(0)1 489 3961-7

mail@szabo-scandic.com

www.szabo-scandic.com

[linkedin.com/company/szaboscandic](https://www.linkedin.com/company/szaboscandic) 

SNAPC2 monoclonal antibody (M01), clone 4B8

Catalog # : H00006618-M01

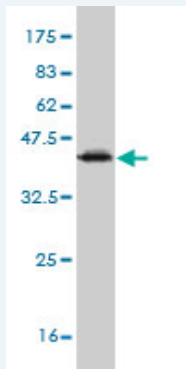
規格 : [100 ug]

[List All](#)

Specification

Product Description:	Mouse monoclonal antibody raised against a partial recombinant SNAPC2.
Immunogen:	SNAPC2 (NP_003074, 16 a.a. ~ 114 a.a) partial recombinant protein with GST tag. MW of the GST tag alone is 26 KDa.
Sequence:	GEVTGPATWSAREKRQLVRLQLQARQQPEPDATLARELRGRSEAEIRVFLQQLKGRVAREAIQKVHPGGLQGPRRREAQPPAPIEVWTDLAEKITGPL
Host:	Mouse
Reactivity:	Human
Isotype:	IgG1 Kappa

Quality Control Testing: Antibody Reactive Against Recombinant Protein.



Western Blot detection against Immunogen (36.63 KDa) .

Storage Buffer: In 1x PBS, pH 7.4

Storage Instruction: Store at -20°C or lower. Aliquot to avoid repeated freezing and thawing.

MSDS: [Download](#)

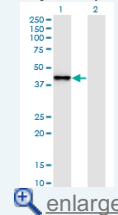
Datasheet: [Download](#)

Applications

Western Blot (Transfected lysate)

Application Image

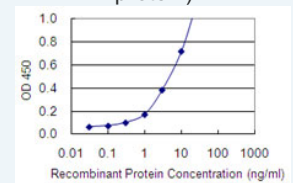
Western Blot (Transfected lysate)



[enlarge](#)

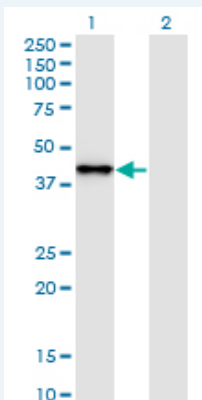
Western Blot (Recombinant protein)

Sandwich ELISA (Recombinant protein)



[enlarge](#)

ELISA



Western Blot analysis of SNAPC2 expression in transfected 293T cell line by SNAPC2 monoclonal antibody (M01), clone 4B8.

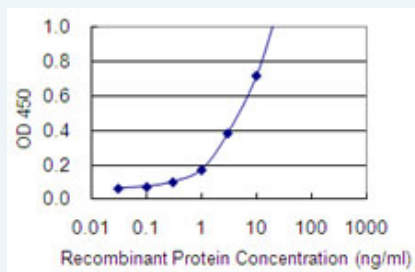
Lane 1: SNAPC2 transfected lysate (Predicted MW: 35.6 KDa).
Lane 2: Non-transfected lysate.

[Protocol Download](#)

Western Blot (Recombinant protein)

[Protocol Download](#)

Sandwich ELISA (Recombinant protein)



Detection limit for recombinant GST tagged SNAPC2 is 0.1 ng/ml as a capture antibody.

[Protocol Download](#)

ELISA

Gene Information

Entrez GeneID: [6618](#)

GeneBank [NM_003083](#)

Accession#:

Protein [NP_003074](#)

Accession#:

Gene Name: SNAPC2

Gene Alias: PTFdelta,SNAP45

Gene Description: small nuclear RNA activating complex, polypeptide 2, 45kDa

Omim ID: [605076](#)

Gene Ontology: [Hyperlink](#)

Other Designations: -

