



# SZABO SCANDIC

Part of Europa Biosite

## Produktinformation



Forschungsprodukte & Biochemikalien



Zellkultur & Verbrauchsmaterial



Diagnostik & molekulare Diagnostik



Laborgeräte & Service

Weitere Information auf den folgenden Seiten!  
See the following pages for more information!



### Lieferung & Zahlungsart

siehe unsere [Liefer- und Versandbedingungen](#)

### Zuschläge

- Mindermengenzuschlag
- Trockeneiszuschlag
- Gefahrgutzuschlag
- Expressversand

### SZABO-SCANDIC HandelsgmbH

Quellenstraße 110, A-1100 Wien

T. +43(0)1 489 3961-0

F. +43(0)1 489 3961-7

[mail@szabo-scandic.com](mailto:mail@szabo-scandic.com)

[www.szabo-scandic.com](http://www.szabo-scandic.com)

[linkedin.com/company/szaboscandic](https://www.linkedin.com/company/szaboscandic) 

## SNCB purified MaxPab mouse polyclonal antibody (B01P) MaxPab®

Catalog # : H00006620-B01P

規格 : [ 50 ug ]

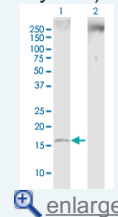
List All

### Specification

<b>Product Description:</b>	Mouse polyclonal antibody raised against a full-length human SNCB protein.
<b>Immunogen:</b>	SNCB (NP_001001502.1, 1 a.a. ~ 134 a.a) full-length human protein.
<b>Sequence:</b>	MDVFMKGLSMAKEGVVAAAEEKTKQGVTEAAEKTKEGVLVVGSKTREGV VQGVASVAEKTKEQASHLGGAVFSGAGNIAAATGLVKREEFPTDLKPEE VAQEAAEEPLIEPLMEPEGESYEDPPQEEYQEYEPEA
<b>Host:</b>	Mouse
<b>Reactivity:</b>	Human
<b>Quality Control Testing:</b>	Antibody reactive against mammalian transfected lysate.
<b>Storage Buffer:</b>	In 1x PBS, pH 7.4
<b>Storage Instruction:</b>	Store at -20°C or lower. Aliquot to avoid repeated freezing and thawing.
<b>MSDS:</b>	<a href="#">Download</a>
<b>Datasheet:</b>	<a href="#">Download</a>

### Application Image

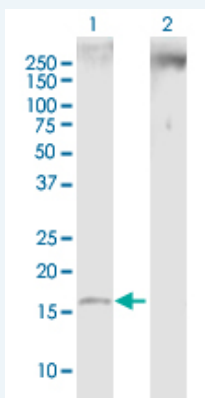
Western Blot (Transfected lysate)



[enlarge](#)

### Applications

#### Western Blot (Transfected lysate)



Western Blot analysis of SNCB expression in transfected 293T cell line ([H00006620-T01](#)) by SNCB MaxPab polyclonal antibody.

Lane 1: SNCB transfected lysate(14.74 KDa).  
Lane 2: Non-transfected lysate.

[Protocol Download](#)

### Gene Information

Entrez GeneID: [6620](#)

**GeneBank** [NM\\_001001502.1](#)  
**Accession#:**

**Protein** [NP\\_001001502.1](#)  
**Accession#:**

**Gene Name:** SNCB

**Gene Alias:** -

**Gene** synuclein, beta  
**Description:**

**Omim ID:** [127750](#), [602569](#)

**Gene Ontology:** [Hyperlink](#)

**Other** beta-synuclein  
**Designations:**

#### **Related Disease**

[Parkinson Disease](#) [Parkinson disease](#)

[服務條款](#) | [隱私權政策](#) | [著作及商標](#) | [網站地圖](#)

©2016 亞諾法生技股份有限公司 Abnova Corporation. 版權所有.