



SZABO SCANDIC

Part of Europa Biosite

Produktinformation



Forschungsprodukte & Biochemikalien



Zellkultur & Verbrauchsmaterial



Diagnostik & molekulare Diagnostik



Laborgeräte & Service

Weitere Information auf den folgenden Seiten!
See the following pages for more information!



Lieferung & Zahlungsart

siehe unsere [Liefer- und Versandbedingungen](#)

Zuschläge

- Mindermengenzuschlag
- Trockeneiszuschlag
- Gefahrgutzuschlag
- Expressversand

SZABO-SCANDIC HandelsgmbH

Quellenstraße 110, A-1100 Wien

T. +43(0)1 489 3961-0

F. +43(0)1 489 3961-7

mail@szabo-scandic.com

www.szabo-scandic.com

[linkedin.com/company/szaboscandic](https://www.linkedin.com/company/szaboscandic) 

SNCA polyclonal antibody (A01)

Catalog # : H00006622-A01

規格 : [50 uL]

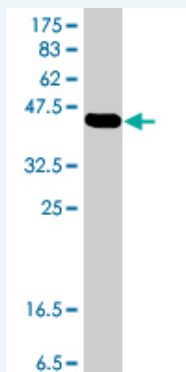
List All

Specification

Product Description:	Mouse polyclonal antibody raised against a full-length recombinant SNCA.
Immunogen:	SNCA (AAH13293.1, 1 a.a. ~ 140 a.a) full-length recombinant protein with GST tag.
Sequence:	MDVFMKGLSKAKEGVAAAEEKTKQGVAAEAGKTKEGVLYVGSKTKEGV VHGVATVAEKTKEQVTNVGGAWTGVTAQAQKTVEGAGSIAAATGFVKK DQLGKNEEGAPQEGILEDMPVDPDNEAYEMPSEEGYQDYEPAA
Host:	Mouse
Reactivity:	Human

Quality Control Antibody Reactive Against Recombinant Protein.

Testing:



Western Blot detection against Immunogen (41.51 kDa) .

Storage Buffer: 50 % glycerol

Storage Instruction: Store at -20°C or lower. Aliquot to avoid repeated freezing and thawing.

MSDS: [Download](#)

Datasheet: [Download](#)

Applications

Western Blot (Recombinant protein)

[Protocol Download](#)

ELISA

Gene Information

Entrez GeneID: [6622](#)

GeneBank Accession#: [BC013293](#)

Protein [AAH13293.1](#)

Accession#:

Gene Name: SNCA

Gene Alias: MGC110988,NACP,PARK1,PARK4,PD1

Gene Description: synuclein, alpha (non A4 component of amyloid precursor)

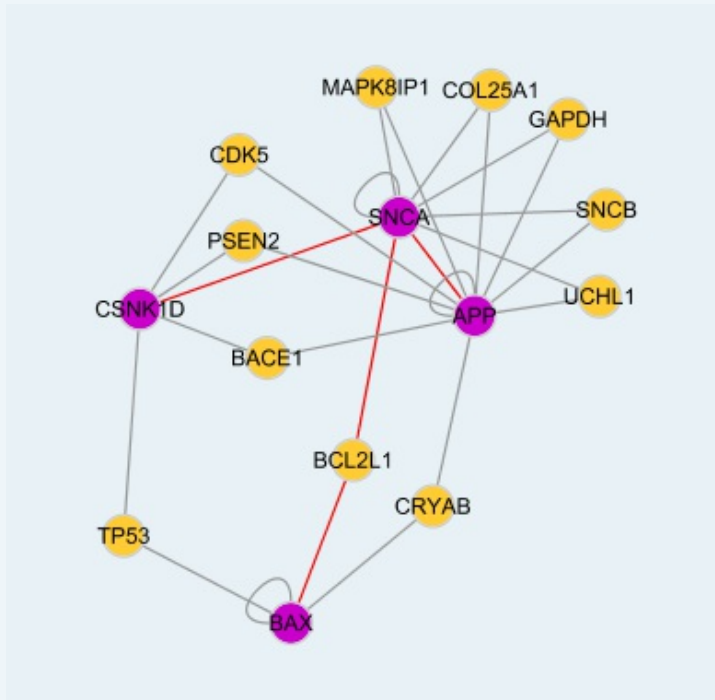
Omim ID: [127750](#), [163890](#), [168601](#), [605543](#)

Gene Ontology: [Hyperlink](#)

Gene Summary: Alpha-synuclein is a member of the synuclein family, which also includes beta- and gamma-synuclein. Synucleins are abundantly expressed in the brain and alpha- and beta-synuclein inhibit phospholipase D2 selectively. SNCA may serve to integrate presynaptic signaling and membrane trafficking. Defects in SNCA have been implicated in the pathogenesis of Parkinson disease. SNCA peptides are a major component of amyloid plaques in the brains of patients with Alzheimer's disease. Four alternatively spliced transcripts encoding two different isoforms have been identified for this gene. [provided by RefSeq]

Other Designations: OTTHUMP00000161559,OTTHUMP00000161561,alpha synuclein,alpha-synuclein, isoform NACP140,non A-beta component of AD amyloid,non A4 component of amyloid

Interactome



Gene Pathway

[Alzheimer's disease](#) [Parkinson's disease](#)

Related Disease

[Alcoholism](#) [Alzheimer Disease](#) [Alzheimer disease](#) [Amphetamine-Related Disorders](#) [Association Learning](#) [Attention](#) [Cardiovascular Diseases](#) [Chromosome Breakage](#) [Cognition Disorders](#) [Color Perception](#) [Cystic Fibrosis](#) [Cystic fibrosis](#) [Dementia](#) [Diabetes Complications](#) [Disease Progression](#) [Disease Susceptibility](#) [Essential Tremor](#) [Essential tremor](#) [Genetic Predisposition to Disease](#)

... see more

[服務條款](#) | [隱私權政策](#) | [著作及商標](#) | [網站地圖](#)

©2016 亞諾法生技股份有限公司 Abnova Corporation. 版權所有.