



# SZABO SCANDIC

Part of Europa Biosite

## Produktinformation



Forschungsprodukte & Biochemikalien



Zellkultur & Verbrauchsmaterial



Diagnostik & molekulare Diagnostik



Laborgeräte & Service

Weitere Information auf den folgenden Seiten!  
See the following pages for more information!



### Lieferung & Zahlungsart

siehe unsere [Liefer- und Versandbedingungen](#)

### Zuschläge

- Mindermengenzuschlag
- Trockeneiszuschlag
- Gefahrgutzuschlag
- Expressversand

### SZABO-SCANDIC HandelsgmbH

Quellenstraße 110, A-1100 Wien

T. +43(0)1 489 3961-0

F. +43(0)1 489 3961-7

[mail@szabo-scandic.com](mailto:mail@szabo-scandic.com)

[www.szabo-scandic.com](http://www.szabo-scandic.com)

[linkedin.com/company/szaboscandic](https://www.linkedin.com/company/szaboscandic) 

## SNCA 293T Cell Transient Overexpression Lysate(Denatured)

Catalog # : H00006622-T02

規格 : [ 100 uL ]

List All

### Specification

**Transfected Cell Line:** 293T

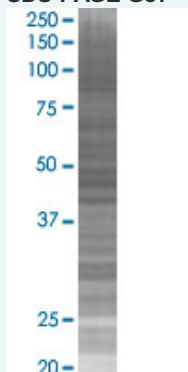
**Plasmid:** pCMV-SNCA full-length

**Host:** Human

**Theoretical MW (kDa):** 14.5

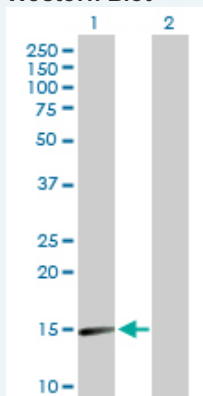
**Quality Control Testing:** Transient overexpression cell lysate was tested with Anti-SNCA antibody (H00006622-D01P) by Western Blots.

#### SDS-PAGE Gel



SNCA transfected lysate.

#### Western Blot



Lane 1: SNCA transfected lysate ( 14.50 KDa)

Lane 2: Non-transfected lysate.

**Storage Buffer:** 1X Sample Buffer (50 mM Tris-HCl, 2% SDS, 10% glycerol, 300 mM 2-mercaptoethanol, 0.01% Bromophenol blue)

**Storage Instruction:** Store at -80°C. Aliquot to avoid repeated freezing and thawing.

**MSDS:**  [Download](#)

### Applications

### Application Image

Western Blot

## Western Blot

### Gene Information

Entrez GeneID: [6622](#)

GeneBank [NM\\_000345](#)  
Accession#:

Protein [NP\\_000336.1](#)  
Accession#:

Gene Name: SNCA

Gene Alias: MGC110988,NACP,PARK1,PARK4,PD1

Gene Description: synuclein, alpha (non A4 component of amyloid precursor)

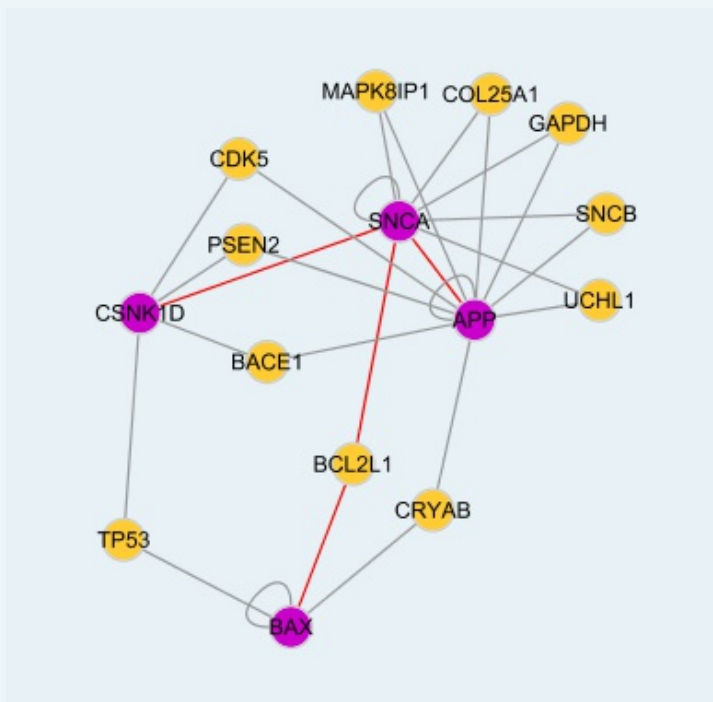
Omim ID: [127750](#), [163890](#), [168601](#), [605543](#)

Gene Ontology: [Hyperlink](#)

**Gene Summary:** Alpha-synuclein is a member of the synuclein family, which also includes beta- and gamma-synuclein. Synucleins are abundantly expressed in the brain and alpha- and beta-synuclein inhibit phospholipase D2 selectively. SNCA may serve to integrate presynaptic signaling and membrane trafficking. Defects in SNCA have been implicated in the pathogenesis of Parkinson disease. SNCA peptides are a major component of amyloid plaques in the brains of patients with Alzheimer's disease. Four alternatively spliced transcripts encoding two different isoforms have been identified for this gene. [provided by RefSeq]

**Other Designations:** OTTHUMP00000161559,OTTHUMP00000161561,alpha synuclein,alpha-synuclein,alpha-synuclein, isoform NACP140,non A-beta component of AD amyloid,non A4 component of amyloid

### Interactome



### Gene Pathway

[Alzheimer's disease](#) [Parkinson's disease](#)

## Related Disease

---

[Alcoholism](#) [Alzheimer Disease](#) [Alzheimer disease](#) [Amphetamine-Related Disorders](#)  
[Association Learning](#) [Attention](#) [Cardiovascular Diseases](#) [Chromosome Breakage](#)  
[Cognition Disorders](#) [Color Perception](#) [Cystic Fibrosis](#) [Cystic fibrosis](#) [Dementia](#)  
[Diabetes Complications](#) [Disease Progression](#) [Disease Susceptibility](#) [Essential Tremor](#)  
[Essential tremor](#) [Genetic Predisposition to Disease](#)

**... see more**

---

[服務條款](#) | [隱私權政策](#) | [著作及商標](#) | [網站地圖](#)

©2016 亞諾法生技股份有限公司 Abnova Corporation. 版權所有.