



# SZABO SCANDIC

Part of Europa Biosite

## Produktinformation



Forschungsprodukte & Biochemikalien



Zellkultur & Verbrauchsmaterial



Diagnostik & molekulare Diagnostik



Laborgeräte & Service

Weitere Information auf den folgenden Seiten!  
See the following pages for more information!



### Lieferung & Zahlungsart

siehe unsere [Liefer- und Versandbedingungen](#)

### Zuschläge

- Mindermengenzuschlag
- Trockeneiszuschlag
- Gefahrgutzuschlag
- Expressversand

### SZABO-SCANDIC HandelsgmbH

Quellenstraße 110, A-1100 Wien

T. +43(0)1 489 3961-0

F. +43(0)1 489 3961-7

[mail@szabo-scandic.com](mailto:mail@szabo-scandic.com)

[www.szabo-scandic.com](http://www.szabo-scandic.com)

[linkedin.com/company/szaboscandic](https://www.linkedin.com/company/szaboscandic) 



## SNCG MaxPab mouse polyclonal antibody (B01) MaxPab®

Catalog # : H00006623-B01

規格 : [ 50 uL ]

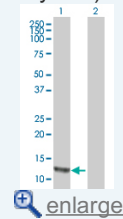
[List All](#)

### Specification

<b>Product Description:</b>	Mouse polyclonal antibody raised against a full-length human SNCG protein.
<b>Immunogen:</b>	SNCG (AAH14098.1, 1 a.a. ~ 127 a.a) full-length human protein.
<b>Sequence:</b>	MDVFKKGFSLIAKEGVVGAVEKTKQGVTEAAEKTKEGVMYVGAKTKENV VQSVTSVAEKTKEQANAVSEAVSSVNTVATKTVEEAENIAVTSGVVRKE DLRPSAPQQEGEASKEKEEVAEEAQSGGD
<b>Host:</b>	Mouse
<b>Reactivity:</b>	Human
<b>Quality Control Testing:</b>	Antibody reactive against mammalian transfected lysate.
<b>Storage Buffer:</b>	No additive
<b>Storage Instruction:</b>	Store at -20°C or lower. Aliquot to avoid repeated freezing and thawing.
<b>Note:</b>	For IHC and IF applications, antibody purification with Protein A will be needed prior to use.
<b>MSDS:</b>	 <a href="#">Download</a>
<b>Datasheet:</b>	 <a href="#">Download</a>

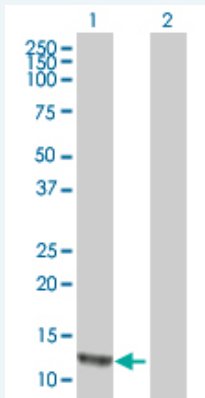
### Application Image

Western Blot (Transfected lysate)




### Applications

#### Western Blot (Transfected lysate)



Western Blot analysis of SNCG expression in transfected 293T cell line ([H00006623-T01](#)) by SNCG MaxPab polyclonal antibody.

Lane 1: SNCG transfected lysate(13.97 KDa).  
Lane 2: Non-transfected lysate.

 [Protocol Download](#)

### Gene Information

**Entrez GeneID:** [6623](#)

**GeneBank  
Accession#:** [BC014098.2](#)

**Protein  
Accession#:** [AAH14098.1](#)

**Gene Name:** SNCG

**Gene Alias:** BCSG1,SR

**Gene  
Description:** synuclein, gamma (breast cancer-specific protein 1)

**Omim ID:** [602998](#)

**Gene Ontology:** [Hyperlink](#)

**Gene Summary:** Summary: This gene encodes a member of the synuclein family of proteins which are believed to be involved in the pathogenesis of neurodegenerative diseases. Mutations in this gene have also been associated with breast tumor development. [provided by RefSeq]

**Other  
Designations:** OTTHUMP00000020013,breast cancer-specific protein  
1,persyn,synoretin,synuclein, gamma (breast cancer-specific gene 1)

#### **Related Disease**

[Alzheimer Disease](#) [Alzheimer disease](#) [Parkinson Disease](#) [Parkinson disease](#)

[服務條款](#) | [隱私權政策](#) | [著作及商標](#) | [網站地圖](#)

©2016 亞諾法生技股份有限公司 Abnova Corporation. 版權所有.