



SZABO SCANDIC

Part of Europa Biosite

Produktinformation



Forschungsprodukte & Biochemikalien



Zellkultur & Verbrauchsmaterial



Diagnostik & molekulare Diagnostik



Laborgeräte & Service

Weitere Information auf den folgenden Seiten!
See the following pages for more information!



Lieferung & Zahlungsart

siehe unsere [Liefer- und Versandbedingungen](#)

Zuschläge

- Mindermengenzuschlag
- Trockeneiszuschlag
- Gefahrgutzuschlag
- Expressversand

SZABO-SCANDIC HandelsgmbH

Quellenstraße 110, A-1100 Wien

T. +43(0)1 489 3961-0

F. +43(0)1 489 3961-7

mail@szabo-scandic.com

www.szabo-scandic.com

[linkedin.com/company/szaboscandic](https://www.linkedin.com/company/szaboscandic) 

SNRPB monoclonal antibody (M01), clone 1B4

Catalog # : H00006628-M01

規格 : [100 ug]

[List All](#)

Specification

Product Description:	Mouse monoclonal antibody raised against a partial recombinant SNRPB.
Immunogen:	SNRPB (NP_003082, 1 a.a. ~ 80 a.a) partial recombinant protein with GST tag. MW of the GST tag alone is 26 KDa.
Sequence:	MTVGKSSKMLQHIDYRMRCILQDGRIFIGTFKAFDKHMNLILCDCDEFKIKPKNSKQAEREKRVLGLVLLRGENLVSM
Host:	Mouse
Reactivity:	Human
Isotype:	IgG1 Kappa
Quality Control Testing:	Antibody Reactive Against Recombinant Protein.
Storage Buffer:	In 1x PBS, pH 7.4

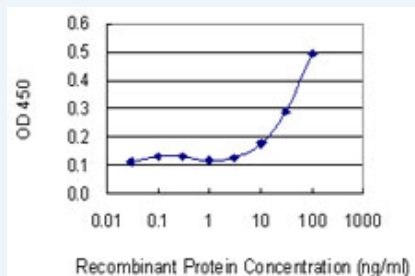
Storage Instruction: Store at -20°C or lower. Aliquot to avoid repeated freezing and thawing.

MSDS: [Download](#)

Datasheet: [Download](#)

Applications

Sandwich ELISA (Recombinant protein)



Detection limit for recombinant GST tagged SNRPB is 3 ng/ml as a capture antibody.

[Protocol Download](#)

ELISA

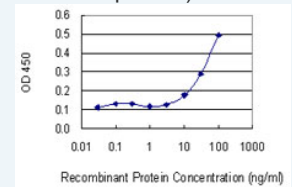
Gene Information

Entrez GeneID: [6628](#)

GeneBank Accession#: [NM_003091](#)

Application Image

Sandwich ELISA (Recombinant protein)



[enlarge](#)

ELISA

Protein [NP_003082](#)

Accession#:

Gene Name: SNRPB

Gene Alias: COD,SNRPB1,SmB/SmB',snRNP-B

Gene Description: small nuclear ribonucleoprotein polypeptides B and B1

Omim ID: [182282](#)

Gene Ontology: [Hyperlink](#)

Gene Summary: The protein encoded by this gene is one of several nuclear proteins that are found in common among U1, U2, U4/U6, and U5 small ribonucleoprotein particles (snRNPs). These snRNPs are involved in pre-mRNA splicing, and the encoded protein may also play a role in pre-mRNA splicing or snRNP structure. Autoantibodies from patients with systemic lupus erythematosus frequently recognize epitopes on the encoded protein. Two transcript variants encoding different isoforms (B and B') have been found for this gene. [provided by RefSeq]

Other Designations: B polypeptide of Sm protein,OTTHUMP00000030012,OTTHUMP00000030013,Sm protein B/B',small nuclear ribonucleoprotein polypeptide B,small nuclear ribonucleoprotein polypeptide B/B',small nuclear ribonucleoprotein polypeptides B and B'

Gene Pathway

[Systemic lupus erythematosus](#)

Related Disease

[Breast Neoplasms Carcinoma Genetic Predisposition to Disease](#)

[服務條款](#) | [隱私權政策](#) | [著作及商標](#) | [網站地圖](#)

©2016 亞諾法生技股份有限公司 Abnova Corporation. 版權所有.