



SZABO SCANDIC

Part of Europa Biosite

Produktinformation



Forschungsprodukte & Biochemikalien



Zellkultur & Verbrauchsmaterial



Diagnostik & molekulare Diagnostik



Laborgeräte & Service

Weitere Information auf den folgenden Seiten!
See the following pages for more information!



Lieferung & Zahlungsart

siehe unsere [Liefer- und Versandbedingungen](#)

Zuschläge

- Mindermengenzuschlag
- Trockeneiszuschlag
- Gefahrgutzuschlag
- Expressversand

SZABO-SCANDIC HandelsgmbH

Quellenstraße 110, A-1100 Wien

T. +43(0)1 489 3961-0

F. +43(0)1 489 3961-7

mail@szabo-scandic.com

www.szabo-scandic.com

[linkedin.com/company/szaboscandic](https://www.linkedin.com/company/szaboscandic) 

SNTB2 MaxPab mouse polyclonal antibody (B01) MaxPab®

Catalog # : H00006645-B01

規格 : [50 uL]

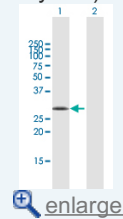
[List All](#)

Specification

Product Description:	Mouse polyclonal antibody raised against a full-length human SNTB2 protein.
Immunogen:	SNTB2 (ENSP00000353686, 1 a.a. ~ 267 a.a) full-length human protein.
Sequence:	MRVAAATAAAGAGPAMAVWTRATKAGLVELLLRERWVRVVAELSGESL SLTGDAAAAEELEPALGPAAAFNGLPNGGGAGDSLPGSPSRGLGPPSP PAPPRGPAGEAGASPPVRRVRVVKQEAGGLGISIKGGRENRMPIISKIFP GLAADQSRALRLGDAILSNGTDLRQATHDQAVQALKRAGKEVLLLEVKFI REVTPIYIKKPSLVSDLPWEGAAPQSPSFGSEDSGSPKHQNSTKDRKIIP LKMCF AARNLSMPDLENRQN
Host:	Mouse
Reactivity:	Human
Quality Control Testing:	Antibody reactive against mammalian transfected lysate.
Storage Buffer:	No additive
Storage Instruction:	Store at -20°C or lower. Aliquot to avoid repeated freezing and thawing.
Note:	For IHC and IF applications, antibody purification with Protein A will be needed prior to use.
MSDS:	Download
Datasheet:	Download

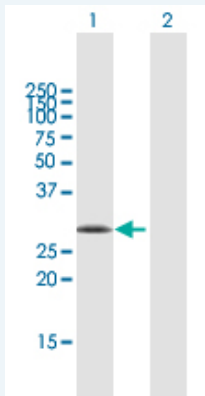
Application Image

Western Blot (Transfected lysate)



Applications

Western Blot (Transfected lysate)



Western Blot analysis of SNTB2 expression in transfected 293T cell line ([H00006645-T01](#)) by SNTB2 MaxPab polyclonal antibody.

Lane 1: SNTB2 transfected lysate(29.37 KDa).

Lane 2: Non-transfected lysate.

Gene Information

Entrez GeneID: [6645](#)

GeneBank Accession#: [ENST00000360496](#)

Protein Accession#: [ENSP00000353686](#)

Gene Name: [SNTB2](#)

Gene Alias: [D16S2531E,EST25263,SNT2B2,SNT3,SNTL](#)

Gene Description: syntrophin, beta 2 (dystrophin-associated protein A1, 59kDa, basic component 2)

Omim ID: [600027](#)

Gene Ontology: [Hyperlink](#)

Gene Summary: Dystrophin is a large, rod-like cytoskeletal protein found at the inner surface of muscle fibers. Dystrophin is missing in Duchenne Muscular Dystrophy patients and is present in reduced amounts in Becker Muscular Dystrophy patients. The protein encoded by this gene is a peripheral membrane protein found associated with dystrophin and dystrophin-related proteins. This gene is a member of the syntrophin gene family, which contains at least two other structurally-related genes. [provided by RefSeq]

Other Designations: basic beta 2 syntrophin,dystrophin-associated protein A1, 59kD, basic component 2,syntrophin, beta 2 (dystrophin-associated protein A1, 59kD, basic component 2),syntrophin-like