



SZABO SCANDIC

Part of Europa Biosite

Produktinformation



Forschungsprodukte & Biochemikalien



Zellkultur & Verbrauchsmaterial



Diagnostik & molekulare Diagnostik



Laborgeräte & Service

Weitere Information auf den folgenden Seiten!
See the following pages for more information!



Lieferung & Zahlungsart

siehe unsere [Liefer- und Versandbedingungen](#)

Zuschläge

- Mindermengenzuschlag
- Trockeneiszuschlag
- Gefahrgutzuschlag
- Expressversand

SZABO-SCANDIC HandelsgmbH

Quellenstraße 110, A-1100 Wien

T. +43(0)1 489 3961-0

F. +43(0)1 489 3961-7

mail@szabo-scandic.com

www.szabo-scandic.com

[linkedin.com/company/szaboscandic](https://www.linkedin.com/company/szaboscandic) 

SNTB2 monoclonal antibody (M01), clone 3F12

Catalog # : H00006645-M01

規格 : [100 ug]

[List All](#)

Specification

Product Description:	Mouse monoclonal antibody raised against a partial recombinant SNTB2.
Immunogen:	SNTB2 (NP_006741.1, 116 a.a. ~ 210 a.a) partial recombinant protein with GST tag. MW of the GST tag alone is 26 KDa.
Sequence:	VRVWKQEAGGLGISIKGGRENRMPIISKIFPGLAADQSRALRLGDAILSVN GTDLRQATHDQAVQALKRAGKEVLLEVKFIREVTPYIKKPSLV
Host:	Mouse
Reactivity:	Human
Isotype:	IgG2a Kappa
Quality Control Testing:	Antibody Reactive Against Recombinant Protein.
Storage Buffer:	In 1x PBS, pH 7.4

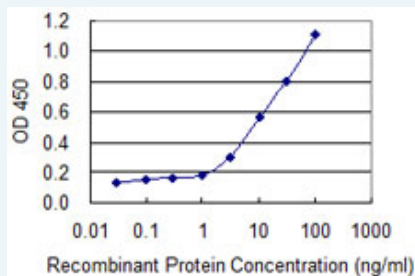
Storage Instruction: Store at -20°C or lower. Aliquot to avoid repeated freezing and thawing.

MSDS: [Download](#)

Datasheet: [Download](#)

Applications

Sandwich ELISA (Recombinant protein)



Detection limit for recombinant GST tagged SNTB2 is 0.3 ng/ml as a capture antibody.

[Protocol Download](#)

ELISA

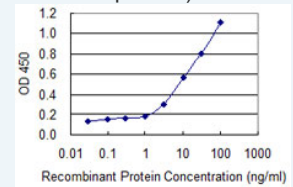
Gene Information

Entrez GeneID: [6645](#)

GeneBank Accession#: [NM_006750](#)

Application Image

Sandwich ELISA (Recombinant protein)



[enlarge](#)

ELISA

Protein [NP_006741.1](#)

Accession#:

Gene Name: [SNTB2](#)

Gene Alias: [D16S2531E,EST25263,SNT2B2,SNT3,SNTL](#)

Gene Description: syntrophin, beta 2 (dystrophin-associated protein A1, 59kDa, basic component 2)

Omim ID: [600027](#)

Gene Ontology: [Hyperlink](#)

Gene Summary: Dystrophin is a large, rod-like cytoskeletal protein found at the inner surface of muscle fibers. Dystrophin is missing in Duchenne Muscular Dystrophy patients and is present in reduced amounts in Becker Muscular Dystrophy patients. The protein encoded by this gene is a peripheral membrane protein found associated with dystrophin and dystrophin-related proteins. This gene is a member of the syntrophin gene family, which contains at least two other structurally-related genes. [provided by RefSeq]

Other Designations: basic beta 2 syntrophin,dystrophin-associated protein A1, 59kD, basic component 2,syntrophin, beta 2 (dystrophin-associated protein A1, 59kD, basic component 2),syntrophin-like

[服務條款](#) | [隱私權政策](#) | [著作及商標](#) | [網站地圖](#)

©2016 亞諾法生技股份有限公司 Abnova Corporation. 版權所有.