



SZABO SCANDIC

Part of Europa Biosite

Produktinformation



Forschungsprodukte & Biochemikalien



Zellkultur & Verbrauchsmaterial



Diagnostik & molekulare Diagnostik



Laborgeräte & Service

Weitere Information auf den folgenden Seiten!
See the following pages for more information!



Lieferung & Zahlungsart

siehe unsere [Liefer- und Versandbedingungen](#)

Zuschläge

- Mindermengenzuschlag
- Trockeneiszuschlag
- Gefahrgutzuschlag
- Expressversand

SZABO-SCANDIC HandelsgmbH

Quellenstraße 110, A-1100 Wien

T. +43(0)1 489 3961-0

F. +43(0)1 489 3961-7

mail@szabo-scandic.com

www.szabo-scandic.com

[linkedin.com/company/szaboscandic](https://www.linkedin.com/company/szaboscandic) 

SNTB2 293T Cell Transient Overexpression Lysate(Denatured)

Catalog # : H00006645-T01

規格 : [100 uL]

List All

Specification

Transfected Cell Line: 293T

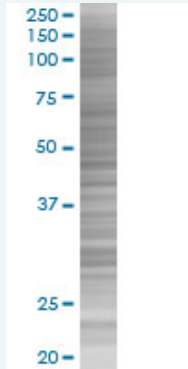
Plasmid: pCMV-SNTB2 full-length

Host: Human

Theoretical MW (kDa): 29.48

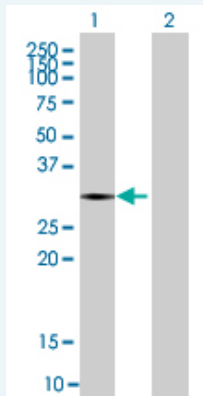
Quality Control Testing: Transient overexpression cell lysate was tested with Anti-SNTB2 antibody (H00006645-B01) by Western Blots.

SDS-PAGE Gel



SNTB2 transfected lysate.

Western Blot



Lane 1: SNTB2 transfected lysate (29.48 KDa)

Lane 2: Non-transfected lysate.

Storage Buffer: 1X Sample Buffer (50 mM Tris-HCl, 2% SDS, 10% glycerol, 300 mM 2-mercaptoethanol, 0.01% Bromophenol blue)

Storage Instruction: Store at -80°C. Aliquot to avoid repeated freezing and thawing.

MSDS:  [Download](#)

Applications

Western Blot

Gene Information

Entrez GeneID: [6645](#)

GeneBank Accession#: [ENST00000360496](#)

Protein Accession#: =

Gene Name: [SNTB2](#)

Gene Alias: [D16S2531E](#),[EST25263](#),[SNT2B2](#),[SNT3](#),[SNTL](#)

Gene Description: syntrophin, beta 2 (dystrophin-associated protein A1, 59kDa, basic component 2)

Omim ID: [600027](#)

Gene Ontology: [Hyperlink](#)

Gene Summary: Dystrophin is a large, rod-like cytoskeletal protein found at the inner surface of muscle fibers. Dystrophin is missing in Duchenne Muscular Dystrophy patients and is present in reduced amounts in Becker Muscular Dystrophy patients. The protein encoded by this gene is a peripheral membrane protein found associated with dystrophin and dystrophin-related proteins. This gene is a member of the syntrophin gene family, which contains at least two other structurally-related genes. [provided by RefSeq]

Other Designations: basic beta 2 syntrophin,dystrophin-associated protein A1, 59kD, basic component 2,syntrophin, beta 2 (dystrophin-associated protein A1, 59kD, basic component 2),syntrophin-like