



SZABO SCANDIC

Part of Europa Biosite

Produktinformation



Forschungsprodukte & Biochemikalien



Zellkultur & Verbrauchsmaterial



Diagnostik & molekulare Diagnostik



Laborgeräte & Service

Weitere Information auf den folgenden Seiten!
See the following pages for more information!



Lieferung & Zahlungsart

siehe unsere [Liefer- und Versandbedingungen](#)

Zuschläge

- Mindermengenzuschlag
- Trockeneiszuschlag
- Gefahrgutzuschlag
- Expressversand

SZABO-SCANDIC HandelsgmbH

Quellenstraße 110, A-1100 Wien

T. +43(0)1 489 3961-0

F. +43(0)1 489 3961-7

mail@szabo-scandic.com

www.szabo-scandic.com

[linkedin.com/company/szaboscandic](https://www.linkedin.com/company/szaboscandic) 

SOD1 monoclonal antibody (M04), clone 10D5

Catalog # : H00006647-M04

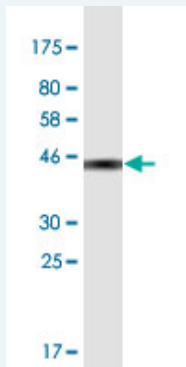
規格 : [100 ug]

[List All](#)

Specification

| | |
|-----------------------------|---|
| Product Description: | Mouse monoclonal antibody raised against a full-length recombinant SOD1. |
| Immunogen: | SOD1 (AAH01034, 1 a.a. ~ 154 a.a) full-length recombinant protein with GST tag. MW of the GST tag alone is 26 KDa. |
| Sequence: | MATKAVCVLKGDGPVQGIINFEQKESNGPVKVGSIKGLTEGLHGFHVH EFGDNTAGCTSAGPHFNPLSRKHGGPKDEERHVGDLGNVTADKDGVA DVSIEDSVISLSGDHCITGRTLWVHEKADDLGKGGNEESTKTGNAGSRLA CGVIGIAQ |
| Host: | Mouse |
| Reactivity: | Human |
| Isotype: | IgG2a Kappa |

Quality Control Testing: Antibody Reactive Against Recombinant Protein.



Western Blot detection against Immunogen (42.68 KDa) .

Storage Buffer: In 1x PBS, pH 7.4

Storage Instruction: Store at -20°C or lower. Aliquot to avoid repeated freezing and thawing.

MSDS: [Download](#)

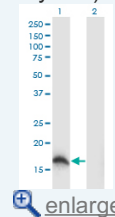
Datasheet: [Download](#)

Applications

Western Blot (Transfected lysate)

Application Image

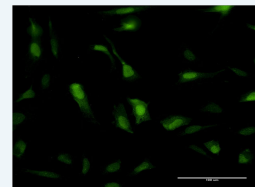
Western Blot (Transfected lysate)



[enlarge](#)

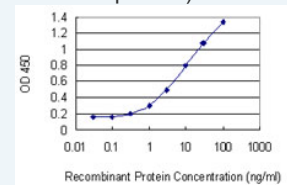
Western Blot (Recombinant protein)

Immunofluorescence



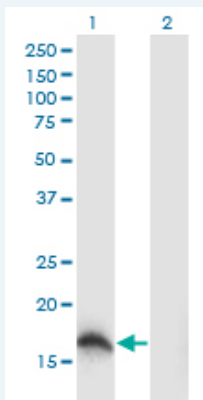
[enlarge](#)

Sandwich ELISA (Recombinant protein)



[enlarge](#)

ELISA



Western Blot analysis of SOD1 expression in transfected 293T cell line by SOD1 monoclonal antibody (M04), clone 10D5.

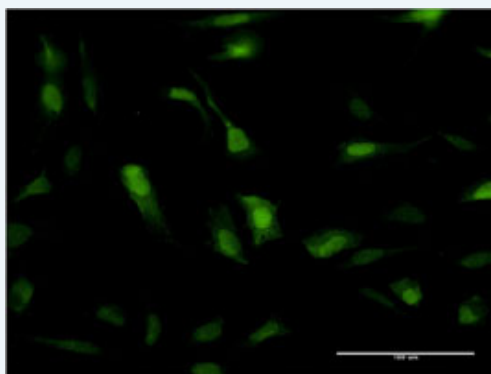
Lane 1: SOD1 transfected lysate (Predicted MW: 15.9 kDa).
Lane 2: Non-transfected lysate.

[Protocol Download](#)

Western Blot (Recombinant protein)

[Protocol Download](#)

Immunofluorescence

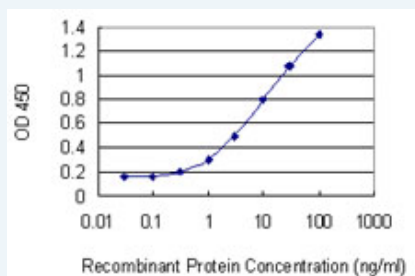


[enlarge this image](#)

Immunofluorescence of monoclonal antibody to SOD1 on HeLa cell . [antibody concentration 10 ug/ml]

[Protocol Download](#)

Sandwich ELISA (Recombinant protein)



Detection limit for recombinant GST tagged SOD1 is 0.1 ng/ml as a capture antibody.

[Protocol Download](#)

ELISA

Gene Information

Entrez GeneID: [6647](#)

GeneBank [BC001034](#)

Accession#:

Protein [AAH01034](#)

Accession#:

Gene Name: SOD1

Gene Alias: ALS,ALS1,IPOA,SOD,homodimer

Gene Description: superoxide dismutase 1, soluble

Omim ID: [105400](#), [147450](#)

Gene Ontology: [Hyperlink](#)

Gene Summary: The protein encoded by this gene binds copper and zinc ions and is one of two isozymes responsible for destroying free superoxide radicals in the body. The encoded isozyme is a soluble cytoplasmic protein, acting as a homodimer to convert naturally-occurring but harmful superoxide radicals to molecular oxygen and hydrogen peroxide. The other isozyme is a mitochondrial protein. Mutations in this gene have been implicated as causes of familial amyotrophic lateral sclerosis. Rare transcript variants have been reported for this gene. [provided by RefSeq]

Other Designations: Cu /Zn superoxide dismutase,Cu/Zn superoxide dismutase,SOD, soluble,indophenoxidase A,superoxide dismutase, cystolic

Gene Pathway

[Amyotrophic lateral sclerosis \(ALS\)](#) [Huntington's disease](#) [Prion diseases](#)

Related Disease

[Acute Disease](#) [Albuminuria](#) [Alzheimer Disease](#) [Alzheimer disease](#)
[Amyotrophic Lateral Sclerosis](#) [Amyotrophic lateral sclerosis](#) [Auditory Threshold](#)
[Barrett Esophagus](#) [Birth Weight](#) [Brain Neoplasms](#) [Breast cancer](#) [Breast Neoplasms](#)
[Carcinoma, Ductal, Breast](#) [Carcinoma, Lobular](#) [Cardiovascular Diseases](#) [Chronic Disease](#)
[Cognition](#) [Cognition Disorders](#) [Coronary Artery Disease](#)

... see more