



# SZABO SCANDIC

Part of Europa Biosite

## Produktinformation



Forschungsprodukte & Biochemikalien



Zellkultur & Verbrauchsmaterial



Diagnostik & molekulare Diagnostik



Laborgeräte & Service

Weitere Information auf den folgenden Seiten!  
See the following pages for more information!



### Lieferung & Zahlungsart

siehe unsere [Liefer- und Versandbedingungen](#)

### Zuschläge

- Mindermengenzuschlag
- Trockeneiszuschlag
- Gefahrgutzuschlag
- Expressversand

### SZABO-SCANDIC HandelsgmbH

Quellenstraße 110, A-1100 Wien

T. +43(0)1 489 3961-0

F. +43(0)1 489 3961-7

[mail@szabo-scandic.com](mailto:mail@szabo-scandic.com)

[www.szabo-scandic.com](http://www.szabo-scandic.com)

[linkedin.com/company/szaboscandic](https://www.linkedin.com/company/szaboscandic) 

## SOD3 monoclonal antibody (M01), clone 5C3

Catalog # : H00006649-M01

規格 : [ 100 ug ]

[List All](#)

### Specification

**Product Description:** Mouse monoclonal antibody raised against a partial recombinant SOD3.

**Immunogen:** SOD3 (AAH14418, 26 a.a. ~ 125 a.a) partial recombinant protein with GST tag. MW of the GST tag alone is 26 KDa.

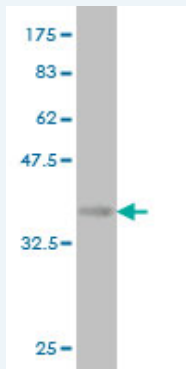
**Sequence:** EPNSDSAEWIRDMYAKVTEIWQEVMQRRDDGTLHAACQVQPSATLDA  
AQPRVTGWLFRQLAPRAKLDAFFALEGFPTENSSSRAIHVHQFGDLS  
QGC

**Host:** Mouse

**Reactivity:** Human

**Isotype:** IgG2a Kappa

**Quality Control Testing:** Antibody Reactive Against Recombinant Protein.



Western Blot detection against Immunogen (36.41 KDa) .

**Storage Buffer:** In 1x PBS, pH 7.4

**Storage Instruction:** Store at -20°C or lower. Aliquot to avoid repeated freezing and thawing.

**MSDS:** [Download](#)

**Datasheet:** [Download](#)

### Applications

**Western Blot (Recombinant protein)**

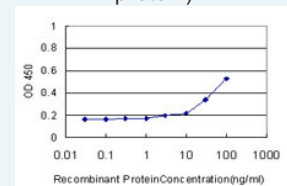
[Protocol Download](#)

**Sandwich ELISA (Recombinant protein)**

### Application Image

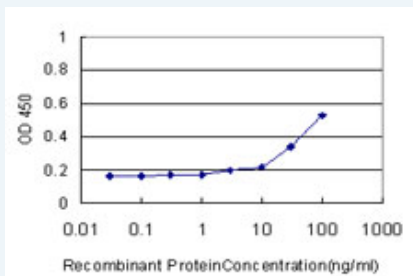
Western Blot (Recombinant protein)

Sandwich ELISA (Recombinant protein)



[enlarge](#)

ELISA



Detection limit for recombinant GST tagged SOD3 is approximately 10ng/ml as a capture antibody.

 [Protocol Download](#)

## ELISA

### Gene Information

**Entrez GeneID:** [6649](#)

**GeneBank** [BC014418](#)

**Accession#:**

**Protein** [AAH14418](#)

**Accession#:**

**Gene Name:** SOD3

**Gene Alias:** EC-SOD,MGC20077

**Gene Description:** superoxide dismutase 3, extracellular

**Omim ID:** [185490](#)

**Gene Ontology:** [Hyperlink](#)

**Gene Summary:** This gene encodes a member of the superoxide dismutase (SOD) protein family. SODs are antioxidant enzymes that catalyze the dismutation of two superoxide radicals into hydrogen peroxide and oxygen. The product of this gene is thought to protect the brain, lungs, and other tissues from oxidative stress. The protein is secreted into the extracellular space and forms a glycosylated homotetramer that is anchored to the extracellular matrix (ECM) and cell surfaces through an interaction with heparan sulfate proteoglycan and collagen. A fraction of the protein is cleaved near the C-terminus before secretion to generate circulating tetramers that do not interact with the ECM. [provided by RefSeq]

**Other Designations:** OTTHUMP00000158715

### Related Disease

[Acute Lung Injury](#) [Alzheimer Disease](#) [Alzheimer disease](#) [Arthritis, Rheumatoid](#) [Asbestosis](#) [Atherosclerosis](#) [Atherosclerosis](#) [Behcet Syndrome](#) [Birth Weight](#) [Brain Neoplasms](#) [Bronchial Hyperreactivity](#) [Calcinosis](#) [Cardiovascular Diseases](#) [Cerebral Infarction](#) [Chorioamnionitis](#) [Cognition](#) [Coronary Artery Disease](#) [Diabetes Mellitus](#) [Diabetes Mellitus, Type 1](#)

... see more

