



SZABO SCANDIC

Part of Europa Biosite

Produktinformation



Forschungsprodukte & Biochemikalien



Zellkultur & Verbrauchsmaterial



Diagnostik & molekulare Diagnostik



Laborgeräte & Service

Weitere Information auf den folgenden Seiten!
See the following pages for more information!



Lieferung & Zahlungsart

siehe unsere [Liefer- und Versandbedingungen](#)

Zuschläge

- Mindermengenzuschlag
- Trockeneiszuschlag
- Gefahrgutzuschlag
- Expressversand

SZABO-SCANDIC HandelsgmbH

Quellenstraße 110, A-1100 Wien

T. +43(0)1 489 3961-0

F. +43(0)1 489 3961-7

mail@szabo-scandic.com

www.szabo-scandic.com

[linkedin.com/company/szaboscandic](https://www.linkedin.com/company/szaboscandic) 

SOLH monoclonal antibody (M05), clone 4E2

Catalog # : H00006650-M05

規格 : [100 ug]

[List All](#)

Specification

Product Description: Mouse monoclonal antibody raised against a partial recombinant SOLH.

Immunogen: SOLH (NP_005623, 993 a.a. ~ 1086 a.a) partial recombinant protein with GST tag. MW of the GST tag alone is 26 KDa.

Sequence: HPKAYLHVQCDCDCTDSFNWVSTRGSLRTQDSVPPLHRQVLVLSQLEGNA
GFSITHRLAHRKAAQAF LSDWTASKGTHSPPLTPEVAGLHGPRPL

Host: Mouse

Reactivity: Human

Isotype: IgG2a Kappa

Quality Control Testing: Antibody Reactive Against Recombinant Protein.

Storage Buffer: In 1x PBS, pH 7.4

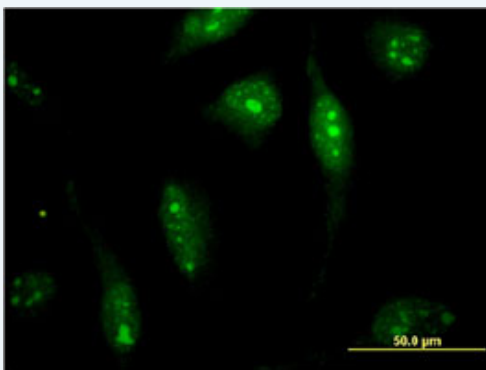
Storage Instruction: Store at -20°C or lower. Aliquot to avoid repeated freezing and thawing.

MSDS: [Download](#)

Datasheet: [Download](#)

Applications

Immunofluorescence



[enlarge this image](#)

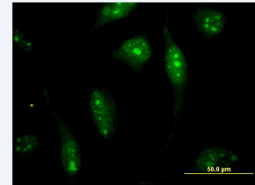
Immunofluorescence of monoclonal antibody to SOLH on HeLa cell . [antibody concentration 10 ug/ml]

[Protocol Download](#)

Sandwich ELISA (Recombinant protein)

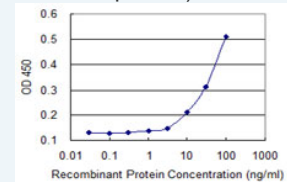
Application Image

Immunofluorescence



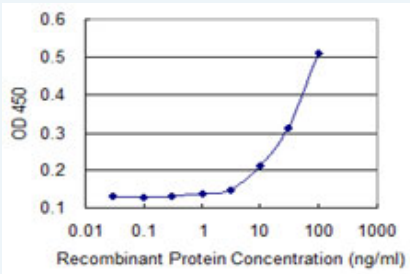
[enlarge](#)

Sandwich ELISA (Recombinant protein)




[enlarge](#)

ELISA



Detection limit for recombinant GST tagged SOLH is 3 ng/ml as a capture antibody.

 [Protocol Download](#)

ELISA

Gene Information

Entrez GeneID: [6650](#)

GeneBank [NM_005632](#)

Accession#:

Protein [NP_005623](#)

Accession#:

Gene Name: SOLH

Gene Alias: CAPN15,MGC131491

Gene Description: small optic lobes homolog (Drosophila)

Description:

Omim ID: [603267](#)

Gene Ontology: [Hyperlink](#)

Gene Summary: This gene encodes a protein containing zinc-finger-like repeats and a calpain-like protease domain. The encoded protein may function as a transcription factor, RNA-binding protein, or in protein-protein interactions during visual system development. [provided by RefSeq]

Other Designations: small optic lobes

Designations:

[服務條款](#) | [隱私權政策](#) | [著作及商標](#) | [網站地圖](#)

©2016 亞諾法生技股份有限公司 Abnova Corporation. 版權所有.