



SZABO SCANDIC

Part of Europa Biosite

Produktinformation



Forschungsprodukte & Biochemikalien



Zellkultur & Verbrauchsmaterial



Diagnostik & molekulare Diagnostik



Laborgeräte & Service

Weitere Information auf den folgenden Seiten!
See the following pages for more information!



Lieferung & Zahlungsart

siehe unsere [Liefer- und Versandbedingungen](#)

Zuschläge

- Mindermengenzuschlag
- Trockeneiszuschlag
- Gefahrgutzuschlag
- Expressversand

SZABO-SCANDIC HandelsgmbH

Quellenstraße 110, A-1100 Wien

T. +43(0)1 489 3961-0

F. +43(0)1 489 3961-7

mail@szabo-scandic.com

www.szabo-scandic.com

[linkedin.com/company/szaboscandic](https://www.linkedin.com/company/szaboscandic) 

SORD polyclonal antibody (A01)

Catalog # : H00006652-A01

規格 : [50 uL]

List All

Specification

Product Description: Mouse polyclonal antibody raised against a partial recombinant SORD.

Description:

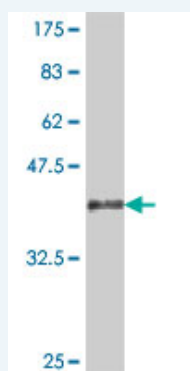
Immunogen: SORD (NP_003095, 1 a.a. ~ 110 a.a) partial recombinant protein with GST tag.

Sequence: MAAAAKPNNLSLVHGPDLRLENYPIPEPGPNEVLLRMHSVGICGSDVH
YWEYGRIGNFIVKKPMVLGHEASGTVEKVGSSVKHLKPGDRVAIEPGAPR
ENDEFCKMGR

Host: Mouse

Reactivity: Human

Quality Control Testing: Antibody Reactive Against Recombinant Protein.



Western Blot detection against Immunogen (38.21 kDa) .

Storage Buffer: 50 % glycerol

Storage Instruction: Store at -20°C or lower. Aliquot to avoid repeated freezing and thawing.

MSDS:  [Download](#)

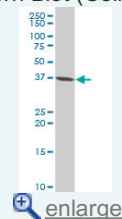
Datasheet:  [Download](#)

Applications

Western Blot (Cell lysate)

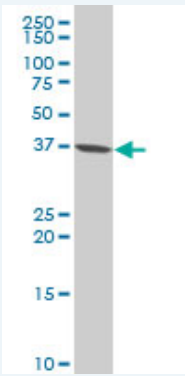
Application Image

Western Blot (Cell lysate)



Western Blot (Recombinant protein)

ELISA



SORD polyclonal antibody (A01), Lot # 051123JC01 Western Blot analysis of SORD expression in HL-60 (Cat # L014V1).

 [Protocol Download](#)

Western Blot (Recombinant protein)

 [Protocol Download](#)

ELISA

Gene Information

Entrez GeneID: [6652](#)

GeneBank Accession#: [NM_003104](#)

Protein Accession#: [NP_003095](#)

Gene Name: SORD

Gene Alias: SORD1

Gene Description: sorbitol dehydrogenase

Omim ID: [182500](#)

Gene Ontology: [Hyperlink](#)

Other Designations: -

Gene Pathway

[Fructose and mannose metabolism](#) [Metabolic pathways](#)

Related Disease

[Genetic Predisposition to Disease](#) [Ovarian Neoplasms](#)