



SZABO SCANDIC

Part of Europa Biosite

Produktinformation



Forschungsprodukte & Biochemikalien



Zellkultur & Verbrauchsmaterial



Diagnostik & molekulare Diagnostik



Laborgeräte & Service

Weitere Information auf den folgenden Seiten!
See the following pages for more information!



Lieferung & Zahlungsart

siehe unsere [Liefer- und Versandbedingungen](#)

Zuschläge

- Mindermengenzuschlag
- Trockeneiszuschlag
- Gefahrgutzuschlag
- Expressversand

SZABO-SCANDIC HandelsgmbH

Quellenstraße 110, A-1100 Wien

T. +43(0)1 489 3961-0

F. +43(0)1 489 3961-7

mail@szabo-scandic.com

www.szabo-scandic.com

[linkedin.com/company/szaboscandic](https://www.linkedin.com/company/szaboscandic) 

SORD purified MaxPab rabbit polyclonal antibody (D01P) MaxPab®

Catalog # : H00006652-D01P

規格 : [100 ug]

List All

Specification

Product Description: Rabbit polyclonal antibody raised against a full-length human SORD protein.

Immunogen: SORD (NP_003095.1, 1 a.a. ~ 357 a.a) full-length human protein.

Sequence:
 MAAAAPNNLSLVVHGPGDLRLNYPEPGPNEVLLRMHSVGICGSDVH
 YWEYGRIGNFIVKKPMVLGHEASGTVEKVGSSVKHLKPGDRVAIEPGAPR
 ENDEFCKMGRYNLSPSIFFCATPPDDGNLCRFYKHNAAFCYKLPDMVTF
 EEGALIEPLSVGIHACRRGGVTLGHKVLVCGAGPIGMVTLVAKAMGAAQ
 VVTDLSATRLSKAKEIGADLVLQISKESPQEIARKVEGQLGCKPEVTIEC
 TGAEASIQAGIYATRSGGTLVLVGLGSEMTTVPLLHAAIREVDIKGVFRYC
 NTWPVAISMLASKSVNVKPLVTHRFPLEKALEAFETFKKGLGLKIMLKCD
 PSDQNP

Host: Rabbit

Reactivity: Human

Quality Control Testing: Antibody reactive against mammalian transfected lysate.

Storage Buffer: In 1x PBS, pH 7.4

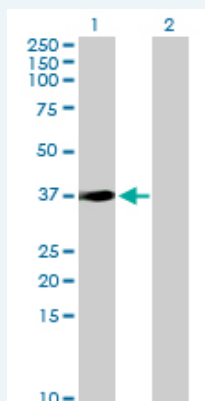
Storage Instruction: Store at -20°C or lower. Aliquot to avoid repeated freezing and thawing.

MSDS:  [Download](#)

Datasheet:  [Download](#)

Applications

Western Blot (Transfected lysate)



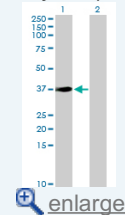
Western Blot analysis of SORD expression in transfected 293T cell line ([H00006652-T01](#)) by SORD MaxPab polyclonal antibody.


Lane 1: SORD transfected lysate(38.30 KDa).

Lane 2: Non-transfected lysate.

Application Image

Western Blot (Transfected lysate)



 enlarge

 [Protocol Download](#)

Gene Information

Entrez GeneID: [6652](#)

GeneBank Accession#: [NM_003104.3](#)

Protein Accession#: [NP_003095.1](#)

Gene Name: SORD

Gene Alias: SORD1

Gene Description: sorbitol dehydrogenase

Omim ID: [182500](#)

Gene Ontology: [Hyperlink](#)

Other Designations: -

Gene Pathway

[Fructose and mannose metabolism](#) [Metabolic pathways](#)

Related Disease

[Genetic Predisposition to Disease](#) [Ovarian Neoplasms](#)

[服務條款](#) | [隱私權政策](#) | [著作及商標](#) | [網站地圖](#)

©2016 亞諾法生技股份有限公司 Abnova Corporation. 版權所有.