



SZABO SCANDIC

Part of Europa Biosite

Produktinformation



Forschungsprodukte & Biochemikalien



Zellkultur & Verbrauchsmaterial



Diagnostik & molekulare Diagnostik



Laborgeräte & Service

Weitere Information auf den folgenden Seiten!
See the following pages for more information!



Lieferung & Zahlungsart

siehe unsere [Liefer- und Versandbedingungen](#)

Zuschläge

- Mindermengenzuschlag
- Trockeneiszuschlag
- Gefahrgutzuschlag
- Expressversand

SZABO-SCANDIC HandelsgmbH

Quellenstraße 110, A-1100 Wien

T. +43(0)1 489 3961-0

F. +43(0)1 489 3961-7

mail@szabo-scandic.com

www.szabo-scandic.com

[linkedin.com/company/szaboscandic](https://www.linkedin.com/company/szaboscandic) 

SORD monoclonal antibody (M02), clone 2B8

Catalog # : H00006652-M02

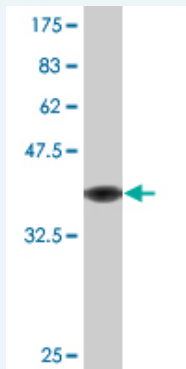
規格 : [100 ug]

[List All](#)

Specification

Product Description:	Mouse monoclonal antibody raised against a partial recombinant SORD.
Immunogen:	SORD (NP_003095, 1 a.a. ~ 110 a.a) partial recombinant protein with GST tag. MW of the GST tag alone is 26 KDa.
Sequence:	MAAAKPNNLSLVHGPDLRLENYPIPEPGPNEVLLRMHSVGICGSDVH YWEYGRIGNFIVKKPMVLGHEASGTVEKVGSSVKHLKPGDRVAIEPGAPR ENDEFCKMGR
Host:	Mouse
Reactivity:	Human
Isotype:	IgG1 Kappa

Quality Control Testing: Antibody Reactive Against Recombinant Protein.



Western Blot detection against Immunogen (37.84 KDa) .

Storage Buffer: In 1x PBS, pH 7.4

Storage Instruction: Store at -20°C or lower. Aliquot to avoid repeated freezing and thawing.

MSDS: [Download](#)

Datasheet: [Download](#)

Applications

Western Blot (Recombinant protein)

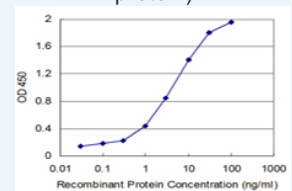
[Protocol Download](#)

Sandwich ELISA (Recombinant protein)

Application Image

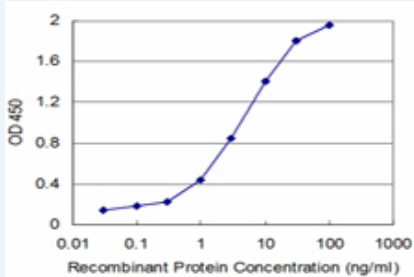
Western Blot (Recombinant protein)

Sandwich ELISA (Recombinant protein)




[enlarge](#)

ELISA



Detection limit for recombinant GST tagged SORD is approximately 0.1ng/ml as a capture antibody.

 [Protocol Download](#)

ELISA

Gene Information

Entrez GeneID: [6652](#)

GeneBank [NM_003104](#)

Accession#:

Protein [NP_003095](#)

Accession#:

Gene Name: SORD

Gene Alias: SORD1

Gene Description: sorbitol dehydrogenase

Omim ID: [182500](#)

Gene Ontology: [Hyperlink](#)

Other Designations: -

Gene Pathway

[Fructose and mannose metabolism](#) [Metabolic pathways](#)

Related Disease

[Genetic Predisposition to Disease](#) [Ovarian Neoplasms](#)