



# SZABO SCANDIC

Part of Europa Biosite

## Produktinformation



Forschungsprodukte & Biochemikalien



Zellkultur & Verbrauchsmaterial



Diagnostik & molekulare Diagnostik



Laborgeräte & Service

Weitere Information auf den folgenden Seiten!  
See the following pages for more information!



### Lieferung & Zahlungsart

siehe unsere [Liefer- und Versandbedingungen](#)

### Zuschläge

- Mindermengenzuschlag
- Trockeneiszuschlag
- Gefahrgutzuschlag
- Expressversand

### SZABO-SCANDIC HandelsgmbH

Quellenstraße 110, A-1100 Wien

T. +43(0)1 489 3961-0

F. +43(0)1 489 3961-7

[mail@szabo-scandic.com](mailto:mail@szabo-scandic.com)

[www.szabo-scandic.com](http://www.szabo-scandic.com)

[linkedin.com/company/szaboscandic](https://www.linkedin.com/company/szaboscandic) 

## SORL1 monoclonal antibody (M01), clone 3F2

產品編號 # : H00006653-M01

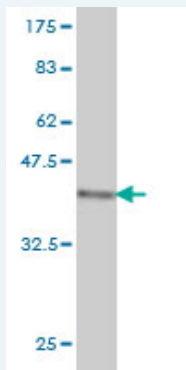
規格 : [ 100 ug ]

[List All](#)

### Specification

<b>Product Description:</b>	Mouse monoclonal antibody raised against a partial recombinant SORL1.
<b>Immunogen:</b>	SORL1 (NP_003096, 82 a.a. ~ 181 a.a) partial recombinant protein with GST tag. MW of the GST tag alone is 26 KDa.
<b>Sequence:</b>	SAALQPEPIKVYGVSLNDSHNQMVVHWAGEKSNVIVALARDSLALARPK SSDVVYSYDYGKSFKKISDKLNFGLGNRSEAVIAQFYHSPADNKRYIFAD
<b>Host:</b>	Mouse
<b>Reactivity:</b>	Human
<b>Isotype:</b>	IgG2b Kappa

**Quality Control Testing:** Antibody Reactive Against Recombinant Protein.



Western Blot detection against Immunogen (36.74 KDa) .

**Storage Buffer:** In 1x PBS, pH 7.4

**Storage Instruction:** Store at -20°C or lower. Aliquot to avoid repeated freezing and thawing.

**MSDS:** [Download](#)

**Datasheet:** [Download](#)

### Applications

**Western Blot (Recombinant protein)**

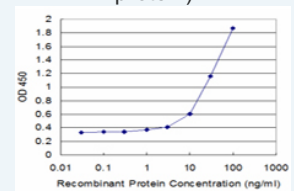
[Protocol Download](#)

**Sandwich ELISA (Recombinant protein)**

### Application Image

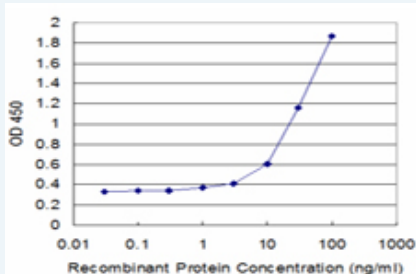
Western Blot (Recombinant protein)

Sandwich ELISA (Recombinant protein)



[enlarge](#)

ELISA



Detection limit for recombinant GST tagged SORL1 is approximately 3ng/ml as a capture antibody.

 [Protocol Download](#)

## ELISA

### Gene Information

**Entrez GeneID:** [6653](#)

**GeneBank** [NM\\_003105](#)

**Accession#:**

**Protein** [NP\\_003096](#)

**Accession#:**

**Gene Name:** SORL1

**Gene Alias:** C11orf32,FLJ21930,FLJ39258,LR11,LRP9,SORLA,SorLA-1,gp250

**Gene Description:** sortilin-related receptor, L(DLR class) A repeats-containing

**Omim ID:** [104300](#), [602005](#)

**Gene Ontology:** [Hyperlink](#)

**Gene Summary:** This gene encodes a protein that belongs to the families of vacuolar protein sorting 10 (VPS10) domain-containing receptor proteins, of low density lipoprotein receptor (LDLR) proteins, and of fibronectin type III repeats proteins. In addition to VPS10, LDLR and fibronectin type 3 domains, this protein also includes an epidermal growth factor precursor-like module, a single transmembrane segment and a cytoplasmic tail with features similar to endocytosis- and sorting-competent receptors. Members of the VPS10 domain-containing receptor family are large with many exons but the CDS lengths are usually less than 3700 nt; this gene is an exception to the pattern with a CDS length greater than 6600 nt. Very large introns typically separate the exons encoding the VPS10 domain; the remaining exons are separated by much smaller-sized introns. The encoded protein is mainly intracellular and localizes in the paranuclear compartment. It is synthesized as a preproprotein, and when the propeptide is still attached, no binding occurs to the VPS10 domain. This gene is strongly expressed in the central nervous system. [provided by RefSeq]

**Other Designations:** mosaic protein LR11,sortilin-related receptor containing LDLR class A repeats

### Related Disease

[Alzheimer Disease](#) [Alzheimer disease](#) [Cardiovascular Diseases](#) [Cerebral Hemorrhage](#) [Cerebrovascular Disorders](#) [Cognition](#) [Cognition Disorders](#) [Dementia](#) [Diabetes Mellitus, Type 2](#) [Down Syndrome](#) [Edema](#) [Genetic Predisposition to Disease](#) [Hypertension](#) [Intelligence Tests](#) [Nerve Degeneration](#) [Neuropsychological Tests](#) [Psychiatric Status Rating Scales](#) [Tobacco Use Disorder](#) [Werner syndrome](#)

