



SZABO SCANDIC

Part of Europa Biosite

Produktinformation



Forschungsprodukte & Biochemikalien



Zellkultur & Verbrauchsmaterial



Diagnostik & molekulare Diagnostik



Laborgeräte & Service

Weitere Information auf den folgenden Seiten!
See the following pages for more information!



Lieferung & Zahlungsart

siehe unsere [Liefer- und Versandbedingungen](#)

Zuschläge

- Mindermengenzuschlag
- Trockeneiszuschlag
- Gefahrgutzuschlag
- Expressversand

SZABO-SCANDIC HandelsgmbH

Quellenstraße 110, A-1100 Wien

T. +43(0)1 489 3961-0

F. +43(0)1 489 3961-7

mail@szabo-scandic.com

www.szabo-scandic.com

[linkedin.com/company/szaboscandic](https://www.linkedin.com/company/szaboscandic) 

SOX9 monoclonal antibody (M01), clone 2A2

Catalog # : H00006662-M01

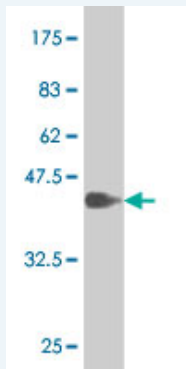
規格 : [100 ug]

List All

Specification

Product Description:	Mouse monoclonal antibody raised against a partial recombinant SOX9.
Immunogen:	SOX9 (NP_000337, 400 a.a. ~ 509 a.a) partial recombinant protein with GST tag. MW of the GST tag alone is 26 KDa.
Sequence:	EQLSPSHYSEQQQHSPQQIAYSPFNLPHYSPSPYPPITRSQYDYTDHQNS SSYYSHAAGQGTGLYSTFTYMNPAQRPMYTPADTSGVPSIPQTHSPQH WEQPVYTLTRP
Host:	Mouse
Reactivity:	Human
Isotype:	IgG1 Kappa

Quality Control Testing: Antibody Reactive Against Recombinant Protein.



Western Blot detection against Immunogen (37.84 KDa) .

Storage Buffer: In 1x PBS, pH 7.4

Storage Instruction: Store at -20°C or lower. Aliquot to avoid repeated freezing and thawing.

MSDS: [Download](#)

Datasheet: [Download](#)

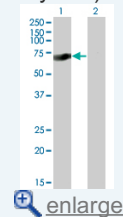
Publication Reference

- Germ cells influence cord formation and Leydig cell gene expression during mouse testis development.
Rios-Rojas C, Spiller C, Bowles J, Koopman P. Dev Dyn. 2015 Dec 5.
- Primary cilia function regulates the length of the embryonic trunk axis and urogenital field in mice.
Wainwright EN, Svigen T, Ng ET, Wicking C, Koopman P. Dev Biol. 2014 Sep 16. pii: S0012-1606(14)00444-8. doi: 10.1016/j.ydbio.2014.08.037.

Applications

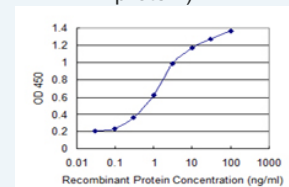
Application Image

Western Blot (Transfected lysate)



Western Blot (Recombinant protein)

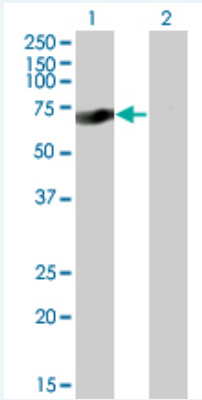
Sandwich ELISA (Recombinant protein)



[enlarge](#)

ELISA

Western Blot (Transfected lysate)



Western Blot analysis of SOX9 expression in transfected 293T cell line by SOX9 monoclonal antibody (M01), clone 2A2.

Lane 1: SOX9 transfected lysate(63.639 KDa).

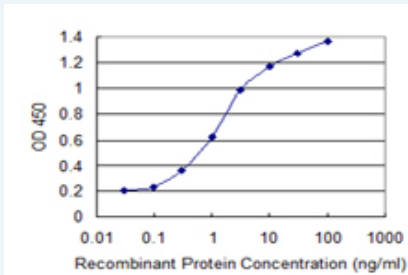
Lane 2: Non-transfected lysate.

[Protocol Download](#)

Western Blot (Recombinant protein)

[Protocol Download](#)

Sandwich ELISA (Recombinant protein)



Detection limit for recombinant GST tagged SOX9 is 0.03 ng/ml as a capture antibody.

[Protocol Download](#)

ELISA

Gene Information

Entrez GeneID: [6662](#)

GeneBank [NM_000346](#)

Accession#:

Protein [NP_000337](#)

Accession#:

Gene Name: SOX9

Gene Alias: CMD1,CMPD1,SRA1

Gene Description: SRY (sex determining region Y)-box 9

Omim ID: [114290](#), [608160](#)

Gene Ontology: [Hyperlink](#)

Gene Summary: The protein encoded by this gene recognizes the sequence CCTTGAG along with other members of the HMG-box class DNA-binding proteins. It acts during chondrocyte differentiation and, with steroidogenic factor 1, regulates transcription of the anti-Muellerian hormone (AMH) gene. Deficiencies lead to the skeletal malformation syndrome campomelic

dysplasia, frequently with sex reversal. [provided by RefSeq

Other Designations: SRY (sex determining region Y)-box 9 (campomelic dysplasia, autosomal sex-reversal), SRY (sex-determining region Y)-box 9 (campomelic dysplasia, autosomal sex-reversal), SRY (sex-determining region Y)-box 9 protein, campomelic dysplasia, autosomal sex-revers

Related Disease

[Cleft Lip](#) [Cleft Palate](#) [Genetic Predisposition to Disease](#) [Hypospadias](#) [Ovarian Neoplasms](#)
[Sex determination](#)

[服務條款](#) | [隱私權政策](#) | [著作及商標](#) | [網站地圖](#)

©2016 亞諾法生技股份有限公司 Abnova Corporation. 版權所有.