



SZABO SCANDIC

Part of Europa Biosite

Produktinformation



Forschungsprodukte & Biochemikalien



Zellkultur & Verbrauchsmaterial



Diagnostik & molekulare Diagnostik



Laborgeräte & Service

Weitere Information auf den folgenden Seiten!
See the following pages for more information!



Lieferung & Zahlungsart

siehe unsere [Liefer- und Versandbedingungen](#)

Zuschläge

- Mindermengenzuschlag
- Trockeneiszuschlag
- Gefahrgutzuschlag
- Expressversand

SZABO-SCANDIC HandelsgmbH

Quellenstraße 110, A-1100 Wien

T. +43(0)1 489 3961-0

F. +43(0)1 489 3961-7

mail@szabo-scandic.com

www.szabo-scandic.com

[linkedin.com/company/szaboscandic](https://www.linkedin.com/company/szaboscandic) 

SOX9 monoclonal antibody (M04), clone 3F11

Catalog # : H00006662-M04

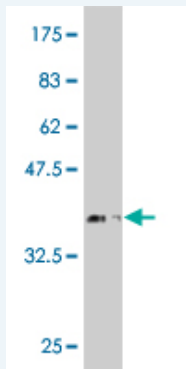
規格 : [100 ug]

[List All](#)

Specification

| | |
|-----------------------------|--|
| Product Description: | Mouse monoclonal antibody raised against a partial recombinant SOX9. |
| Immunogen: | SOX9 (NP_000337, 400 a.a. ~ 509 a.a) partial recombinant protein with GST tag. MW of the GST tag alone is 26 KDa. |
| Sequence: | EQLSPSHYSEQQHQSPQQAAYSPFNLPHYSPSYPPITRSQYDYTDHQNS SSYYSHAAGQGTGLYSTFTYMNPAQRPMYTPADTSGVPSIPQTHSPQH WEQPVYTLTRP |
| Host: | Mouse |
| Reactivity: | Human |
| Isotype: | IgG1 Kappa |

Quality Control Testing: Antibody Reactive Against Recombinant Protein.



Western Blot detection against Immunogen (37.84 KDa) .

Storage Buffer: In 1x PBS, pH 7.4

Storage Instruction: Store at -20°C or lower. Aliquot to avoid repeated freezing and thawing.

MSDS: [Download](#)

Datasheet: [Download](#)

Publication Reference

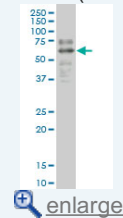
1. Pathological characteristics of intraductal polypoid neoplasms of bile ducts in Thailand. Nitta T, Nakanuma Y, Sato Y, Hirano S, Pairojkul C. Int J Clin Exp Pathol. 2015 Jul 1;8(7):8284-90

Applications

Western Blot (Cell lysate)

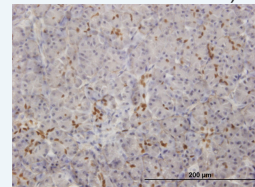
Application Image

Western Blot (Cell lysate)



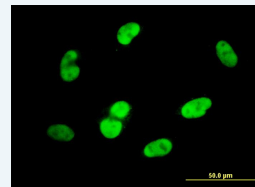
Western Blot (Recombinant protein)

Immunohistochemistry (Formalin/PFA-fixed paraffin-embedded sections)



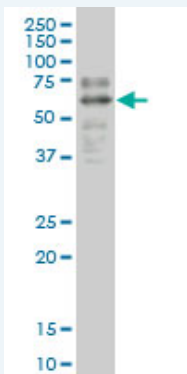
[enlarge](#)

Immunofluorescence



[enlarge](#)

ELISA



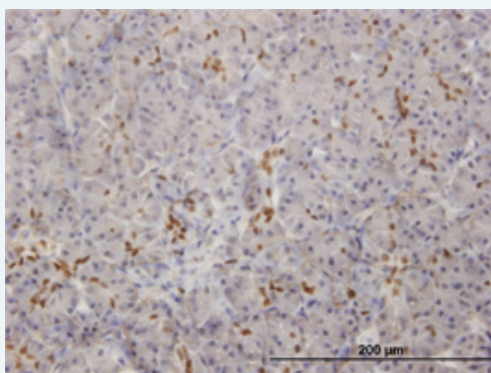
SOX9 monoclonal antibody (M04), clone 3F11 Western Blot analysis of SOX9 expression in HepG2 (Cat # L019V1).

[Protocol Download](#)

Western Blot (Recombinant protein)

[Protocol Download](#)

Immunohistochemistry (Formalin/PFA-fixed paraffin-embedded sections)

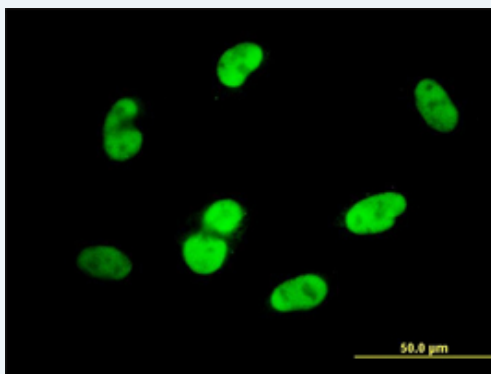


[enlarge this image](#)

Immunoperoxidase of monoclonal antibody to SOX9 on formalin-fixed paraffin-embedded human pancreas. [antibody concentration 1.5 ug/ml]

[Protocol Download](#)

Immunofluorescence



[enlarge this image](#)

Immunofluorescence of monoclonal antibody to SOX9 on HepG2 cell. [antibody concentration 10 ug/ml]

[Protocol Download](#)

ELISA

Gene Information

Entrez GeneID: [6662](#)

GeneBank [NM_000346](#)

Accession#:

Protein [NP_000337](#)

Accession#:

Gene Name: SOX9

Gene Alias: CMD1,CMPD1,SRA1

Gene Description: SRY (sex determining region Y)-box 9

Omim ID: [114290](#), [608160](#)

Gene Ontology: [Hyperlink](#)

Gene Summary: The protein encoded by this gene recognizes the sequence CCTTGAG along with other members of the HMG-box class DNA-binding proteins. It acts during chondrocyte differentiation and, with steroidogenic factor 1, regulates transcription of the anti-Muellerian hormone (AMH) gene. Deficiencies lead to the skeletal malformation syndrome campomelic dysplasia, frequently with sex reversal. [provided by RefSeq]

Other Designations: SRY (sex determining region Y)-box 9 (campomelic dysplasia, autosomal sex-reversal),SRY (sex-determining region Y)-box 9 (campomelic dysplasia, autosomal sex-reversal),SRY (sex-determining region Y)-box 9 protein,campomelic dysplasia, autosomal sex-revers

Related Disease

[Cleft Lip](#) [Cleft Palate](#) [Genetic Predisposition to Disease](#) [Hypospadias](#) [Ovarian Neoplasms](#) [Sex determination](#)

[服務條款](#) | [隱私權政策](#) | [著作及商標](#) | [網站地圖](#)

©2016 亞諾法生技股份有限公司 Abnova Corporation. 版權所有.