



# SZABO SCANDIC

Part of Europa Biosite

## Produktinformation



Forschungsprodukte & Biochemikalien



Zellkultur & Verbrauchsmaterial



Diagnostik & molekulare Diagnostik



Laborgeräte & Service

Weitere Information auf den folgenden Seiten!  
See the following pages for more information!



### Lieferung & Zahlungsart

siehe unsere [Liefer- und Versandbedingungen](#)

### Zuschläge

- Mindermengenzuschlag
- Trockeneiszuschlag
- Gefahrgutzuschlag
- Expressversand

### SZABO-SCANDIC HandelsgmbH

Quellenstraße 110, A-1100 Wien

T. +43(0)1 489 3961-0

F. +43(0)1 489 3961-7

[mail@szabo-scandic.com](mailto:mail@szabo-scandic.com)

[www.szabo-scandic.com](http://www.szabo-scandic.com)

[linkedin.com/company/szaboscandic](https://www.linkedin.com/company/szaboscandic) 

## SOX15 polyclonal antibody (A01)

Catalog # : H00006665-A01

規格 : [ 50 uL ]

List All

### Specification

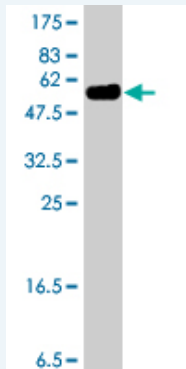
<b>Product Description:</b>	Mouse polyclonal antibody raised against a full-length recombinant SOX15.
<b>Immunogen:</b>	SOX15 (AAH00985, 1 a.a. ~ 233 a.a) full-length recombinant protein with GST tag.
<b>Sequence:</b>	MALPGSSQDQAWSLEPPAATAAASSSSGPQEREGAGSPAAPGTLPLEK VKRPMNAFMVWSSAQRRQMAQQNPKMHNSEISKRLGAQWKLLDEDEK RPFVVEAKRLRARHLRDYDPYKYRPRRKAKSSGAGPSRCGQGGRGNLAS GGPLWGPYATTQPSRFGYRPPSYSTAYLPGSYGSSHCKLEAPSPC SLPQSDPRLQGELLPTYTHYLPPGSPTPYNPPLAGAPMPLTHL
<b>Host:</b>	Mouse
<b>Reactivity:</b>	Human

### Application Image

Western Blot (Recombinant protein)

ELISA

**Quality Control Testing:** Antibody Reactive Against Recombinant Protein.



Western Blot detection against Immunogen (51.74 KDa) .

**Storage Buffer:** 50 % glycerol

**Storage Instruction:** Store at -20°C or lower. Aliquot to avoid repeated freezing and thawing.

**MSDS:** [Download](#)

**Datasheet:** [Download](#)

### Applications

Western Blot (Recombinant protein)

[Protocol Download](#)

ELISA

### Gene Information

Entrez GeneID: [6665](#)

**GeneBank  
Accession#:** [BC000985](#)

**Protein  
Accession#:** [AAH00985](#)

**Gene Name:** SOX15

**Gene Alias:** SOX20,SOX26,SOX27

**Gene  
Description:** SRY (sex determining region Y)-box 15

**Omim ID:** [601297](#)

**Gene Ontology:** [Hyperlink](#)

**Gene Summary:** This gene encodes a member of the SOX (SRY-related HMG-box) family of transcription factors involved in the regulation of embryonic development and in the determination of the cell fate. The encoded protein may act as a transcriptional regulator after forming a protein complex with other proteins. [provided by RefSeq]

**Other  
Designations:** SRY (sex determining region Y)-box 20,SRY-box 15

---

[服務條款](#) | [隱私權政策](#) | [著作及商標](#) | [網站地圖](#)

©2016 亞諾法生技股份有限公司 Abnova Corporation. 版權所有.