



SZABO SCANDIC

Part of Europa Biosite

Produktinformation



Forschungsprodukte & Biochemikalien



Zellkultur & Verbrauchsmaterial



Diagnostik & molekulare Diagnostik



Laborgeräte & Service

Weitere Information auf den folgenden Seiten!
See the following pages for more information!



Lieferung & Zahlungsart

siehe unsere [Liefer- und Versandbedingungen](#)

Zuschläge

- Mindermengenzuschlag
- Trockeneiszuschlag
- Gefahrgutzuschlag
- Expressversand

SZABO-SCANDIC HandelsgmbH

Quellenstraße 110, A-1100 Wien

T. +43(0)1 489 3961-0

F. +43(0)1 489 3961-7

mail@szabo-scandic.com

www.szabo-scandic.com

[linkedin.com/company/szaboscandic](https://www.linkedin.com/company/szaboscandic) 

SOX15 monoclonal antibody (M12), clone 1B3

Catalog # : H00006665-M12

規格 : [100 ug]

[List All](#)

Specification

Product Description: Mouse monoclonal antibody raised against a full-length recombinant SOX15.

Immunogen: SOX15 (AAH00985, 1 a.a. ~ 233 a.a) full-length recombinant protein with GST tag. MW of the GST tag alone is 26 KDa.

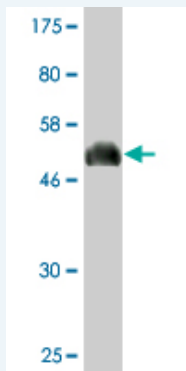
Sequence: MALPGSSQDQAWSLEPPAATAAASSSSGPQEREGAGSPAAPGTLPLEK
VKRPMNAFMVWSSAQRRQMAQQNPKMHNSEISKRLGAQWKLLDEDEK
RPFVEEAKRLRARHLRDYDPYKYRPRRKAKSSGAGPSRCGQGRGNLAS
GGPLWGPYATTQPSRFGYRPPSYSTAYLPGSYGSSHCKLEAPSPC
SLPQSDPRLQGELLPTYTHYLPPGSPTYPNPLAGAPMPLTHL

Host: Mouse

Reactivity: Human

Isotype: IgG2a Kappa

Quality Control Testing: Antibody Reactive Against Recombinant Protein.



Western Blot detection against Immunogen (51.37 KDa) .

Storage Buffer: In 1x PBS, pH 7.4

Storage Instruction: Store at -20°C or lower. Aliquot to avoid repeated freezing and thawing.

MSDS: [Download](#)

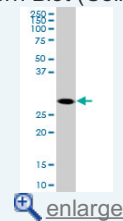
Datasheet: [Download](#)

Applications

Western Blot (Cell lysate)

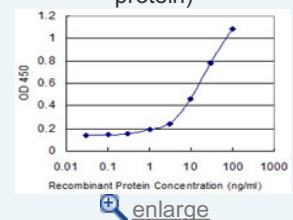
Application Image

Western Blot (Cell lysate)

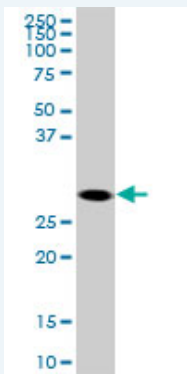


Western Blot (Recombinant protein)

Sandwich ELISA (Recombinant protein)



ELISA



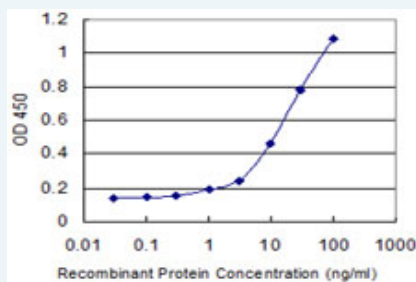
SOX15 monoclonal antibody (M12), clone 1B3. Western Blot analysis of SOX15 expression in A-431 (Cat # L015V1).

[Protocol Download](#)

Western Blot (Recombinant protein)

[Protocol Download](#)

Sandwich ELISA (Recombinant protein)



Detection limit for recombinant GST tagged SOX15 is 0.3 ng/ml as a capture antibody.

[Protocol Download](#)

ELISA

Gene Information

Entrez GeneID: [6665](#)

GeneBank [BC000985](#)

Accession#:

Protein [AAH00985](#)

Accession#:

Gene Name: SOX15

Gene Alias: SOX20,SOX26,SOX27

Gene Description: SRY (sex determining region Y)-box 15

Omim ID: [601297](#)

Gene Ontology: [Hyperlink](#)

Gene Summary: This gene encodes a member of the SOX (SRY-related HMG-box) family of transcription factors involved in the regulation of embryonic development and in the determination of the cell fate. The encoded protein may act as a transcriptional regulator after forming a protein complex with other proteins. [provided by RefSeq]

Other Designations: SRY (sex determining region Y)-box 20,SRY-box 15

