



SZABO SCANDIC

Part of Europa Biosite

Produktinformation



Forschungsprodukte & Biochemikalien



Zellkultur & Verbrauchsmaterial



Diagnostik & molekulare Diagnostik



Laborgeräte & Service

Weitere Information auf den folgenden Seiten!
See the following pages for more information!



Lieferung & Zahlungsart

siehe unsere [Liefer- und Versandbedingungen](#)

Zuschläge

- Mindermengenzuschlag
- Trockeneiszuschlag
- Gefahrgutzuschlag
- Expressversand

SZABO-SCANDIC HandelsgmbH

Quellenstraße 110, A-1100 Wien

T. +43(0)1 489 3961-0

F. +43(0)1 489 3961-7

mail@szabo-scandic.com

www.szabo-scandic.com

[linkedin.com/company/szaboscandic](https://www.linkedin.com/company/szaboscandic) 

SP1 monoclonal antibody (M01), clone 4H6

Catalog # : H00006667-M01

規格 : [100 ug]

List All

Specification

Product Description: Mouse monoclonal antibody raised against a partial recombinant SP1.

Immunogen: SP1 (NP_612482.2, 89 a.a. ~ 198 a.a) partial recombinant protein with GST tag. MW of the GST tag alone is 26 KDa.

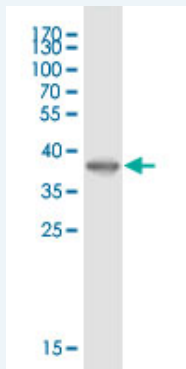
Sequence: GTGELDLTATQLSQGANGWQIISSSSGATPTSKEQSGSSTNGSNGSES
SKNRTVSGGQYVVAAPNLQNNQVLTGLPGVMPNIQYQVIPQFQTVDG
QQLQFAATGAQVQQ

Host: Mouse

Reactivity: Human, Mouse

Isotype: IgG Mix Kappa

Quality Control Testing: Antibody Reactive Against Recombinant Protein.



Western Blot detection against Immunogen (37.73 KDa) .

Storage Buffer: In 1x PBS, pH 7.4

Storage Instruction: Store at -20°C or lower. Aliquot to avoid repeated freezing and thawing.

MSDS: [Download](#)

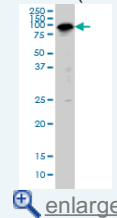
Datasheet: [Download](#)

Applications

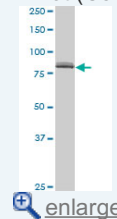
Western Blot (Cell lysate)

Application Image

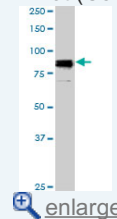
Western Blot (Cell lysate)



Western Blot (Cell lysate)

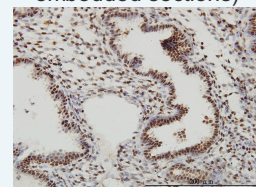


Western Blot (Cell lysate)

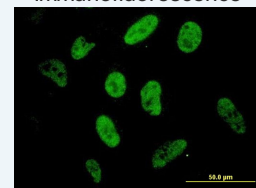


Western Blot (Recombinant protein)

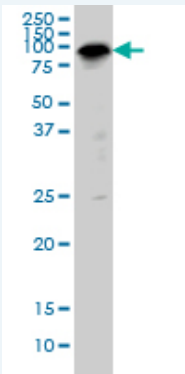
Immunohistochemistry (Formalin/PFA-fixed paraffin-embedded sections)



Immunofluorescence

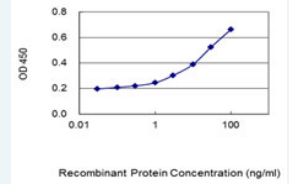


Sandwich ELISA (Recombinant protein)



SP1 monoclonal antibody (M01), clone 4H6 Western Blot analysis of SP1 expression in IMR-32 (Cat # L008V1).

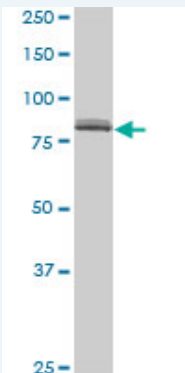
 [Protocol Download](#)



 [enlarge](#)

ELISA

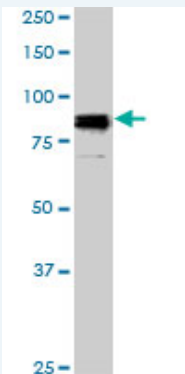
Western Blot (Cell lysate)



SP1 monoclonal antibody (M01), clone 4H6. Western Blot analysis of SP1 expression in Hela S3 NE (Cat # L013V3).

 [Protocol Download](#)

Western Blot (Cell lysate)



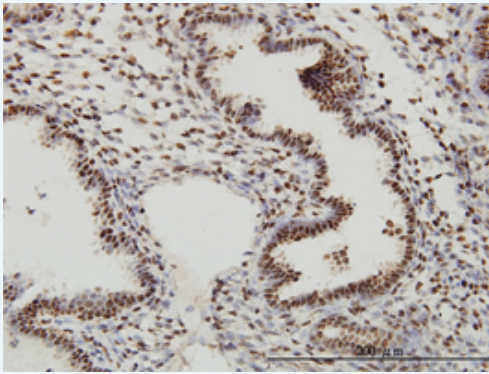
SP1 monoclonal antibody (M01), clone 4H6. Western Blot analysis of SP1 expression in NIH/3T3 (Cat # L018V1).

 [Protocol Download](#)

Western Blot (Recombinant protein)

 [Protocol Download](#)

Immunohistochemistry (Formalin/PFA-fixed paraffin-embedded sections)

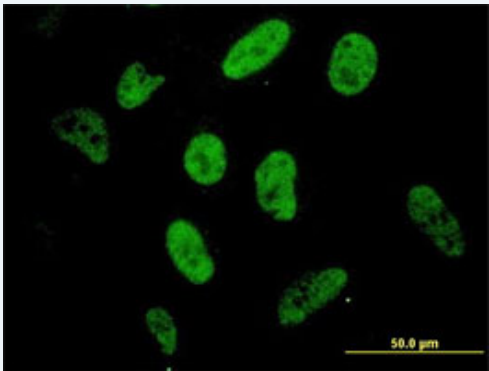


[enlarge this image](#)

Immunoperoxidase of monoclonal antibody to SP1 on formalin-fixed paraffin-embedded human endometrium. [antibody concentration 1 ~ 10 ug/ml]

[Protocol Download](#)

Immunofluorescence

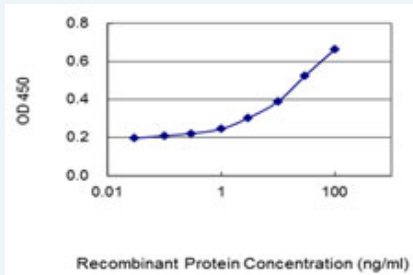


[enlarge this image](#)

Immunofluorescence of monoclonal antibody to SP1 on HeLa cell. [antibody concentration 10 ug/ml]

[Protocol Download](#)

Sandwich ELISA (Recombinant protein)



Detection limit for recombinant GST tagged SP1 is 0.3 ng/ml as a capture antibody.

[Protocol Download](#)

ELISA

Gene Information

Entrez GeneID: [6667](#)

GeneBank [NM_138473.2](#)

Accession#:

Protein [NP_612482.2](#)

Accession#:

Gene Name: SP1

Gene Alias: -

Gene Sp1 transcription factor

Description:

Omim ID: [189906](#)

Gene Ontology: [Hyperlink](#)

Other specificity protein 1

Designations:

Gene Pathway

[Huntington's disease](#) [TGF-beta signaling pathway](#)

Related Disease

[Head and Neck Neoplasms](#) [Neoplasm Recurrence, Local](#) [Neoplasms, Second Primary](#)

[服務條款](#) | [隱私權政策](#) | [著作及商標](#) | [網站地圖](#)

©2016 亞諾法生技股份有限公司 Abnova Corporation. 版權所有.