



SZABO SCANDIC

Part of Europa Biosite

Produktinformation



Forschungsprodukte & Biochemikalien



Zellkultur & Verbrauchsmaterial



Diagnostik & molekulare Diagnostik



Laborgeräte & Service

Weitere Information auf den folgenden Seiten!
See the following pages for more information!



Lieferung & Zahlungsart

siehe unsere [Liefer- und Versandbedingungen](#)

Zuschläge

- Mindermengenzuschlag
- Trockeneiszuschlag
- Gefahrgutzuschlag
- Expressversand

SZABO-SCANDIC HandelsgmbH

Quellenstraße 110, A-1100 Wien

T. +43(0)1 489 3961-0

F. +43(0)1 489 3961-7

mail@szabo-scandic.com

www.szabo-scandic.com

[linkedin.com/company/szaboscandic](https://www.linkedin.com/company/szaboscandic) 

SP1 monoclonal antibody (M05), clone 4B11

Catalog # : H00006667-M05

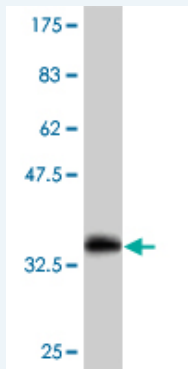
規格 : [100 ug]

[List All](#)

Specification

Product Description:	Mouse monoclonal antibody raised against a partial recombinant SP1.
Immunogen:	SP1 (NP_612482, 522 a.a. ~ 618 a.a) partial recombinant protein with GST tag. MW of the GST tag alone is 26 KDa.
Sequence:	QLSSMPGLQTINLSALGTSGIQVHPIQGLPLAIANAPGDHGAQLGLHGAG GDGIHDDTAGGEEGENSPDAQPQAGRRTT RREACTCPYCKDSEGRGSG *
Host:	Mouse
Reactivity:	Human, Mouse
Isotype:	IgG2a Kappa

Quality Control Testing: Antibody Reactive Against Recombinant Protein.



Western Blot detection against Immunogen (36.78 KDa) .

Storage Buffer: In 1x PBS, pH 7.4

Storage Instruction: Store at -20°C or lower. Aliquot to avoid repeated freezing and thawing.

MSDS: [Download](#)

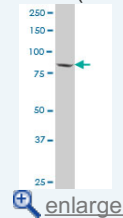
Datasheet: [Download](#)

Applications

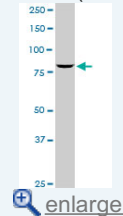
Western Blot (Cell lysate)

Application Image

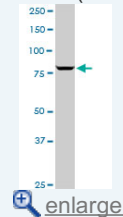
Western Blot (Cell lysate)



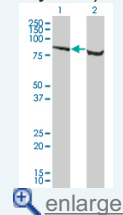
Western Blot (Cell lysate)



Western Blot (Cell lysate)

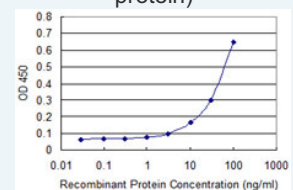


Western Blot (Transfected lysate)

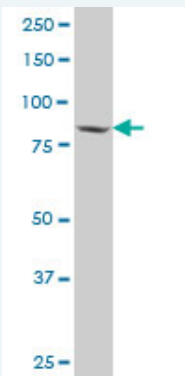


Western Blot (Recombinant protein)

Sandwich ELISA (Recombinant protein)



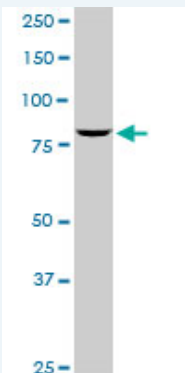
ELISA



SP1 monoclonal antibody (M05), clone 4B11 Western Blot analysis of SP1 expression in HeLa (Cat # L013V1).

 [Protocol Download](#)

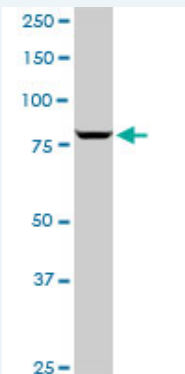
Western Blot (Cell lysate)



SP1 monoclonal antibody (M05), clone 4B11. Western Blot analysis of SP1 expression in Raw 264.7(Cat # L024V1).

 [Protocol Download](#)

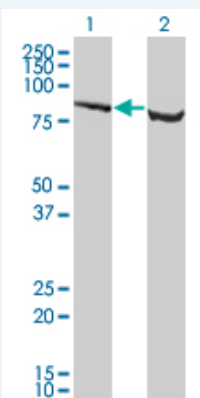
Western Blot (Cell lysate)



SP1 monoclonal antibody (M05), clone 4B11. Western Blot analysis of SP1 expression in NIH/3T3(Cat # L018V1).

 [Protocol Download](#)

Western Blot (Transfected lysate)



Western Blot analysis of SP1 expression in transfected 293T cell line by SP1 monoclonal antibody (M05), clone 4B11.

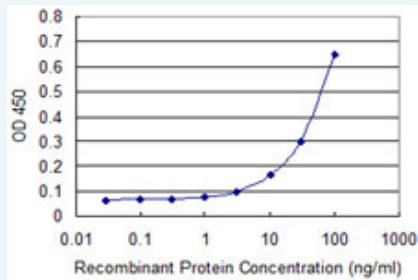
Lane 1: SP1 transfected lysate(80.693 KDa).
Lane 2: Non-transfected lysate.

 [Protocol Download](#)

Western Blot (Recombinant protein)

 [Protocol Download](#)

Sandwich ELISA (Recombinant protein)



Detection limit for recombinant GST tagged SP1 is approximately 10ng/ml as a capture antibody.

 [Protocol Download](#)

ELISA

Gene Information

Entrez GeneID: [6667](#)

GeneBank [NM_138473](#)
Accession#:

Protein [NP_612482](#)
Accession#:

Gene Name: SP1

Gene Alias: -

Gene Description: Sp1 transcription factor

Omim ID: [189906](#)

Gene Ontology: [Hyperlink](#)

Other Designations: specificity protein 1

Gene Pathway

[Huntington's disease TGF-beta signaling pathway](#)

Related Disease

[Head and Neck Neoplasms](#) [Neoplasm Recurrence, Local](#) [Neoplasms, Second Primary](#)