



# SZABO SCANDIC

Part of Europa Biosite

## Produktinformation



Forschungsprodukte & Biochemikalien



Zellkultur & Verbrauchsmaterial



Diagnostik & molekulare Diagnostik



Laborgeräte & Service

Weitere Information auf den folgenden Seiten!  
See the following pages for more information!



### Lieferung & Zahlungsart

siehe unsere [Liefer- und Versandbedingungen](#)

### Zuschläge

- Mindermengenzuschlag
- Trockeneiszuschlag
- Gefahrgutzuschlag
- Expressversand

### SZABO-SCANDIC HandelsgmbH

Quellenstraße 110, A-1100 Wien

T. +43(0)1 489 3961-0

F. +43(0)1 489 3961-7

[mail@szabo-scandic.com](mailto:mail@szabo-scandic.com)

[www.szabo-scandic.com](http://www.szabo-scandic.com)

[linkedin.com/company/szaboscandic](https://www.linkedin.com/company/szaboscandic) 



**SP100 purified MaxPab mouse polyclonal antibody (B01P)** MaxPab®

Catalog # : H00006672-B01P

規格 : [ 50 ug ]

[List All](#)

**Specification**

<b>Product Description:</b>	Mouse polyclonal antibody raised against a full-length human SP100 protein.
<b>Immunogen:</b>	SP100 (AAH11562.1, 1 a.a. ~ 480 a.a) full-length human protein.
<b>Sequence:</b>	MAGGGGDLSTRRLNECISPVANEMNHLPAHSHDLQRMFTEDQGVDRL LYDIVFKHFKRNKVEISNAIKTFPFLEGLRDRDLITNMFEDSQDSCRNL VPVQRVWYNLSELEKTFNLPVLEALFSDVNMQEYPLIHYYKGFENVIHD KLPLQESEEEEEEREERSGLQLSLEQGTGENSFRSLTWPPSGSPSHAGTT PPENGLSEHPCETEQINAKRKDTTSDKDDSLGSQQTNEQCAQKAEPTE CEQIAVQVNGDAGREMPCLPCDEESPEAELHNGIQINSCSVRLVDIK KEKPFNSKVEQQAQARTHNNQASDIVISEDSEGSTDVDEPLEVFISAP RSEPVINNDNPLESNDEKEGQEATCSRPIVPEPMDFRKLSTFRESFKKR VIGQDHDFSESEEEAPAEASSGALRSKHGEKAPMTRSSTSTWRIPSRK RRFSSSDFSDLSNGEELQETCSSSLRRGSGKED
<b>Host:</b>	Mouse
<b>Reactivity:</b>	Human
<b>Quality Control Testing:</b>	Antibody reactive against mammalian transfected lysate.
<b>Storage Buffer:</b>	In 1x PBS, pH 7.4
<b>Storage Instruction:</b>	Store at -20°C or lower. Aliquot to avoid repeated freezing and thawing.
<b>MSDS:</b>	 <a href="#">Download</a>
<b>Datasheet:</b>	 <a href="#">Download</a>

**Publication Reference**

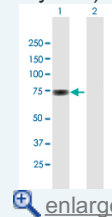
- Evidence for a dual antiviral role of the major ND10 component Sp100 during the immediate-early and late phase of the human cytomegalovirus replication cycle.  
Tavalai N, Adler M, Scherer M, Riedl Y, Stamminger T. J Virol. 2011 Sep;85(18):9447-58. Epub 2011 Jul 6.
- Human cytomegalovirus immediate-early gene expression is restricted by the ND10 component Sp100.  
Adler M, Tavalai N, Muller R, Stamminger T. J Gen Virol. 2011 Apr 6. [Epub ahead of print]


**Applications**

**Western Blot (Transfected lysate)**

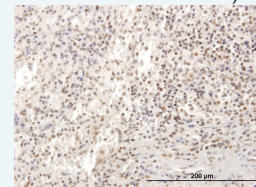
**Application Image**


Western Blot (Transfected lysate)

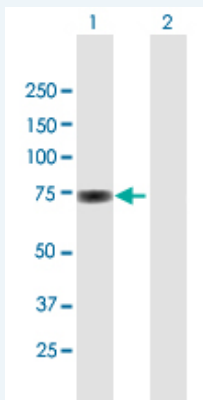


 [enlarge](#)

Immunohistochemistry (Formalin/PFA-fixed paraffin-embedded sections)



 [enlarge](#)

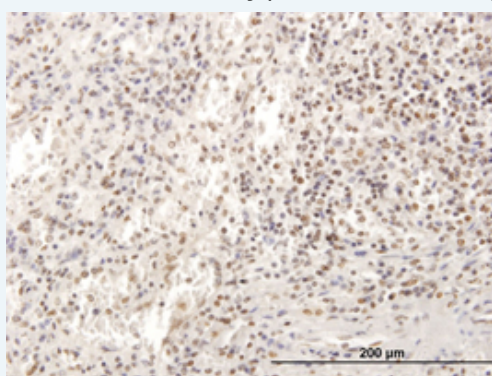


Western Blot analysis of SP100 expression in transfected 293T cell line ([H00006672-T01](#)) by SP100 MaxPab polyclonal antibody.

Lane 1: SP100 transfected lysate(52.8 KDa).  
Lane 2: Non-transfected lysate.

[Protocol Download](#)

### Immunohistochemistry (Formalin/PFA-fixed paraffin-embedded sections)



enlarge this image

Immunoperoxidase of purified MaxPab antibody to SP100 on formalin-fixed paraffin-embedded human spleen. [antibody concentration 3 ug/ml]

[Protocol Download](#)

### Gene Information

Entrez GeneID: [6672](#)

GeneBank [BC011562.1](#)  
Accession#:

Protein [AAH11562.1](#)  
Accession#:

Gene Name: SP100

Gene Alias: DKFZp686E07254,FLJ00340,FLJ34579

Gene Description: SP100 nuclear antigen

Omim ID: [604585](#)

Gene Ontology: [Hyperlink](#)

Other Designations: SP100-HMG nuclear autoantigen,nuclear antigen Sp100

### Related Disease

[Cleft Lip](#) [Cleft Palate](#) [Craniofacial Abnormalities](#) [Genetic Predisposition to Disease](#)  
[Mouth Abnormalities](#) [Narcolepsy](#) [Tobacco Use Disorder](#)

---

[服務條款](#) | [隱私權政策](#) | [著作及商標](#) | [網站地圖](#)

©2016 亞諾法生技股份有限公司 Abnova Corporation. 版權所有.