



SZABO SCANDIC

Part of Europa Biosite

Produktinformation



Forschungsprodukte & Biochemikalien



Zellkultur & Verbrauchsmaterial



Diagnostik & molekulare Diagnostik



Laborgeräte & Service

Weitere Information auf den folgenden Seiten!
See the following pages for more information!



Lieferung & Zahlungsart

siehe unsere [Liefer- und Versandbedingungen](#)

Zuschläge

- Mindermengenzuschlag
- Trockeneiszuschlag
- Gefahrgutzuschlag
- Expressversand

SZABO-SCANDIC HandelsgmbH

Quellenstraße 110, A-1100 Wien

T. +43(0)1 489 3961-0

F. +43(0)1 489 3961-7

mail@szabo-scandic.com

www.szabo-scandic.com

[linkedin.com/company/szaboscandic](https://www.linkedin.com/company/szaboscandic) 

SP100 monoclonal antibody (M02), clone 1G6

Catalog # : H00006672-M02

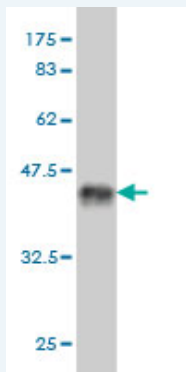
規格 : [100 ug]

[List All](#)

Specification

Product Description:	Mouse monoclonal antibody raised against a partial recombinant SP100.
Immunogen:	SP100 (NP_003104, 1 a.a. ~ 98 a.a) partial recombinant protein with GST tag. MW of the GST tag alone is 26 KDa.
Sequence:	MAGGGGDLSTRRLNECISPVANEMNHLPAHSHDLQRMFTEDQGVDRL LYDIVFKHFKRNKVEISNAIKKTFPFLEGLRDRDLITNKMFEDESQDSCRN
Host:	Mouse
Reactivity:	Human
Isotype:	IgG2a Kappa

Quality Control Testing: Antibody Reactive Against Recombinant Protein.



Western Blot detection against Immunogen (36.52 KDa) .

Storage Buffer: In 1x PBS, pH 7.4

Storage Instruction: Store at -20°C or lower. Aliquot to avoid repeated freezing and thawing.

MSDS: [Download](#)

Datasheet: [Download](#)

Publication Reference

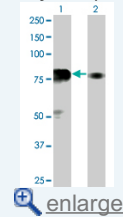
1. [Quantification of the Host Response Proteome after Herpes Simplex 1 Virus infection.](#) Berard AR, Coombs KM, Severini AJ Proteome Res. 2015 Apr 15.

Applications

Western Blot (Transfected lysate)

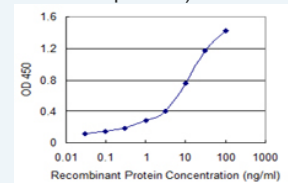
Application Image

Western Blot (Transfected lysate)



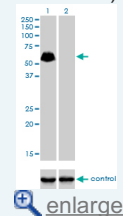
Western Blot (Recombinant protein)

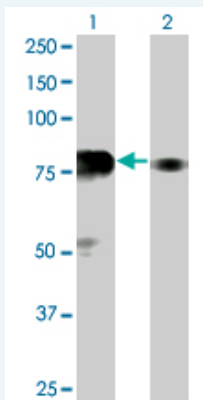
Sandwich ELISA (Recombinant protein)



ELISA

RNAi Knockdown (Antibody validated)





Western Blot analysis of SP100 expression in transfected 293T cell line by SP100 monoclonal antibody (M02), clone 1G6.

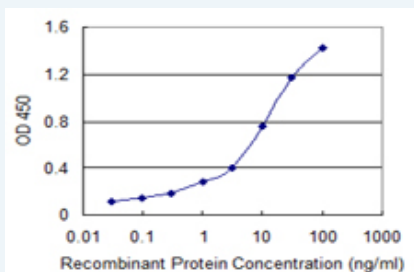
Lane 1: SP100 transfected lysate(100.417 KDa).
Lane 2: Non-transfected lysate.

[Protocol Download](#)

Western Blot (Recombinant protein)

[Protocol Download](#)

Sandwich ELISA (Recombinant protein)

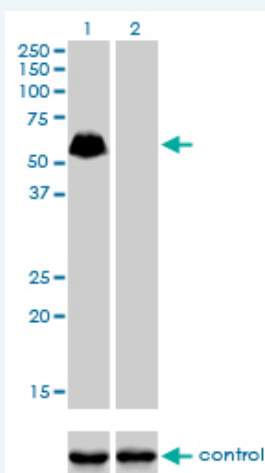


Detection limit for recombinant GST tagged SP100 is 0.03 ng/ml as a capture antibody.

[Protocol Download](#)

ELISA

RNAi Knockdown (Antibody validated)



Western blot analysis of SP100 over-expressed 293 cell line, cotransfected with SP100 Validated Chimera RNAi (Cat # H00006672-R01V) (Lane 2) or non-transfected control (Lane 1). Blot probed with SP100 monoclonal antibody (M02), clone 1G6 (Cat # H00006672-M02). GAPDH (36.1 kDa) used as specificity and loading control.

[Protocol Download](#)

Gene Information

Entrez GeneID: [6672](#)

GeneBank [NM_003113](#)

Accession#:

Protein [NP_003104](#)

Accession#:

Gene Name: SP100

Gene Alias: DKFZp686E07254,FLJ00340,FLJ34579

Gene Description: SP100 nuclear antigen

Omim ID: [604585](#)

Gene Ontology: [Hyperlink](#)

Other Designations: SP100-HMG nuclear autoantigen,nuclear antigen Sp100

Related Disease

[Cleft Lip](#) [Cleft Palate](#) [Craniofacial Abnormalities](#) [Genetic Predisposition to Disease](#)
[Mouth Abnormalities](#) [Narcolepsy](#) [Tobacco Use Disorder](#)

[服務條款](#) | [隱私權政策](#) | [著作及商標](#) | [網站地圖](#)

©2016 亞諾法生技股份有限公司 Abnova Corporation. 版權所有.