



SZABO SCANDIC

Part of Europa Biosite

Produktinformation



Forschungsprodukte & Biochemikalien



Zellkultur & Verbrauchsmaterial



Diagnostik & molekulare Diagnostik



Laborgeräte & Service

Weitere Information auf den folgenden Seiten!
See the following pages for more information!



Lieferung & Zahlungsart

siehe unsere [Liefer- und Versandbedingungen](#)

Zuschläge

- Mindermengenzuschlag
- Trockeneiszuschlag
- Gefahrgutzuschlag
- Expressversand

SZABO-SCANDIC HandelsgmbH

Quellenstraße 110, A-1100 Wien

T. +43(0)1 489 3961-0

F. +43(0)1 489 3961-7

mail@szabo-scandic.com

www.szabo-scandic.com

[linkedin.com/company/szaboscandic](https://www.linkedin.com/company/szaboscandic) 

SPARC monoclonal antibody (M02), clone 1B2

產品編號 #: H00006678-M02

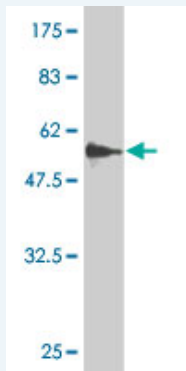
規格 : [50 ug]

[List All](#)

Specification

Product Description:	Mouse monoclonal antibody raised against a full length recombinant SPARC.
Immunogen:	SPARC (AAH04974.1, 1 a.a. ~ 303 a.a) full-length recombinant protein with GST tag. MW of the GST tag alone is 26 KDa.
Sequence:	MRAWIFFLLCLAGRALAAPQQEALPDETEWVEETVAEVTEVSVGANPVQ VEVGEFDDGAEETEEVVAENPCQNHCKHGKVCELDENNTPMCVCQD PTSCPAPIGEFEKVCSDNKTDFDSSCHFFATKCTLEGTKKGKHLHLDYIG PCKYIPPCLDSELETFPLRMRDWLKNMLVTLYERDEDNLLTEKQKLRVK KIHENEKRLAEGDHPVELLARDFEKNYNMIFPVHWQFGQLDQHPIDGYL SHTELAPLRAPLIPMEHCTTRFFETCDLNDKYIALDEWAGCFGIKQKDID KDLVI
Host:	Mouse
Reactivity:	Human
Isotype:	IgG1 Kappa

Quality Control Testing: Antibody Reactive Against Recombinant Protein.



Western Blot detection against Immunogen (59.07 KDa) .

Storage Buffer: In 1x PBS, pH 7.4

Storage Instruction: Store at -20°C or lower. Aliquot to avoid repeated freezing and thawing.

MSDS: [Download](#)

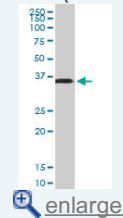
Datasheet: [Download](#)

Publication Reference

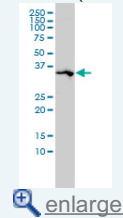
1. [The matricellular protein SPARC supports follicular dendritic cell networking toward Th17 responses.](#)
Piconese S, Costanza M, Tripodo C, Sangaletti S, Musio S, Pittoni P, Poliani PL, Burocchi A, Passafaro AL, Gorzanelli A, Vitali C, Chiodoni C, Barnaba V, Pedotti R, Colombo MP. *J Autoimmun.* 2011 Sep 28.

Application Image

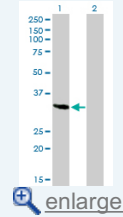
Western Blot (Tissue lysate)



Western Blot (Cell lysate)

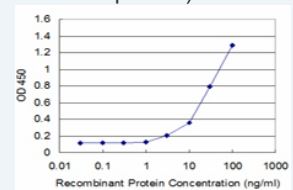


Western Blot (Transfected lysate)



Western Blot (Recombinant protein)

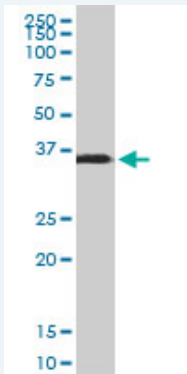
Sandwich ELISA (Recombinant protein)



ELISA

Applications

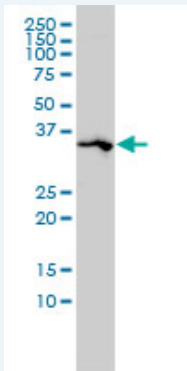
Western Blot (Tissue lysate)



SPARC monoclonal antibody (M02), clone 1B2. Western Blot analysis of SPARC expression in human kidney.

[Protocol Download](#)

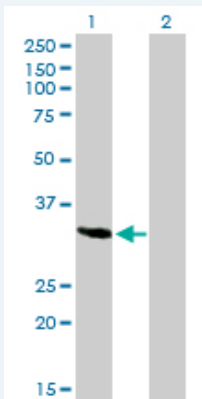
Western Blot (Cell lysate)



SPARC monoclonal antibody (M02), clone 1B2 Western Blot analysis of SPARC expression in A-431 (Cat # L015V1).

[Protocol Download](#)

Western Blot (Transfected lysate)



Western Blot analysis of SPARC expression in transfected 293T cell line by SPARC monoclonal antibody (M02), clone 1B2.

Lane 1: SPARC transfected lysate(34.6 KDa).

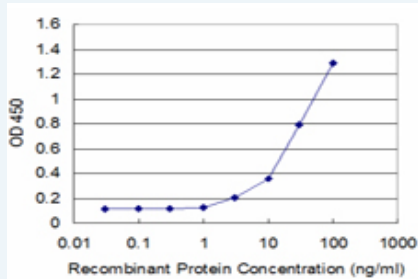
Lane 2: Non-transfected lysate.

[Protocol Download](#)

Western Blot (Recombinant protein)

[Protocol Download](#)

Sandwich ELISA (Recombinant protein)



Detection limit for recombinant GST tagged SPARC is approximately 3ng/ml as a capture antibody.

[Protocol Download](#)

ELISA

Gene Information

Entrez GeneID: [6678](#)

GeneBank [BC004974](#)
Accession#:

Protein [AAH04974.1](#)
Accession#:

Gene Name: SPARC

Gene Alias: ON

Gene Description: secreted protein, acidic, cysteine-rich (osteonectin)

Omim ID: [182120](#)

Gene Ontology: [Hyperlink](#)

Gene Summary: Secreted protein acidic and rich in cysteine/osteonectin/BM40, or SPARC, is a matrix-associated protein that elicits changes in cell shape, inhibits cell-cycle progression, and influences the synthesis of extracellular matrix (ECM) (Bradshaw et al., 2003 [PubMed 12721366]). [supplied by OMIM]

Other Designations: cysteine-rich protein,osteonectin,secreted protein, acidic, cysteine-rich

Related Disease

[Alzheimer Disease](#) [Alzheimer disease](#) [Carcinoma, Hepatocellular](#) [Cardiovascular Diseases](#) [Chorioamnionitis](#) [Diabetes Complications](#) [Diabetes Mellitus, Type 2](#) [Edema Fetal Membranes, Premature Rupture](#) [Genetic Predisposition to Disease](#) [Gingival Overgrowth](#) [Liver Neoplasms](#) [Metabolic Syndrome X](#) [Neoplasms](#) [Obstetric Labor, Premature](#) [Osteoporosis](#) [Ovarian Neoplasms](#) [Pre-Eclampsia](#) [Premature Birth](#)

[... see more](#)