



# SZABO SCANDIC

Part of Europa Biosite

## Produktinformation



Forschungsprodukte & Biochemikalien



Zellkultur & Verbrauchsmaterial



Diagnostik & molekulare Diagnostik



Laborgeräte & Service

Weitere Information auf den folgenden Seiten!  
See the following pages for more information!



### Lieferung & Zahlungsart

siehe unsere [Liefer- und Versandbedingungen](#)

### Zuschläge

- Mindermengenzuschlag
- Trockeneiszuschlag
- Gefahrgutzuschlag
- Expressversand

### SZABO-SCANDIC HandelsgmbH

Quellenstraße 110, A-1100 Wien

T. +43(0)1 489 3961-0

F. +43(0)1 489 3961-7

[mail@szabo-scandic.com](mailto:mail@szabo-scandic.com)

[www.szabo-scandic.com](http://www.szabo-scandic.com)

[linkedin.com/company/szaboscandic](https://www.linkedin.com/company/szaboscandic) 

**SPG7 purified MaxPab rabbit polyclonal antibody (D01P)** MaxPab®

Catalog # : H00006687-D01P

規格 : [ 100 ug ]

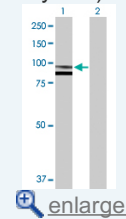
[List All](#)

**Specification**

<b>Product Description:</b>	Rabbit polyclonal antibody raised against a full-length human SPG7 protein.
<b>Immunogen:</b>	SPG7 (NP_003110.1, 1 a.a. ~ 795 a.a) full-length human protein.
<b>Sequence:</b>	MAVLLLLLRALRRGPGGPRPLWGPGPAWSPGFARPGRGRPYMASR PPGDLAEAGGRALQSLQLRLLTPTFEGINGLLLKQHLVQNPVRLWQLLG GTFYFNTSRLKQKNKEKDKSKGKAPEEEDDEEERRRRERDDQMYRERLRT LLVIADVMSLLNALSTSGGSISWVDFVHEMLAKGEVQRVQVVPESDVVEV YLHPGAVVFGRPRALMYRMQVANIDKFEEKLRAAEDELNIEAKDRIPVSY KRTGFFGNALYSVGMTAVGLAILWYVFRLAGMTGREGGFSAFNQLKMA RFTIVDGKMGKGVSFKDVAGMHEAKLEVREFVDYLKSPERFLQLGAKVP KGALLLGGPGCGKTLAKAVATEAQVPFLAMAGPEFVEVIGGLGAARVR SLFKEARARAPCIVYIDEIDAVGKKRSTTMSGFSNTEEEQTLNQLLVEMD GMGTTDHFVILASTNRADILDGALMRPGRDLRHVFIDLPTLQERREIFEQ HLKSLKLTQSSTFYSQLAELTPGFSGADIANICNEAALHAAREGHTSVH TLNFYAVERVLGTAKKSKILSKEEQKVVAFHESGHALVGMWLEHTEAV MKVSIPTRTNAALGFAQMLPRDQHLFTKEQLFERMCMALGGRASEALS FNEVTSQAQDDLKRVTRIAYSMVKQFGMAPGIGPISFPEAQEGLMGIGR RPFSQLQMMMDHEARLLVAKAYRHEKVLQDNLDKALANALLEKEV INYEDIAELIGPPPHGPKMIAPQRWIDAQREKQDLGEEETEETQQPPLG GEEPTWPK
<b>Host:</b>	Rabbit
<b>Reactivity:</b>	Human
<b>Quality Control Testing:</b>	Antibody reactive against mammalian transfected lysate.
<b>Storage Buffer:</b>	In 1x PBS, pH 7.4
<b>Storage Instruction:</b>	Store at -20°C or lower. Aliquot to avoid repeated freezing and thawing.
<b>MSDS:</b>	<a href="#">Download</a>
<b>Datasheet:</b>	<a href="#">Download</a>

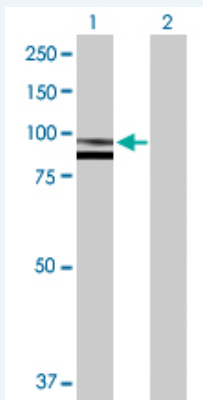
**Application Image**

Western Blot (Transfected lysate)



**Applications**

Western Blot (Transfected lysate)



Western Blot analysis of SPG7 expression in transfected 293T cell line (H00006687-T01) by SPG7 MaxPab polyclonal antibody.

Lane 1: SPG7 transfected lysate(88.20 KDa).  
Lane 2: Non-transfected lysate.

 Protocol Download

## Gene Information

**Entrez GeneID:** [6687](#)

**GeneBank Accession#:** [NM\\_003119.2](#)

**Protein Accession#:** [NP\\_003110.1](#)

**Gene Name:** SPG7

**Gene Alias:** CAR,CMAR,FLJ37308,MGC126331,MGC126332,PGN,SPG5C

**Gene Description:** spastic paraplegia 7 (pure and complicated autosomal recessive)

**Omim ID:** [602783](#), [607259](#)

**Gene Ontology:** [Hyperlink](#)

**Gene Summary:** This gene encodes a nuclear-encoded mitochondrial metalloprotease protein that is a member of the AAA (ATPases associated with a variety of cellular activities) protein family. Members of this protein family share an ATPase domain and have roles in diverse cellular processes including membrane trafficking, intracellular motility, organelle biogenesis, protein folding, and proteolysis. Two transcript variants encoding distinct isoforms have been identified for this gene. Mutations associated with this gene cause autosomal recessive spastic paraplegia 7. [provided by RefSeq]

**Other Designations:** cell adhesion regulator,cell matrix adhesion regulator,paraplegin, isoform 1,spastic paraplegia 7

## Related Disease

[Disease Progression](#) [Genetic Predisposition to Disease](#) [Kidney Failure, Chronic](#) [Motor Neuron Disease](#) [Multiple Sclerosis](#) [Paraparesis, Spastic](#) [Spastic Paraplegia, Hereditary](#)