



SZABO SCANDIC

Part of Europa Biosite

Produktinformation



Forschungsprodukte & Biochemikalien



Zellkultur & Verbrauchsmaterial



Diagnostik & molekulare Diagnostik



Laborgeräte & Service

Weitere Information auf den folgenden Seiten!
See the following pages for more information!



Lieferung & Zahlungsart

siehe unsere [Liefer- und Versandbedingungen](#)

Zuschläge

- Mindermengenzuschlag
- Trockeneiszuschlag
- Gefahrgutzuschlag
- Expressversand

SZABO-SCANDIC HandelsgmbH

Quellenstraße 110, A-1100 Wien

T. +43(0)1 489 3961-0

F. +43(0)1 489 3961-7

mail@szabo-scandic.com

www.szabo-scandic.com

[linkedin.com/company/szaboscandic](https://www.linkedin.com/company/szaboscandic) 



SPI1 purified MaxPab rabbit polyclonal antibody (D01P) MaxPab®

Catalog # : H00006688-D01P

規格 : [100 ug]

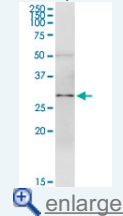
[List All](#)

Specification

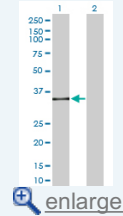
Product Description:	Rabbit polyclonal antibody raised against a full-length human SPI1 protein.
Immunogen:	SPI1 (ENSP00000227163, 1 a.a. ~ 264 a.a) full-length human protein.
Sequence:	MEGFPLVPPPSDELVPYDTDLYQRQTHEYYPYLSSDGESHSDHYWDFH PHHMHSEFESFAENNFTELQSVQPPQLQQLYRHMELEQMHLDTMVP PHPSLGHQVSYLPRMCLQYPSLSPAQSSDEEEGERQSPPLEVSDGEA DGLEPGPGLLPGETGSKKKIRLYQFLLDLLRSGDMKDSIWWWVDKDKGT FQFSSKHKEALHRWGIQKGNRKKMTYQKMARALRNYGKTGEVKKVKK KLTYQFSGEVLGRGGLAERRHPPH
Host:	Rabbit
Reactivity:	Human
Quality Control Testing:	Antibody reactive against mammalian transfected lysate.
Storage Buffer:	In 1x PBS, pH 7.4
Storage Instruction:	Store at -20°C or lower. Aliquot to avoid repeated freezing and thawing.
MSDS:	 Download
Datasheet:	 Download

Application Image

Western Blot (Tissue lysate)

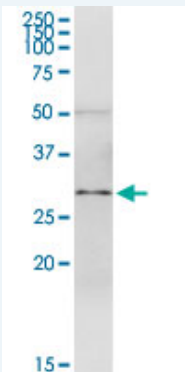


Western Blot (Transfected lysate)



Applications

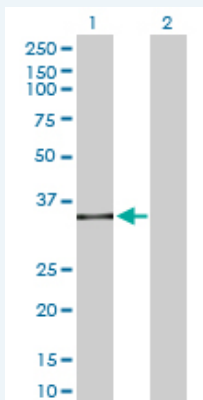
Western Blot (Tissue lysate)



SPI1 MaxPab rabbit polyclonal antibody. Western Blot analysis of SPI1 expression in human stomach.

 [Protocol Download](#)

Western Blot (Transfected lysate)



Western Blot analysis of SPI1 expression in transfected 293T cell line ([H00006688-T02](#)) by SPI1 MaxPab polyclonal antibody.

Lane 1: SPI1 transfected lysate(30.40 KDa).

Lane 2: Non-transfected lysate.

 [Protocol Download](#)

Gene Information

Entrez GeneID: [6688](#)

GeneBank [NM_003120.1](#)

Accession#:

Protein [ENSP00000227163](#)

Accession#:

Gene Name: SPI1

Gene Alias: OF,PU.1,SFPI1,SPI-1,SPI-A

Gene Description: spleen focus forming virus (SFFV) proviral integration oncogene spi1

Omim ID: [165170](#)

Gene Ontology: [Hyperlink](#)

Gene Summary: This gene encodes an ETS-domain transcription factor that activates gene expression during myeloid and B-lymphoid cell development. The nuclear protein binds to a purine-rich sequence known as the PU-box found near the promoters of target genes, and regulates their expression in coordination with other transcription factors and cofactors. The protein can also regulate alternative splicing of target genes. Multiple transcript variants encoding different isoforms have been found for this gene. [provided by RefSeq]

Other Designations: 31 kDa transforming protein,SPI-1 proto-oncogene,hematopoietic transcription factor PU.1

Gene Pathway

[Acute myeloid leukemia Pathways in cancer](#)

Related Disease

[Leukemia, Myeloid, Acute](#)