



SZABO SCANDIC

Part of Europa Biosite

Produktinformation



Forschungsprodukte & Biochemikalien



Zellkultur & Verbrauchsmaterial



Diagnostik & molekulare Diagnostik



Laborgeräte & Service

Weitere Information auf den folgenden Seiten!
See the following pages for more information!



Lieferung & Zahlungsart

siehe unsere [Liefer- und Versandbedingungen](#)

Zuschläge

- Mindermengenzuschlag
- Trockeneiszuschlag
- Gefahrgutzuschlag
- Expressversand

SZABO-SCANDIC HandelsgmbH

Quellenstraße 110, A-1100 Wien

T. +43(0)1 489 3961-0

F. +43(0)1 489 3961-7

mail@szabo-scandic.com

www.szabo-scandic.com

[linkedin.com/company/szaboscandic](https://www.linkedin.com/company/szaboscandic) 

SPI1 monoclonal antibody (M01), clone 1A3

Catalog # : H00006688-M01

規格 : [100 ug]

[List All](#)

Specification

Product Description: Mouse monoclonal antibody raised against a partial recombinant SPI1.

Immunogen: SPI1 (NP_003111, 1 a.a. ~ 120 a.a) partial recombinant protein with GST tag. MW of the GST tag alone is 26 KDa.

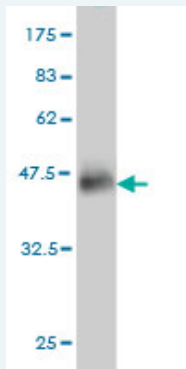
Sequence: MEGFPLVPPPSLVDLVPYDLDLYQRQTHEYYPYLSSDGESHSDHYWDFH
PHIVHSEFESFAENNFTELQSVQPPQLQQLYRHMELQMHVLDTPMVP
PHPSLGHQVSYLPRMCLQYPSLSP

Host: Mouse

Reactivity: Human

Isotype: IgG1 Kappa

Quality Control Testing: Antibody Reactive Against Recombinant Protein.



Western Blot detection against Immunogen (38.94 KDa) .

Storage Buffer: In 1x PBS, pH 7.4

Storage Instruction: Store at -20°C or lower. Aliquot to avoid repeated freezing and thawing.

MSDS: [Download](#)

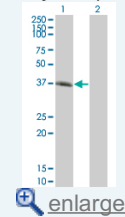
Datasheet: [Download](#)

Applications

Western Blot (Transfected lysate)

Application Image

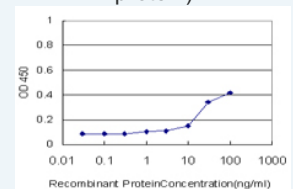
Western Blot (Transfected lysate)



[enlarge](#)

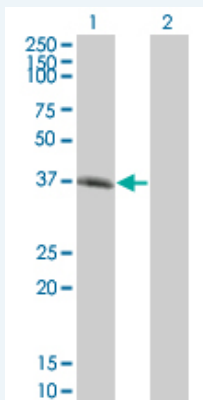
Western Blot (Recombinant protein)

Sandwich ELISA (Recombinant protein)



[enlarge](#)

ELISA



Western Blot analysis of SPI1 expression in transfected 293T cell line by SPI1 monoclonal antibody (M01), clone 1A3.

Lane 1: SPI1 transfected lysate(31.083 KDa).

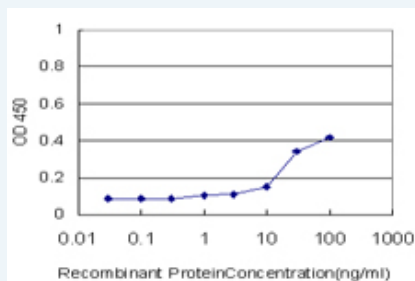
Lane 2: Non-transfected lysate.

[Protocol Download](#)

Western Blot (Recombinant protein)

[Protocol Download](#)

Sandwich ELISA (Recombinant protein)



Detection limit for recombinant GST tagged SPI1 is approximately 10ng/ml as a capture antibody.

[Protocol Download](#)

ELISA

Gene Information

Entrez GeneID: [6688](#)

GeneBank [NM_003120](#)

Accession#:

Protein [NP_003111](#)

Accession#:

Gene Name: SPI1

Gene Alias: OF,PU.1,SFPI1,SPI-1,SPI-A

Gene Description: spleen focus forming virus (SFFV) proviral integration oncogene spi1

Omim ID: [165170](#)

Gene Ontology: [Hyperlink](#)

Gene Summary: This gene encodes an ETS-domain transcription factor that activates gene expression during myeloid and B-lymphoid cell development. The nuclear protein binds to a purine-rich sequence known as the PU-box found near the promoters of target genes, and regulates their expression in coordination with other transcription factors and cofactors.

The protein can also regulate alternative splicing of target genes.
Multiple transcript variants encoding different isoforms have been found for this gene. [provided by RefSeq]

Other Designations: 31 kDa transforming protein,SPI-1 proto-oncogene,hematopoietic transcription factor PU.1

Gene Pathway

[Acute myeloid leukemia Pathways in cancer](#)

Related Disease

[Leukemia, Myeloid, Acute](#)

[服務條款](#) | [隱私權政策](#) | [著作及商標](#) | [網站地圖](#)

©2016 亞諾法生技股份有限公司 Abnova Corporation. 版權所有.