



# SZABO SCANDIC

Part of Europa Biosite

## Produktinformation



Forschungsprodukte & Biochemikalien



Zellkultur & Verbrauchsmaterial



Diagnostik & molekulare Diagnostik



Laborgeräte & Service

Weitere Information auf den folgenden Seiten!  
See the following pages for more information!



### Lieferung & Zahlungsart

siehe unsere [Liefer- und Versandbedingungen](#)

### Zuschläge

- Mindermengenzuschlag
- Trockeneiszuschlag
- Gefahrgutzuschlag
- Expressversand

### SZABO-SCANDIC HandelsgmbH

Quellenstraße 110, A-1100 Wien

T. +43(0)1 489 3961-0

F. +43(0)1 489 3961-7

[mail@szabo-scandic.com](mailto:mail@szabo-scandic.com)

[www.szabo-scandic.com](http://www.szabo-scandic.com)

[linkedin.com/company/szaboscandic](https://www.linkedin.com/company/szaboscandic) 

## SPI1 293T Cell Transient Overexpression Lysate(Denatured)

Catalog # : H00006688-T02

規格 : [ 100 uL ]

[List All](#)

### Specification

**Transfected Cell Line:** 293T

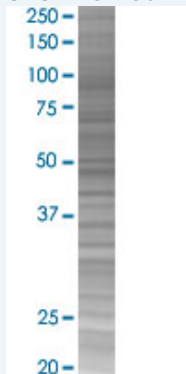
**Plasmid:** pCMV-SPI1 full-length

**Host:** Human

**Theoretical MW (kDa):** 30.4

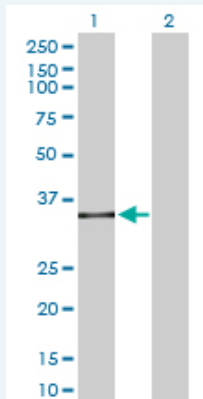
**Quality Control Testing:** Transient overexpression cell lysate was tested with Anti-SPI1 antibody (H00006688-D01P) by Western Blots.

#### SDS-PAGE Gel



SPI1 transfected lysate.

#### Western Blot



Lane 1: SPI1 transfected lysate ( 30.40 KDa)

Lane 2: Non-transfected lysate.

**Storage Buffer:** 1X Sample Buffer (50 mM Tris-HCl, 2% SDS, 10% glycerol, 300 mM 2-mercaptoethanol, 0.01% Bromophenol blue)

**Storage Instruction:** Store at -80°C. Aliquot to avoid repeated freezing and thawing.

**MSDS:**  [Download](#)

### Applications

### Application Image

Western Blot

## Western Blot

### Gene Information

Entrez GeneID: [6688](#)

GeneBank Accession#: [NM\\_003120.1](#)

Protein Accession#: [ENSP00000227163](#)

Gene Name: SPI1

Gene Alias: OF,PU.1,SFPI1,SPI-1,SPI-A

Gene Description: spleen focus forming virus (SFFV) proviral integration oncogene spi1

Omim ID: [165170](#)

Gene Ontology: [Hyperlink](#)

**Gene Summary:** This gene encodes an ETS-domain transcription factor that activates gene expression during myeloid and B-lymphoid cell development. The nuclear protein binds to a purine-rich sequence known as the PU-box found near the promoters of target genes, and regulates their expression in coordination with other transcription factors and cofactors. The protein can also regulate alternative splicing of target genes. Multiple transcript variants encoding different isoforms have been found for this gene. [provided by RefSeq]

Other Designations: 31 kDa transforming protein,SPI-1 proto-oncogene,hematopoietic transcription factor PU.1

### Gene Pathway

[Acute myeloid leukemia Pathways in cancer](#)

### Related Disease

[Leukemia, Myeloid, Acute](#)

[服務條款](#) | [隱私權政策](#) | [著作及商標](#) | [網站地圖](#)

©2016 亞諾法生技股份有限公司 Abnova Corporation. 版權所有.