



# SZABO SCANDIC

Part of Europa Biosite

## Produktinformation



Forschungsprodukte & Biochemikalien



Zellkultur & Verbrauchsmaterial



Diagnostik & molekulare Diagnostik



Laborgeräte & Service

Weitere Information auf den folgenden Seiten!  
See the following pages for more information!



### Lieferung & Zahlungsart

siehe unsere [Liefer- und Versandbedingungen](#)

### Zuschläge

- Mindermengenzuschlag
- Trockeneiszuschlag
- Gefahrgutzuschlag
- Expressversand

### SZABO-SCANDIC HandelsgmbH

Quellenstraße 110, A-1100 Wien

T. +43(0)1 489 3961-0

F. +43(0)1 489 3961-7

[mail@szabo-scandic.com](mailto:mail@szabo-scandic.com)

[www.szabo-scandic.com](http://www.szabo-scandic.com)

[linkedin.com/company/szaboscandic](https://www.linkedin.com/company/szaboscandic) 

## SPP1 (Human) Matched Antibody Pair

Catalog # : H00006696-AP44

規格 : [ 1 Set ]

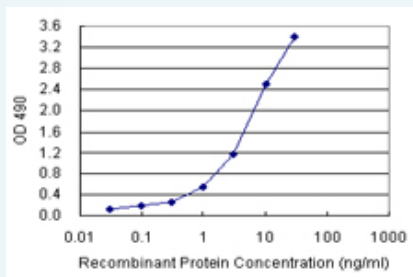
[List All](#)

### Specification

**Product Description:** This antibody pair set comes with matched antibody pair to detect and quantify protein level of human SPP1.

**Reactivity:** Human

**Quality Control Testing:** Standard curve using recombinant protein ( H00006696-P01 ) as an analyte.



Sandwich ELISA detection sensitivity ranging from 0.03 ng/ml to 100 ng/ml.

**Supplied Product:** Antibody pair set content:  
 1. Capture antibody: mouse monoclonal anti-SPP1 (100 ug)  
 2. Detection antibody: biotinylated mouse monoclonal anti-SPP1, IgG2a Kappa (50 ug)  
 \*Reagents are sufficient for at least 3-5 x 96 well plates using recommended protocols.

**Storage Instruction:** Store reagents of the antibody pair set at -20°C or lower. Please aliquot to avoid repeated freeze thaw cycle. Reagents should be returned to -20°C storage immediately after use.

**MSDS:**  [Download](#)

### Applications

ELISA Pair (Recombinant protein)

 [Protocol Download](#)

### Gene Information

**Entrez GeneID:** [6696](#)

**Gene Name:** SPP1

**Gene Alias:** BNSP,BSPI,ETA-1,MGC110940,OPN

**Gene Description:** secreted phosphoprotein 1

**Omim ID:** [166490](#)

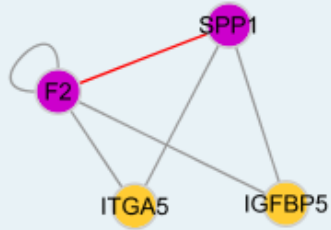
**Gene Ontology:** [Hyperlink](#)

### Application Image

ELISA Pair (Recombinant protein)

**Other Designations:** SPP1/CALPHA1 fusion, bone sialoprotein I, early T-lymphocyte activation 1, osteopontin, osteopontin/immunoglobulin alpha 1 heavy chain constant region fusion protein, secreted phosphoprotein 1 (osteopontin, bone sialoprotein I, early T-lymphocyte activation 1)

### Interactome



### Gene Pathway

[ECM-receptor interaction](#) [Focal adhesion](#) [Toll-like receptor signaling pathway](#)

### Related Disease

[Adenocarcinoma](#) [Alzheimer Disease](#) [Alzheimer disease](#) [Amyotrophic Lateral Sclerosis](#) [Amyotrophic lateral sclerosis](#) [Anoxia](#) [Aortic Aneurysm, Abdominal](#) [Arthritis, Rheumatoid](#) [Asthma](#) [Asthma](#) [Atherosclerosis](#) [Atherosclerosis](#) [Brain Infarction](#) [Brain Ischemia](#) [Calcinosis](#) [Carcinoma, Hepatocellular](#) [Cardiovascular Diseases](#) [Carotid Artery Diseases](#) [Cerebrovascular Disorders](#)

[... see more](#)

[服務條款](#) | [隱私權政策](#) | [著作及商標](#) | [網站地圖](#)

©2016 亞諾法生技股份有限公司 Abnova Corporation. 版權所有.