



SZABO SCANDIC

Part of Europa Biosite

Produktinformation



Forschungsprodukte & Biochemikalien



Zellkultur & Verbrauchsmaterial



Diagnostik & molekulare Diagnostik



Laborgeräte & Service

Weitere Information auf den folgenden Seiten!
See the following pages for more information!



Lieferung & Zahlungsart

siehe unsere [Liefer- und Versandbedingungen](#)

Zuschläge

- Mindermengenzuschlag
- Trockeneiszuschlag
- Gefahrgutzuschlag
- Expressversand

SZABO-SCANDIC HandelsgmbH

Quellenstraße 110, A-1100 Wien

T. +43(0)1 489 3961-0

F. +43(0)1 489 3961-7

mail@szabo-scandic.com

www.szabo-scandic.com

[linkedin.com/company/szaboscandic](https://www.linkedin.com/company/szaboscandic) 

SPP1 purified MaxPab rabbit polyclonal antibody (D01P) MaxPab®

Catalog # : H00006696-D01P

規格 : [100 ug]

[List All](#)

Specification

Product Description: Rabbit polyclonal antibody raised against a full-length human SPP1 protein.

Immunogen: SPP1 (AAH17387.1, 1 a.a. ~ 314 a.a) full-length human protein.

Sequence:
 MRIAVICFCLLGITCAIPVKQADSGSSEEKQLYNKYPDAVATWLNPDPSQ
 KQNLLAPQNAVSSSEETNDFKQETLPSKSNESHDMDDMDEDDDDHVD
 SQDSIDSNDSDDVDDTDDSHQSDESHHSDESDELVTDFPTDLPATEVFT
 PWPTVDTYDGRGDSVYGLRSKSKFRRPDIQYPDATDEDITSHMESE
 ELNGAYKAIPVAQDLNAPSDWDSRGKDSYETSQLDDQSAETHSHKQSR
 LYKRKANDESNEHSDVIDSQELSKVSREFHSHEFHSHEDMLVDPKSKEE
 DKHLKFRISHELDSASSEVN

Host: Rabbit

Reactivity: Human

Quality Control Testing: Antibody reactive against mammalian transfected lysate.

Storage Buffer: In 1x PBS, pH 7.4

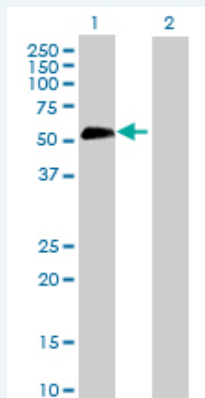
Storage Instruction: Store at -20°C or lower. Aliquot to avoid repeated freezing and thawing.

MSDS:  [Download](#)

Datasheet:  [Download](#)

Applications


Western Blot (Transfected lysate)



Western Blot analysis of SPP1 expression in transfected 293T cell line (H00006696-T01) by SPP1 MaxPab polyclonal antibody.

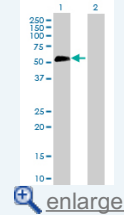
Lane 1: SPP1 transfected lysate(35.40 KDa).

Lane 2: Non-transfected lysate.

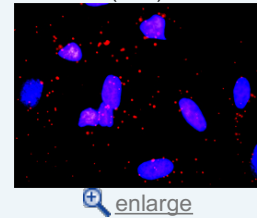
 [Protocol Download](#)

Application Image

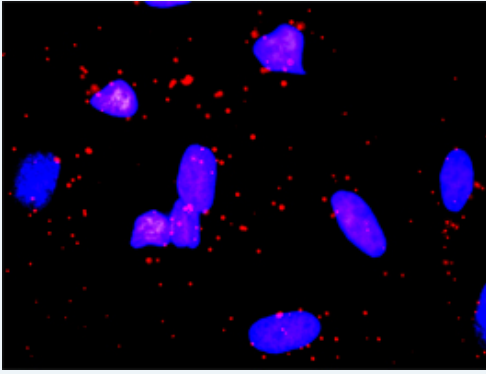
Western Blot (Transfected lysate)



In situ Proximity Ligation Assay (Cell)



In situ Proximity Ligation Assay (Cell)



Proximity Ligation Analysis of protein-protein interactions between SPP1 and F2. HeLa cells were stained with anti-SPP1 rabbit purified polyclonal 1:1200 and anti-F2 mouse monoclonal antibody 1:50. Each red dot represents the detection of protein-protein interaction complex, and nuclei were counterstained with DAPI (blue).

Gene Information

Entrez GeneID: [6696](#)

**GeneBank
Accession#:** [NM_001040058](#)

**Protein
Accession#:** [AAH17387.1](#)

Gene Name: SPP1

Gene Alias: BNSP,BSPI,ETA-1,MGC110940,OPN

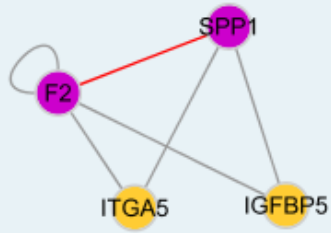
**Gene
Description:** secreted phosphoprotein 1

Omim ID: [166490](#)

Gene Ontology: [Hyperlink](#)

**Other
Designations:** SPP1/CALPHA1 fusion,bone sialoprotein I,early T-lymphocyte activation 1,osteopontin,osteopontin/immunoglobulin alpha 1 heavy chain constant region fusion protein,secreted phosphoprotein 1 (osteopontin, bone sialoprotein I, early T-lymphocyte activation 1)

Interactome



Gene Pathway

[ECM-receptor interaction](#) [Focal adhesion](#) [Toll-like receptor signaling pathway](#)

Related Disease

[Adenocarcinoma](#) [Alzheimer Disease](#) [Alzheimer disease](#) [Amyotrophic Lateral Sclerosis](#)
[Amyotrophic lateral sclerosis](#) [Anoxia](#) [Aortic Aneurysm, Abdominal](#) [Arthritis, Rheumatoid](#)
[Asthma](#) [Asthma](#) [Atherosclerosis](#) [Atherosclerosis](#) [Brain Infarction](#) [Brain Ischemia](#) [Calcinosis](#)
[Carcinoma, Hepatocellular](#) [Cardiovascular Diseases](#) [Carotid Artery Diseases](#)
[Cerebrovascular Disorders](#)

... see more

[服務條款](#) | [隱私權政策](#) | [著作及商標](#) | [網站地圖](#)

©2016 亞諾法生技股份有限公司 Abnova Corporation. 版權所有.