



# SZABO SCANDIC

Part of Europa Biosite

## Produktinformation



Forschungsprodukte & Biochemikalien



Zellkultur & Verbrauchsmaterial



Diagnostik & molekulare Diagnostik



Laborgeräte & Service

Weitere Information auf den folgenden Seiten!  
See the following pages for more information!



### Lieferung & Zahlungsart

siehe unsere [Liefer- und Versandbedingungen](#)

### Zuschläge

- Mindermengenzuschlag
- Trockeneiszuschlag
- Gefahrgutzuschlag
- Expressversand

### SZABO-SCANDIC HandelsgmbH

Quellenstraße 110, A-1100 Wien

T. +43(0)1 489 3961-0

F. +43(0)1 489 3961-7

[mail@szabo-scandic.com](mailto:mail@szabo-scandic.com)

[www.szabo-scandic.com](http://www.szabo-scandic.com)

[linkedin.com/company/szaboscandic](https://www.linkedin.com/company/szaboscandic) 

## SPP1 monoclonal antibody (M10), clone 4F2

Catalog # : H00006696-M10

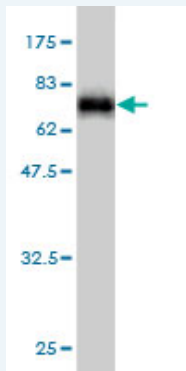
規格 : [ 100 ug ]

[List All](#)

### Specification

<b>Product Description:</b>	Mouse monoclonal antibody raised against a full length recombinant SPP1.
<b>Immunogen:</b>	SPP1 (AAH07016.1, 1 a.a. ~ 300 a.a) full-length recombinant protein with GST tag. MW of the GST tag alone is 26 KDa.
<b>Sequence:</b>	MRIAVICFCLLGITCAIPVKQADSGSSEEKQLYNKYPDVAVATWLNPDPSQ KQNLLAPQTLPSKSNESHDMDDMDEDDDDHVDSDSIDSNDSDDDVD DTDDSHQSDESHHSDESDELVTDFPTDLPADEVFTPVVPTVDTYDGRG DSVYGLRSKSKKFRRPDIQYPDATDEDITSHMESEELNGAYKAIPVAQD LNA PSDWDSRGKDSYETSQLDDQSAETHSHKQSRLYKRKANDESNEHS DVIDSQELSKVSREFHSHEFHSHEDMLVDPKSKEEDKHLKFRISHELESA SSEVN
<b>Host:</b>	Mouse
<b>Reactivity:</b>	Human, Mouse
<b>Isotype:</b>	IgG2b Kappa

**Quality Control Testing:** Antibody Reactive Against Recombinant Protein.



Western Blot detection against Immunogen (58.74 KDa) .

**Storage Buffer:** In 1x PBS, pH 7.4

**Storage Instruction:** Store at -20°C or lower. Aliquot to avoid repeated freezing and thawing.

**MSDS:** [Download](#)

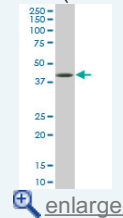
**Datasheet:** [Download](#)

### Applications

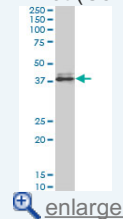
Western Blot (Tissue lysate)

### Application Image

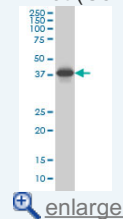
Western Blot (Tissue lysate)



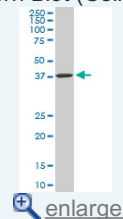
Western Blot (Cell lysate)



Western Blot (Cell lysate)

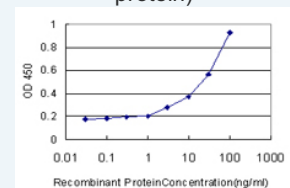


Western Blot (Cell lysate)

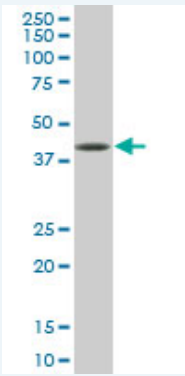


Western Blot (Recombinant protein)


Sandwich ELISA (Recombinant protein)



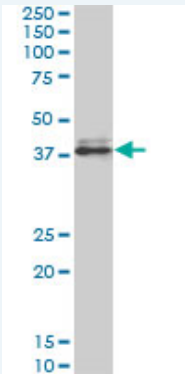
ELISA



SPP1 monoclonal antibody (M10), clone 4F2. Western Blot analysis of SPP1 expression in human stomach.

 [Protocol Download](#)

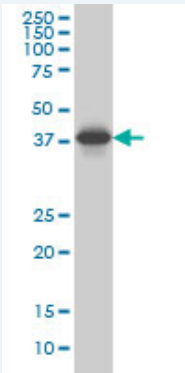
#### Western Blot (Cell lysate)



SPP1 monoclonal antibody (M10), clone 4F2. Western Blot analysis of SPP1 expression in COLO 320 HSR ( Cat # L020V1 ).

 [Protocol Download](#)

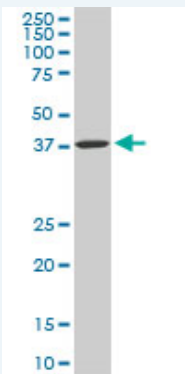
#### Western Blot (Cell lysate)



SPP1 monoclonal antibody (M10), clone 4F2 Western Blot analysis of SPP1 expression in Hela S3 NE ( Cat # L013V3 ).

 [Protocol Download](#)

#### Western Blot (Cell lysate)



SPP1 monoclonal antibody (M10), clone 4F2. Western Blot analysis of SPP1 expression in NIH/3T3(Cat # L018V1 ).

 [Protocol Download](#)

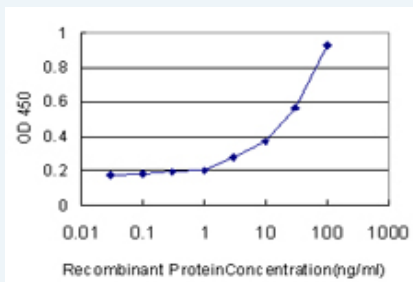
---

### Western Blot (Recombinant protein)

 [Protocol Download](#)

---

### Sandwich ELISA (Recombinant protein)



Detection limit for recombinant GST tagged SPP1 is approximately 1ng/ml as a capture antibody.

 [Protocol Download](#)

---

### ELISA

---

#### Gene Information

**Entrez GeneID:** [6696](#)

**GeneBank** [BC007016](#)

**Accession#:**

**Protein** [AAH07016.1](#)

**Accession#:**

**Gene Name:** SPP1

**Gene Alias:** BNSP,BSPI,ETA-1,MGC110940,OPN

**Gene** secreted phosphoprotein 1

**Description:**

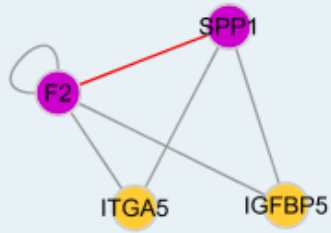
**Omim ID:** [166490](#)

**Gene Ontology:** [Hyperlink](#)

**Other Designations:** SPP1/CALPHA1 fusion,bone sialoprotein I,early T-lymphocyte activation 1,osteopontin,osteopontin/immunoglobulin alpha 1 heavy chain constant region fusion protein,secreted phosphoprotein 1 (osteopontin, bone sialoprotein I, early T-lymphocyte activation 1)

---

#### Interactome



### Gene Pathway

[ECM-receptor interaction](#) [Focal adhesion](#) [Toll-like receptor signaling pathway](#)

### Related Disease

[Adenocarcinoma](#) [Alzheimer Disease](#) [Alzheimer disease](#) [Amyotrophic Lateral Sclerosis](#)  
[Amyotrophic lateral sclerosis](#) [Anoxia](#) [Aortic Aneurysm, Abdominal](#) [Arthritis, Rheumatoid](#)  
[Asthma](#) [Asthma](#) [Atherosclerosis](#) [Atherosclerosis](#) [Brain Infarction](#) [Brain Ischemia](#) [Calcinosis](#)  
[Carcinoma, Hepatocellular](#) [Cardiovascular Diseases](#) [Carotid Artery Diseases](#)  
[Cerebrovascular Disorders](#)

... see more

[服務條款](#) | [隱私權政策](#) | [著作及商標](#) | [網站地圖](#)

©2016 亞諾法生技股份有限公司 Abnova Corporation. 版權所有.