



SZABO SCANDIC

Part of Europa Biosite

Produktinformation



Forschungsprodukte & Biochemikalien



Zellkultur & Verbrauchsmaterial



Diagnostik & molekulare Diagnostik



Laborgeräte & Service

Weitere Information auf den folgenden Seiten!
See the following pages for more information!



Lieferung & Zahlungsart

siehe unsere [Liefer- und Versandbedingungen](#)

Zuschläge

- Mindermengenzuschlag
- Trockeneiszuschlag
- Gefahrgutzuschlag
- Expressversand

SZABO-SCANDIC HandelsgmbH

Quellenstraße 110, A-1100 Wien

T. +43(0)1 489 3961-0

F. +43(0)1 489 3961-7

mail@szabo-scandic.com

www.szabo-scandic.com

[linkedin.com/company/szaboscandic](https://www.linkedin.com/company/szaboscandic) 

SPP1 293T Cell Transient Overexpression Lysate(Denatured)

Catalog # : H00006696-T01

規格 : [100 uL]

[List All](#)

Specification

Transfected Cell Line: 293T

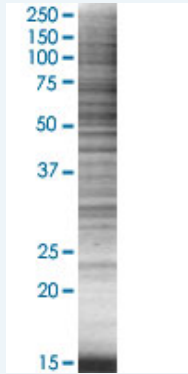
Plasmid: pCMV-SPP1 full-length

Host: Human

Theoretical MW (kDa): 35.4

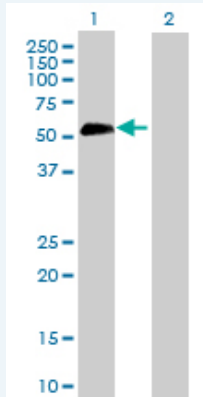
Quality Control Testing: Transient overexpression cell lysate was tested with Anti-SPP1 antibody (H00006696-D01P) by Western Blots.

SDS-PAGE Gel



SPP1 transfected lysate.

Western Blot



Lane 1: SPP1 transfected lysate (35.40 KDa)

Lane 2: Non-transfected lysate.

Storage Buffer: 1X Sample Buffer (50 mM Tris-HCl, 2% SDS, 10% glycerol, 300 mM 2-mercaptoethanol, 0.01% Bromophenol blue)

Storage Instruction: Store at -80°C. Aliquot to avoid repeated freezing and thawing.

MSDS:  [Download](#)

Applications

Western Blot

Gene Information

Entrez GeneID: [6696](#)

GeneBank [NM_001040058](#)
Accession#:

Protein [AAH17387.1](#)
Accession#:

Gene Name: SPP1

Gene Alias: BNSP,BSPI,ETA-1,MGC110940,OPN

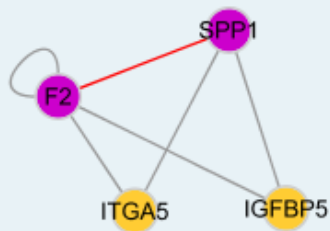
Gene Description: secreted phosphoprotein 1

Omim ID: [166490](#)

Gene Ontology: [Hyperlink](#)

Other Designations: SPP1/CALPHA1 fusion,bone sialoprotein I,early T-lymphocyte activation 1,osteopontin,osteopontin/immunoglobulin alpha 1 heavy chain constant region fusion protein,secreted phosphoprotein 1 (osteopontin, bone sialoprotein I, early T-lymphocyte activation 1)

Interactome



Gene Pathway

[ECM-receptor interaction](#) [Focal adhesion](#) [Toll-like receptor signaling pathway](#)

Related Disease

[Adenocarcinoma](#) [Alzheimer Disease](#) [Alzheimer disease](#) [Amyotrophic Lateral Sclerosis](#)
[Amyotrophic lateral sclerosis](#) [Anoxia](#) [Aortic Aneurysm, Abdominal](#) [Arthritis, Rheumatoid](#)
[Asthma](#) [Asthma](#) [Atherosclerosis](#) [Atherosclerosis](#) [Brain Infarction](#) [Brain Ischemia](#) [Calcinosis](#)
[Carcinoma, Hepatocellular](#) [Cardiovascular Diseases](#) [Carotid Artery Diseases](#)
[Cerebrovascular Disorders](#)

... see more

[服務條款](#) | [隱私權政策](#) | [著作及商標](#) | [網站地圖](#)

©2016 亞諾法生技股份有限公司 Abnova Corporation. 版權所有.