



SZABO SCANDIC

Part of Europa Biosite

Produktinformation



Forschungsprodukte & Biochemikalien



Zellkultur & Verbrauchsmaterial



Diagnostik & molekulare Diagnostik



Laborgeräte & Service

Weitere Information auf den folgenden Seiten!
See the following pages for more information!



Lieferung & Zahlungsart

siehe unsere [Liefer- und Versandbedingungen](#)

Zuschläge

- Mindermengenzuschlag
- Trockeneiszuschlag
- Gefahrgutzuschlag
- Expressversand

SZABO-SCANDIC HandelsgmbH

Quellenstraße 110, A-1100 Wien

T. +43(0)1 489 3961-0

F. +43(0)1 489 3961-7

mail@szabo-scandic.com

www.szabo-scandic.com

[linkedin.com/company/szaboscandic](https://www.linkedin.com/company/szaboscandic) 

SQLE purified MaxPab rabbit polyclonal antibody (D01P) MaxPab®

Catalog # : H00006713-D01P

規格 : [100 ug]

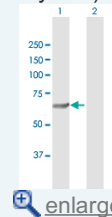
[List All](#)

Specification

| | |
|---------------------------------|---------------------------------------------------------------------------------------------------------------------------------------------------------------------------------------------------------------------------------------------------------------------------------------------------------------------------------------------------------------------------------------------------------------------------------------------------------------------------------------------------------------------------------------------------------------------------------------------------------------------------------------------|
| Product Description: | Rabbit polyclonal antibody raised against a full-length human SQLE protein. |
| Immunogen: | SQLE (NP_003120.2, 1 a.a. ~ 574 a.a) full-length human protein. |
| Sequence: | MWTFGLGIATFTYFYKFKGDFITLANREVLLCVLVFVLSLGLVLSYRCRHRN GGLLGRQQSGSQFALFSDILSGLPFIGFFWAKSPPESENKEQLEARRRR KGTNISETSLIGTAACTSTSSQNDPEVIIVGAGVLGSALAAVLSRDGRKVT VIERDLKEPDRIVGEFLQPGGYHVLKDLGLGDTVEGLDAQVWNGYMIHD QESKSEVQIPYPLSENNQVQSGRAFHHGRFIMSLRKAAMAEPNAKFIEGV VLQLEEDDVVMGVQYKDKETGDIKELHAPLTVVADGLFSKFRKSLVSN KVSVSSHVFGFLMKNAPQFKANHAELILANPSPVLIYQISSSETRVLVDIRG EMPRNLRREYMVEKIYPQIPDHLKEPFLEATDNSHLRSMPASFLPPSSVKK RGVLLLGDAYNMRHPLTGGGMTVAFKDIKLWRKLLKGIPDLYDDAAIFEA KKSFYWARKTSHSFVWNLAQALYELFSATDDSLHQLRKACFLYFKLGGG CVAGPVGLLSVLSPNPLVLIGHFFAVAIYAVYFCFKSEPWITKPRALLSSG AVLYKACSVIFPLIYSEMKYMVH |
| Host: | Rabbit |
| Reactivity: | Human |
| Quality Control Testing: | Antibody reactive against mammalian transfected lysate. |
| Storage Buffer: | In 1x PBS, pH 7.4 |
| Storage Instruction: | Store at -20°C or lower. Aliquot to avoid repeated freezing and thawing. |
| MSDS: | Download |
| Datasheet: | Download |

Application Image

Western Blot (Transfected lysate)

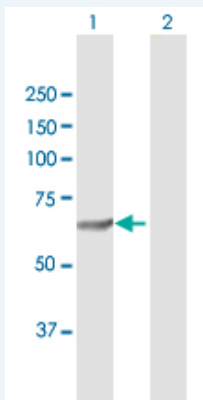


Publication Reference

- [8q24 amplification is associated with Myc expression and prostate cancer progression and is an independent predictor of recurrence after radical prostatectomy.](#)
Fromont G, Godet J, Peyret A, Irani J, Celhay O, Rozet F, Cathelineau X, Cussenot O. Hum Pathol. 2013 Apr 8. pii: S0046-8177(13)00045-2. doi: 10.1016/j.humpath.2013.01.012.

Applications

Western Blot (Transfected lysate)



Western Blot analysis of SQLE expression in transduced 293T cell line ([H00006713-T01](#)) by SQLE MaxPab polyclonal antibody.

Lane 1: SQLE transduced lysate(63.90 KDa).
Lane 2: Non-transduced lysate.

 [Protocol Download](#)

Gene Information

Entrez GeneID: [6713](#)

GeneBank Accession#: [NM_003129.3](#)

Protein Accession#: [NP_003120.2](#)

Gene Name: SQLE

Gene Alias: FLJ30795

Gene Description: squalene epoxidase

Omim ID: [602019](#)

Gene Ontology: [Hyperlink](#)

Gene Summary: Squalene epoxidase catalyzes the first oxygenation step in sterol biosynthesis and is thought to be one of the rate-limiting enzymes in this pathway. [provided by RefSeq]

Other Designations: squalene monooxygenase

Gene Pathway

[Biosynthesis of alkaloids derived from terpenoid and polyketide](#)
[Biosynthesis of plant hormones](#) [Biosynthesis of terpenoids and steroids](#)
[Metabolic pathways](#) [Steroid biosynthesis](#)

Related Disease

[Cardiovascular Diseases](#) [Diabetes Mellitus, Type 2](#) [Edema](#)