



# SZABO SCANDIC

Part of Europa Biosite

## Produktinformation



Forschungsprodukte & Biochemikalien



Zellkultur & Verbrauchsmaterial



Diagnostik & molekulare Diagnostik



Laborgeräte & Service

Weitere Information auf den folgenden Seiten!  
See the following pages for more information!



### Lieferung & Zahlungsart

siehe unsere [Liefer- und Versandbedingungen](#)

### Zuschläge

- Mindermengenzuschlag
- Trockeneiszuschlag
- Gefahrgutzuschlag
- Expressversand

### SZABO-SCANDIC HandelsgmbH

Quellenstraße 110, A-1100 Wien

T. +43(0)1 489 3961-0

F. +43(0)1 489 3961-7

[mail@szabo-scandic.com](mailto:mail@szabo-scandic.com)

[www.szabo-scandic.com](http://www.szabo-scandic.com)

[linkedin.com/company/szaboscandic](https://www.linkedin.com/company/szaboscandic) 

## SQLE 293T Cell Transient Overexpression Lysate(Denatured)

Catalog # : H00006713-T01

規格 : [ 100 uL ]

List All

### Specification

**Transfected Cell Line:** 293T

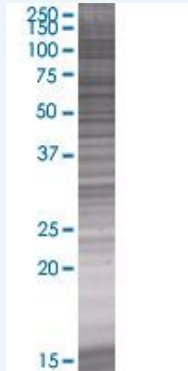
**Plasmid:** pCMV-SQLE full-length

**Host:** Human

**Theoretical MW (kDa):** 63.25

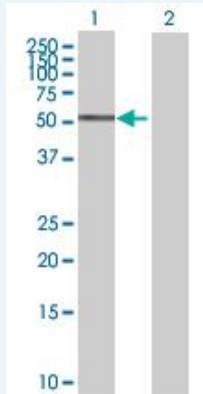
**Quality Control Testing:** Transient overexpression cell lysate was tested with Anti-SQLE antibody (H00006713-B01) by Western Blots.

#### SDS-PAGE Gel



SQLE transfected lysate.

#### Western Blot



Lane 1: SQLE transfected lysate ( 63.25 KDa)

Lane 2: Non-transfected lysate.

**Storage Buffer:** 1X Sample Buffer (50 mM Tris-HCl, 2% SDS, 10% glycerol, 300 mM 2-mercaptoethanol, 0.01% Bromophenol blue)

**Storage Instruction:** Store at -80°C. Aliquot to avoid repeated freezing and thawing.

**MSDS:**  [Download](#)

### Applications

## Western Blot

### Gene Information

Entrez GeneID: [6713](#)

GeneBank Accession#: [NM\\_003129.3](#)

Protein Accession#: [NP\\_003120.2](#)

Gene Name: SQLE

Gene Alias: FLJ30795

Gene Description: squalene epoxidase

Omim ID: [602019](#)

Gene Ontology: [Hyperlink](#)

Gene Summary: Squalene epoxidase catalyzes the first oxygenation step in sterol biosynthesis and is thought to be one of the rate-limiting enzymes in this pathway. [provided by RefSeq]

Other Designations: squalene monooxygenase

### Gene Pathway

[Biosynthesis of alkaloids derived from terpenoid and polyketide](#)  
[Biosynthesis of plant hormones](#) [Biosynthesis of terpenoids and steroids](#)  
[Metabolic pathways](#) [Steroid biosynthesis](#)

### Related Disease

[Cardiovascular Diseases](#) [Diabetes Mellitus, Type 2](#) [Edema](#)