



# SZABO SCANDIC

Part of Europa Biosite

## Produktinformation



Forschungsprodukte & Biochemikalien



Zellkultur & Verbrauchsmaterial



Diagnostik & molekulare Diagnostik



Laborgeräte & Service

Weitere Information auf den folgenden Seiten!  
See the following pages for more information!



### Lieferung & Zahlungsart

siehe unsere [Liefer- und Versandbedingungen](#)

### Zuschläge

- Mindermengenzuschlag
- Trockeneiszuschlag
- Gefahrgutzuschlag
- Expressversand

### SZABO-SCANDIC HandelsgmbH

Quellenstraße 110, A-1100 Wien

T. +43(0)1 489 3961-0

F. +43(0)1 489 3961-7

[mail@szabo-scandic.com](mailto:mail@szabo-scandic.com)

[www.szabo-scandic.com](http://www.szabo-scandic.com)

[linkedin.com/company/szaboscandic](https://www.linkedin.com/company/szaboscandic) 

## SRC MaxPab mouse polyclonal antibody (B01) MaxPab®

Catalog # : H00006714-B01

規格 : [ 50 uL ]

[List All](#)

### Specification

**Product Description:** Mouse polyclonal antibody raised against a full-length human SRC protein.

**Immunogen:** SRC (NP\_005408.1, 1 a.a. ~ 536 a.a) full-length human protein.

**Sequence:**  
 MGSNKSFKPKDASQRRRSLEPAENVHGAGGGAFPASQTPSKPASADGH  
 RGPAAAFAPAAAEPKLFGGFNSSDVTSPQRAGPLAGGVTTFFVALYDY  
 ESRTETDLFSFKKGERLQIVNTEGDWWLAHSLSTGQTGYIPSNYVAPSD  
 SIQAEWYFGKITRRESERLLLNAENPRGTFVRESETTKGAYCLSVSDF  
 DNAKGLNVKHYKIRKLDSSGGFYITSRTQFNSLQQLVAYYSKHADGLCHRL  
 TTVCPSTKPKQTQGLAKDAWEIPRESLRLEVKLGQGCFCGEVWMGTWNG  
 TTRVAIKTLKPGTMSPEAFLQEAQVMKKLRHEKLVQLYAVVSEPIYVTE  
 YMSKGSLLDFLKGETGKYLRLPQLVDMAAQIASGMAYVERMNYVHRDL  
 RAANILVGENLVCKVADFGLARLIEDNEYTARQGAKFPIKWTAPEAALYG  
 RFTIKSDVVSFGILLTELTTKGRVPYPGMVNREVLDQVERGYRMPCPPE  
 CPESLHDLMCQCWRKEPEERPTFEYLQAFLEDYFTSTEPQYQGENL

**Host:** Mouse

**Reactivity:** Human

**Quality Control Testing:** Antibody reactive against mammalian transfected lysate.

**Storage Buffer:** No additive

**Storage Instruction:** Store at -20°C or lower. Aliquot to avoid repeated freezing and thawing.

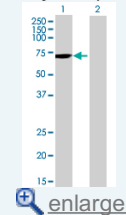
**Note:** For IHC and IF applications, antibody purification with Protein A will be needed prior to use.

**MSDS:** [Download](#)

**Datasheet:** [Download](#)

### Application Image

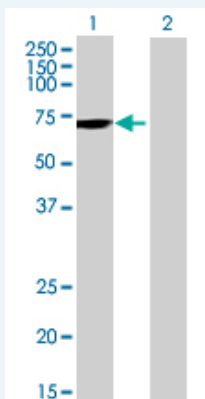
Western Blot (Transfected lysate)



[enlarge](#)

### Applications

Western Blot (Transfected lysate)



Western Blot analysis of SRC expression in transfected 293T cell line (H00006714-T01) by

SRC MaxPab polyclonal antibody.

Lane 1: SRC transfected lysate(58.96 KDa).

Lane 2: Non-transfected lysate.

 [Protocol Download](#)

---

## Gene Information

---

**Entrez GeneID:** [6714](#)

**GeneBank** [NM\\_005417.3](#)

**Accession#:**

**Protein** [NP\\_005408.1](#)

**Accession#:**

**Gene Name:** SRC

**Gene Alias:** ASV, SRC1, c-SRC, p60-Src

**Gene Description:** v-src sarcoma (Schmidt-Ruppin A-2) viral oncogene homolog (avian)

**Omim ID:** [190090](#)

**Gene Ontology:** [Hyperlink](#)

**Gene Summary:** This gene is highly similar to the v-src gene of Rous sarcoma virus. This proto-oncogene may play a role in the regulation of embryonic development and cell growth. The protein encoded by this gene is a tyrosine-protein kinase whose activity can be inhibited by phosphorylation by c-SRC kinase. Mutations in this gene could be involved in the malignant progression of colon cancer. Two transcript variants encoding the same protein have been found for this gene. [provided by RefSeq]

**Other Designations:** OTTHUMP00000174476, OTTHUMP00000174477, proto-oncogene tyrosine-protein kinase SRC, protooncogene SRC, Rous sarcoma, tyrosine kinase pp60c-src, tyrosine-protein kinase SRC-1

---

## Gene Pathway

---

[Adherens junction](#) [Endocytosis](#) [Epithelial cell signaling in Helicobacter pylori infection](#)  
[ErbB signaling pathway](#) [Focal adhesion](#) [Gap junction](#) [GnRH signaling pathway](#)  
[Tight junction](#) [VEGF signaling pathway](#)

---

## Related Disease

---

[Genetic Predisposition to Disease](#) [HIV Infections](#) [Thyroid Neoplasms](#)