



# SZABO SCANDIC

Part of Europa Biosite

## Produktinformation



Forschungsprodukte & Biochemikalien



Zellkultur & Verbrauchsmaterial



Diagnostik & molekulare Diagnostik



Laborgeräte & Service

Weitere Information auf den folgenden Seiten!  
See the following pages for more information!



### Lieferung & Zahlungsart

siehe unsere [Liefer- und Versandbedingungen](#)

### Zuschläge

- Mindermengenzuschlag
- Trockeneiszuschlag
- Gefahrgutzuschlag
- Expressversand

### SZABO-SCANDIC HandelsgmbH

Quellenstraße 110, A-1100 Wien

T. +43(0)1 489 3961-0

F. +43(0)1 489 3961-7

[mail@szabo-scandic.com](mailto:mail@szabo-scandic.com)

[www.szabo-scandic.com](http://www.szabo-scandic.com)

[linkedin.com/company/szaboscandic](https://www.linkedin.com/company/szaboscandic) 

**SRC purified MaxPab mouse polyclonal antibody (B01P)** MaxPab®

Catalog # : H00006714-B01P

規格 : [ 50 ug ]

[List All](#)

**Specification**

**Product Description:** Mouse polyclonal antibody raised against a full-length human SRC protein.

**Immunogen:** SRC (NP\_005408.1, 1 a.a. ~ 536 a.a) full-length human protein.

**Sequence:**  
MGSNKSQPKDASQRRRSLEPAENVHGAGGGAFPASQTPSKPASADGH  
RGPSAAFAPAAAEPKLFGGFNSSDVTSPQRAGPLAGGVTTFFVALYDY  
ESRTETDLFSFKKGERLQIVNTEGDWWLAHSLSTGQTGYIPSNYVAPSD  
SIQAEEWYFGKITRRESERLLLNAENPRGTFVRESETTKGAYCLSVSDF  
DNAKGLNVKHYKIRKLDSSGGFYITSRTQFNLSLQQLVAYYSKHADGLCHRL  
TTVCPTSKPQTQGLAKDAWEIPRESLRLEVKLGQGCFCGEVWMGTWNG  
TTRVAIKTLKPGTMSPEAFLQEAQVMKKLRHEKLVQLYAVVSEPIYVTE  
YMSKGSLLDFLKGETGKYLRPLQVDMAAQIASGMAYVERMNYVHRDL  
RAANILVGENLVCKVADFGLARLIEDNEYTARQGAKFPIKWTAPEAALYG  
RFTIKSDVVSFGILLTELTTKGRVPYPGMVNREVLQDQVERGYRMPCPPE  
CPESLHDLMCQCWRKEPEERPTFEYLQAFLEDYFTSTEPQYQGENL

**Host:** Mouse

**Reactivity:** Human

**Quality Control Testing:** Antibody reactive against mammalian transfected lysate.

**Storage Buffer:** In 1x PBS, pH 7.4

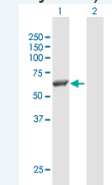
**Storage Instruction:** Store at -20°C or lower. Aliquot to avoid repeated freezing and thawing.


**MSDS:**  [Download](#)

**Datasheet:**  [Download](#)

**Application Image**

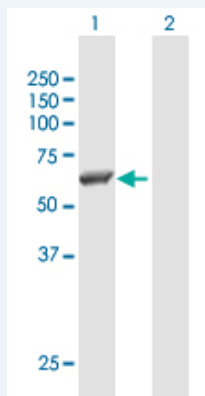
Western Blot (Transfected lysate)



 [enlarge](#)

**Applications**

Western Blot (Transfected lysate)



Western Blot analysis of SRC expression in transfected 293T cell line (H00006714-T01) by SRC MaxPab polyclonal antibody.

Lane 1: SRC transfected lysate(58.96 KDa).

## Gene Information

---

**Entrez GeneID:** [6714](#)

**GeneBank  
Accession#:** [NM\\_005417.3](#)

**Protein  
Accession#:** [NP\\_005408.1](#)

**Gene Name:** SRC

**Gene Alias:** ASV, SRC1, c-SRC, p60-Src

**Gene  
Description:** v-src sarcoma (Schmidt-Ruppin A-2) viral oncogene homolog (avian)

**Omim ID:** [190090](#)

**Gene Ontology:** [Hyperlink](#)

**Gene Summary:** This gene is highly similar to the v-src gene of Rous sarcoma virus. This proto-oncogene may play a role in the regulation of embryonic development and cell growth. The protein encoded by this gene is a tyrosine-protein kinase whose activity can be inhibited by phosphorylation by c-SRC kinase. Mutations in this gene could be involved in the malignant progression of colon cancer. Two transcript variants encoding the same protein have been found for this gene. [provided by RefSeq]

**Other  
Designations:** OTTHUMP00000174476, OTTHUMP00000174477, proto-oncogene tyrosine-protein kinase SRC, protooncogene SRC, Rous sarcoma, tyrosine kinase pp60c-src, tyrosine-protein kinase SRC-1

## Gene Pathway

---

[Adherens junction](#) [Endocytosis](#) [Epithelial cell signaling in Helicobacter pylori infection](#)  
[ErbB signaling pathway](#) [Focal adhesion](#) [Gap junction](#) [GnRH signaling pathway](#)  
[Tight junction](#) [VEGF signaling pathway](#)

## Related Disease

---

[Genetic Predisposition to Disease](#) [HIV Infections](#) [Thyroid Neoplasms](#)