



# SZABO SCANDIC

Part of Europa Biosite

## Produktinformation



Forschungsprodukte & Biochemikalien



Zellkultur & Verbrauchsmaterial



Diagnostik & molekulare Diagnostik



Laborgeräte & Service

Weitere Information auf den folgenden Seiten!  
See the following pages for more information!



### Lieferung & Zahlungsart

siehe unsere [Liefer- und Versandbedingungen](#)

### Zuschläge

- Mindermengenzuschlag
- Trockeneiszuschlag
- Gefahrgutzuschlag
- Expressversand

### SZABO-SCANDIC HandelsgmbH

Quellenstraße 110, A-1100 Wien

T. +43(0)1 489 3961-0

F. +43(0)1 489 3961-7

[mail@szabo-scandic.com](mailto:mail@szabo-scandic.com)

[www.szabo-scandic.com](http://www.szabo-scandic.com)

[linkedin.com/company/szaboscandic](https://www.linkedin.com/company/szaboscandic) 

## SREBF2 polyclonal antibody (A01)

Catalog # : H00006721-A01

規格 : [ 50 uL ]

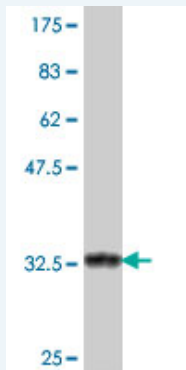
[List All](#)

### Specification

<b>Product Description:</b>	Mouse polyclonal antibody raised against a partial recombinant SREBF2.
<b>Immunogen:</b>	SREBF2 (AAH56158, 801 a.a. ~ 900 a.a) partial recombinant protein with GST tag.
<b>Sequence:</b>	QAFCKNLLERAIESLVKPKAKKKAGDQEEESCEFSSALEYLKLLHSFVDS VGVMSPPLSRSSVLKSALGPDICRWWTSAITVAISWLQGDDAAVRSHT
<b>Host:</b>	Mouse
<b>Reactivity:</b>	Human

**Quality Control** Antibody Reactive Against Recombinant Protein.

**Testing:**



Western Blot detection against Immunogen (37 KDa) .

**Storage Buffer:** 50 % glycerol

**Storage Instruction:** Store at -20°C or lower. Aliquot to avoid repeated freezing and thawing.

**MSDS:** [Download](#)

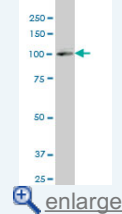
**Datasheet:** [Download](#)

### Applications

Western Blot (Cell lysate)

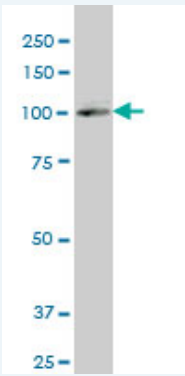
### Application Image

Western Blot (Cell lysate)



Western Blot (Recombinant protein)

ELISA



SREBF2 polyclonal antibody (A01), Lot # 051213JC01 Western Blot analysis of SREBF2 expression in IMR-32 ( Cat # L008V1 ).

 [Protocol Download](#)

#### Western Blot (Recombinant protein)

 [Protocol Download](#)

#### ELISA

#### Gene Information

**Entrez GeneID:** [6721](#)

**GeneBank Accession#:** [BC056158](#)

**Protein Accession#:** [AAH56158](#)

**Gene Name:** SREBF2

**Gene Alias:** SREBP2,bHLHd2

**Gene Description:** sterol regulatory element binding transcription factor 2

**Omim ID:** [600481](#)

**Gene Ontology:** [Hyperlink](#)

**Gene Summary:** This gene encodes a ubiquitously expressed transcription factor that controls cholesterol homeostasis by stimulating transcription of sterol-regulated genes. The encoded protein contains a basic helix-loop-helix-leucine zipper (bHLH-Zip) domain. [provided by RefSeq]

**Other Designations:** OTTHUMP00000028740,sterol regulatory element-binding protein 2,sterol regulatory element-binding transcription factor 2

#### Related Disease

[Alzheimer Disease](#) [Atherosclerosis](#) [Atherosclerosis](#) [Brain Ischemia](#) [Calcinosis](#) [Cardiovascular Diseases](#) [Cerebrovascular Accident](#) [Coronary Artery Disease](#) [Coronary Disease](#) [Dementia](#) [Dementia, Vascular](#) [Diabetes Mellitus, Type 2](#) [Edema](#) [Femur Head Necrosis](#) [Genetic Predisposition to Disease](#) [Hypercholesterolemia](#) [Hyperlipidemias](#) [Hypertension](#) [Metabolic Syndrome X](#)

... see more