



SZABO SCANDIC

Part of Europa Biosite

Produktinformation



Forschungsprodukte & Biochemikalien



Zellkultur & Verbrauchsmaterial



Diagnostik & molekulare Diagnostik



Laborgeräte & Service

Weitere Information auf den folgenden Seiten!
See the following pages for more information!



Lieferung & Zahlungsart

siehe unsere [Liefer- und Versandbedingungen](#)

Zuschläge

- Mindermengenzuschlag
- Trockeneiszuschlag
- Gefahrgutzuschlag
- Expressversand

SZABO-SCANDIC HandelsgmbH

Quellenstraße 110, A-1100 Wien

T. +43(0)1 489 3961-0

F. +43(0)1 489 3961-7

mail@szabo-scandic.com

www.szabo-scandic.com

[linkedin.com/company/szaboscandic](https://www.linkedin.com/company/szaboscandic) 



SRF monoclonal antibody (M05), clone 4D2

Catalog # : H00006722-M05

規格 : [100 ug]

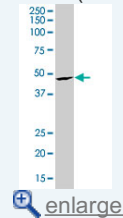
List All

Specification

Product Description:	Mouse monoclonal antibody raised against a full-length recombinant SRF.
Immunogen:	SRF (NP_003122, 244 a.a. ~ 332 a.a) full-length recombinant protein with GST tag. MW of the GST tag alone is 26 KDa.
Sequence:	TDLTYQVSESDSSGETKDTLKPFTVTNLPGTTSTIQTAPSTSTMQVS SGPSFPITNYLAPVSASVSPSAVSSANGTVLKSTGSGPV
Host:	Mouse
Reactivity:	Human
Isotype:	IgG2a Kappa
Quality Control Testing:	Antibody Reactive Against Recombinant Protein.
Storage Buffer:	In 1x PBS, pH 7.4
Storage Instruction:	Store at -20°C or lower. Aliquot to avoid repeated freezing and thawing.
MSDS:	 Download
Datasheet:	 Download

Application Image

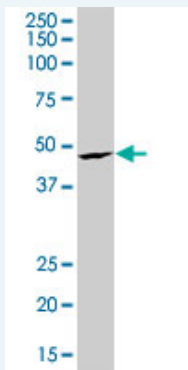
Western Blot (Cell lysate)



ELISA

Applications

Western Blot (Cell lysate)



SRF monoclonal antibody (M05), clone 4D2. Western Blot analysis of SRF expression in Hela S3 NE (Cat # L013V3).

 [Protocol Download](#)

ELISA

Gene Information

Entrez GeneID: [6722](#)

**GeneBank
Accession#:** [NM_003131](#)

**Protein
Accession#:** [NP_003122](#)

Gene Name: SRF

Gene Alias: MCM1

**Gene
Description:** serum response factor (c-fos serum response element-binding transcription factor)

Omim ID: [600589](#)

Gene Ontology: [Hyperlink](#)

Gene Summary: This gene encodes a ubiquitous nuclear protein that stimulates both cell proliferation and differentiation. It is a member of the MADS (MCM1, Agamous, Deficiens, and SRF) box superfamily of transcription factors. This protein binds to the serum response element (SRE) in the promoter region of target genes. This protein regulates the activity of many immediate-early genes, for example c-fos, and thereby participates in cell cycle regulation, apoptosis, cell growth, and cell differentiation. This gene is the downstream target of many pathways; for example, the mitogen-activated protein kinase pathway (MAPK) that acts through the ternary complex factors (TCFs). [provided by RefSeq]

**Other
Designations:** OTTHUMP00000039820

Gene Pathway

[MAPK signaling pathway](#)

Related Disease

[Alzheimer Disease](#) [Alzheimer disease](#) [Cardiovascular Diseases](#) [Diabetes Complications](#)
[Diabetes Mellitus, Type 2](#) [Edema](#) [Metabolic Syndrome X](#) [Neoplasms](#) [Osteoporosis](#)
[Tobacco Use Disorder](#)