



SZABO SCANDIC

Part of Europa Biosite

Produktinformation



Forschungsprodukte & Biochemikalien



Zellkultur & Verbrauchsmaterial



Diagnostik & molekulare Diagnostik



Laborgeräte & Service

Weitere Information auf den folgenden Seiten!
See the following pages for more information!



Lieferung & Zahlungsart

siehe unsere [Liefer- und Versandbedingungen](#)

Zuschläge

- Mindermengenzuschlag
- Trockeneiszuschlag
- Gefahrgutzuschlag
- Expressversand

SZABO-SCANDIC HandelsgmbH

Quellenstraße 110, A-1100 Wien

T. +43(0)1 489 3961-0

F. +43(0)1 489 3961-7

mail@szabo-scandic.com

www.szabo-scandic.com

[linkedin.com/company/szaboscandic](https://www.linkedin.com/company/szaboscandic) 

SRPK1 monoclonal antibody (M01), clone 6H5

Catalog # : H00006732-M01

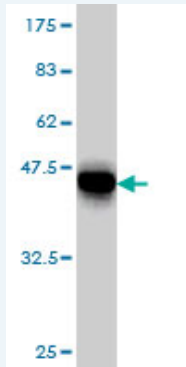
規格 : [100 ug]

[List All](#)

Specification

Product Description:	Mouse monoclonal antibody raised against a partial recombinant SRPK1.
Immunogen:	SRPK1 (AAH38292, 371 a.a. ~ 470 a.a) partial recombinant protein with GST tag. MW of the GST tag alone is 26 KDa.
Sequence:	NETLRHKEDLHNANDCDVQNLNQESSFLSSQNGDSSTSQETDSCPTITS EVSDTMVCQSSSTVGQSFSEQHISQLQESIRAEIPCEDEQEHEHNGPLD NK
Host:	Mouse
Reactivity:	Human
Isotype:	IgG1 Kappa

Quality Control Testing: Antibody Reactive Against Recombinant Protein.



Storage Buffer: In 1x PBS, pH 7.4

Storage Instruction: Store at -20°C or lower. Aliquot to avoid repeated freezing and thawing.

MSDS: [Download](#)

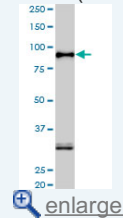
Datasheet: [Download](#)

Applications

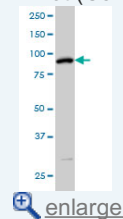
Western Blot (Cell lysate)

Application Image

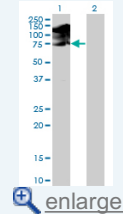
Western Blot (Cell lysate)



Western Blot (Cell lysate)

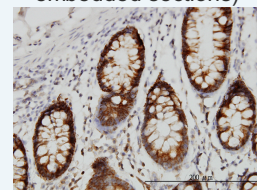


Western Blot (Transfected lysate)

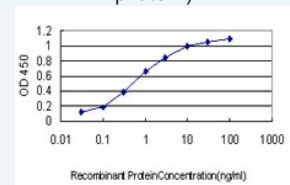


Western Blot (Recombinant protein)

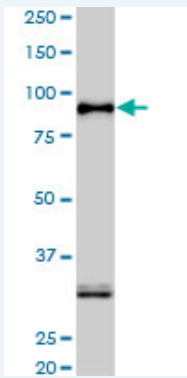
Immunohistochemistry (Formalin/PFA-fixed paraffin-embedded sections)



Sandwich ELISA (Recombinant protein)



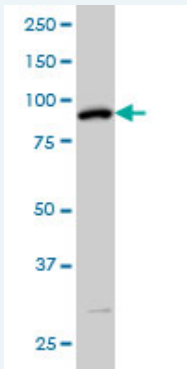
ELISA



SRPK1 monoclonal antibody (M01), clone 6H5. Western Blot analysis of SRPK1 expression in HepG2 (Cat # L019V1).

 [Protocol Download](#)

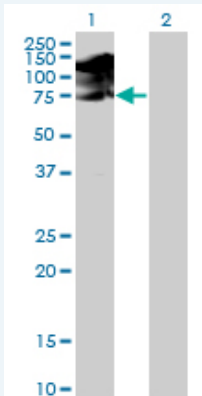
Western Blot (Cell lysate)



SRPK1 monoclonal antibody (M01), clone 6H5 Western Blot analysis of SRPK1 expression in IMR-32 (Cat # L008V1).

 [Protocol Download](#)

Western Blot (Transfected lysate)



Western Blot analysis of SRPK1 expression in transfected 293T cell line by SRPK1 monoclonal antibody (M01), clone 6H5.

Lane 1: SRPK1 transfected lysate(74.3 KDa).

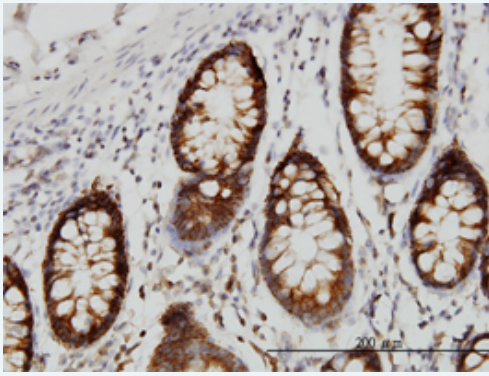
Lane 2: Non-transfected lysate.

 [Protocol Download](#)

Western Blot (Recombinant protein)

 [Protocol Download](#)

Immunohistochemistry (Formalin/PFA-fixed paraffin-embedded sections)

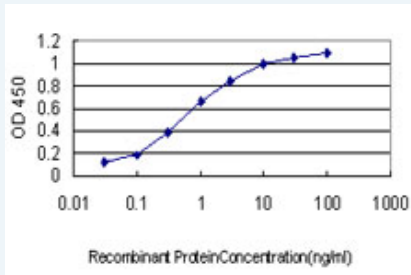


[enlarge this image](#)

Immunoperoxidase of monoclonal antibody to SRPK1 on formalin-fixed paraffin-embedded human colon. [antibody concentration 1 ug/ml]

[Protocol Download](#)

Sandwich ELISA (Recombinant protein)



Detection limit for recombinant GST tagged SRPK1 is approximately 0.03ng/ml as a capture antibody.

[Protocol Download](#)

ELISA

Gene Information

Entrez GeneID: [6732](#)

GeneBank Accession#: [BC038292](#)

Protein Accession#: [AAH38292](#)

Gene Name: SRPK1

Gene Alias: SFRSK1

Gene Description: SFRS protein kinase 1

Omim ID: [601939](#)

Gene Ontology: [Hyperlink](#)

Gene Summary: This gene encodes a serine/arginine protein kinase specific for the SR (serine/arginine-rich domain) family of splicing factors. The protein localizes to the nucleus and the cytoplasm. It is thought to play a role in regulation of both constitutive and alternative splicing by regulating intracellular localization of splicing factors. A second alternatively spliced transcript variant for this gene has been described, but its full length nature has not been determined. [provided by RefSeq]

Other Designations: SR protein kinase 1

Related Disease

