



SZABO SCANDIC

Part of Europa Biosite

Produktinformation



Forschungsprodukte & Biochemikalien



Zellkultur & Verbrauchsmaterial



Diagnostik & molekulare Diagnostik



Laborgeräte & Service

Weitere Information auf den folgenden Seiten!
See the following pages for more information!



Lieferung & Zahlungsart

siehe unsere [Liefer- und Versandbedingungen](#)

Zuschläge

- Mindermengenzuschlag
- Trockeneiszuschlag
- Gefahrgutzuschlag
- Expressversand

SZABO-SCANDIC HandelsgmbH

Quellenstraße 110, A-1100 Wien

T. +43(0)1 489 3961-0

F. +43(0)1 489 3961-7

mail@szabo-scandic.com

www.szabo-scandic.com

[linkedin.com/company/szaboscandic](https://www.linkedin.com/company/szaboscandic) 

SRPR purified MaxPab mouse polyclonal antibody (B02P) MaxPab®

Catalog # : H00006734-B02P

規格 : [50 ug]

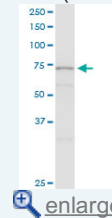
[List All](#)

Specification

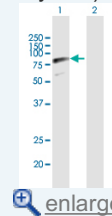
Product Description:	Mouse polyclonal antibody raised against a full-length human SRPR protein.
Immunogen:	SRPR (NP_003130.2, 1 a.a. ~ 638 a.a) full-length human protein.
Sequence:	MLDFFTIFSKGGLVWCFQGVSDSCTGPVNALIRSVLLQERGGNNSFTH EALTLKYKLDNQFELVFVGFQKILTLTYVDKLIIDVHRLF RDKYRTEIQQ QSALSLLNGTFDFQNDFLRLLREAEESKIRAPTTMKKFEDSEKAKKPVR SMIETRGEKPKEKAKNSKKKGAKKEGSDGPLATSKPVP AEKSGLPVGPE NGVELSKEELIRRKREEFIQKHGRGMEKSNKSTKSDAPKEKGGKAPRW ELGGCANKEVLDYSTPTTNGTPEAALSEDINLIRGTGSGGQLQDLDCSS SDDEGAAQNSTKPSATKGTGGMFGMLKGLVGSKLSREDMESVLDK MRDHLIAKNVAADIAVQLCESVANKLEGKVMGTFSTVTSTVKQALQESLV QILQPQRVDMLRDIMDAQRRQRPYVVTFCGVNGVGKSTNLAKISFWLL ENGFSVLIACDTRFRAGAVEQLRTHTRRLSALHPPEKHGGRTMVQLFEK GYGKDAAGIAMEAIAFARNQGFVVLDVDTAGRMQDNAPLMTALAKLITVN TPDLVLFVGEALVGNEAVDQLVKFNRLADHSMAQTPRLIDGIVLTKFDTI DDKVGAAISMITYITSKPIVFGVTGQTYCDLRS LNAKAWAALMKA
Host:	Mouse
Reactivity:	Human
Quality Control Testing:	Antibody reactive against mammalian transfected lysate.
Storage Buffer:	In 1x PBS, pH 7.4
Storage Instruction:	Store at -20°C or lower. Aliquot to avoid repeated freezing and thawing.
MSDS:	Download
Datasheet:	Download

Application Image

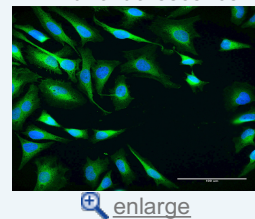
Western Blot (Tissue lysate)



Western Blot (Transfected lysate)

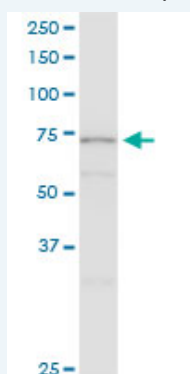


Immunofluorescence



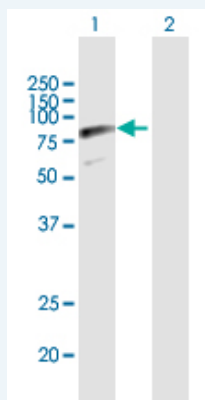
Applications

Western Blot (Tissue lysate)



SRPR MaxPab polyclonal antibody. Western Blot analysis of SRPR expression in human pancreas.

Western Blot (Transfected lysate)

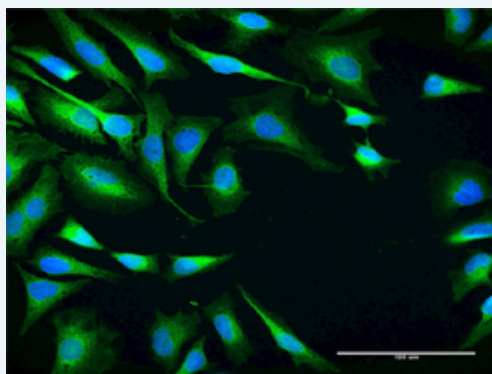



Western Blot analysis of SRPR expression in transfected 293T cell line ([H00006734-T03](#)) by SRPR MaxPab polyclonal antibody.

Lane 1: SRPR transfected lysate(69.80 KDa).

Lane 2: Non-transfected lysate.

Immunofluorescence



 enlarge this image

Immunofluorescence of purified MaxPab antibody to SRPR on HeLa cell. [antibody concentration 10 ug/ml]

Gene Information

Entrez GeneID: [6734](#)

GeneBank [NM_003139.2](#)
Accession#:

Protein [NP_003130.2](#)
Accession#:

Gene Name: SRPR

Gene Alias: DP,MGC17355,MGC3650,MGC9571,SRP-alpha,Sralpha

Gene Description: signal recognition particle receptor (docking protein)

Omim ID: [182180](#)

Gene Ontology: [Hyperlink](#)

Other Designations: docking protein,signal recognition particle receptor

