



SZABO SCANDIC

Part of Europa Biosite

Produktinformation



Forschungsprodukte & Biochemikalien



Zellkultur & Verbrauchsmaterial



Diagnostik & molekulare Diagnostik



Laborgeräte & Service

Weitere Information auf den folgenden Seiten!
See the following pages for more information!



Lieferung & Zahlungsart

siehe unsere [Liefer- und Versandbedingungen](#)

Zuschläge

- Mindermengenzuschlag
- Trockeneiszuschlag
- Gefahrgutzuschlag
- Expressversand

SZABO-SCANDIC HandelsgmbH

Quellenstraße 110, A-1100 Wien

T. +43(0)1 489 3961-0

F. +43(0)1 489 3961-7

mail@szabo-scandic.com

www.szabo-scandic.com

[linkedin.com/company/szaboscandic](https://www.linkedin.com/company/szaboscandic) 

SRY purified MaxPab mouse polyclonal antibody (B01P) MaxPab®

Catalog # : H00006736-B01P

規格 : [50 ug]

[List All](#)

Specification

Product Description: Mouse polyclonal antibody raised against a full-length human SRY protein.

Immunogen: SRY (NP_003131.1, 1 a.a. ~ 204 a.a) full-length human protein.

Sequence:
 MQSYASAMLSVFNSSDDYSPAVQENIPALRRSSSFLCTESCNSKYQCETG
 ENSKGNVQDRVKRPMAFIVWSRDQRRKMALENPRMRNSEISKQLGYQ
 WKMLTEAEKWPFQEAQKLQAMHREKYPNYKYRPRRKAKMLPKNCSSL
 PADPASVLCSEVQLDNRLYRDDCTKATHSRMEHQLGHLPPINAASSPQQ
 RDRYSHWTKL

Host: Mouse

Reactivity: Human

Quality Control Testing: Antibody reactive against mammalian transfected lysate.

Storage Buffer: In 1x PBS, pH 7.4

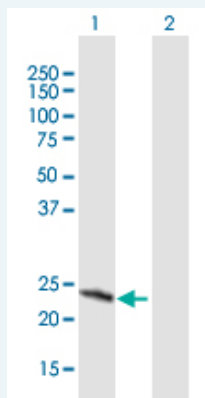
Storage Instruction: Store at -20°C or lower. Aliquot to avoid repeated freezing and thawing.

MSDS:  [Download](#)

Datasheet:  [Download](#)

Applications


Western Blot (Transfected lysate)



Western Blot analysis of SRY expression in transfected 293T cell line (H00006736-T01) by SRY MaxPab polyclonal antibody.

Lane 1: SRY transfected lysate(22.44 KDa).

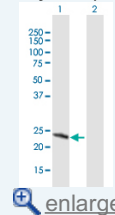
Lane 2: Non-transfected lysate.


 [Protocol Download](#)

Immunofluorescence

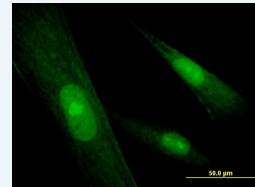
Application Image


Western Blot (Transfected lysate)

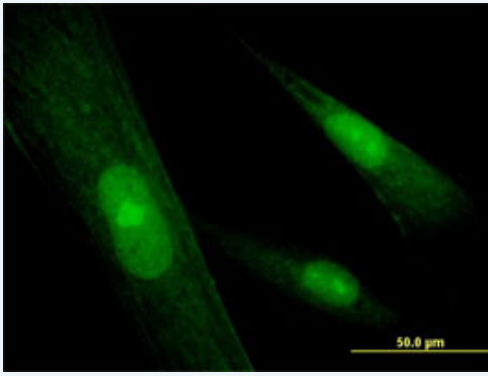


 [enlarge](#)

Immunofluorescence




 [enlarge](#)



[enlarge this image](#)

Immunofluorescence of purified MaxPab antibody to SRY on Hs 181.Tes cell. [antibody concentration 10 ug/ml]

 [Protocol Download](#)

Gene Information

Entrez GeneID: [6736](#)

GeneBank Accession#: [NM_003140.1](#)

Protein Accession#: [NP_003131.1](#)

Gene Name: SRY

Gene Alias: TDF,TDY

Gene Description: sex determining region Y

Omim ID: [480000](#)

Gene Ontology: [Hyperlink](#)

Gene Summary: This intronless gene encodes a transcription factor that is a member of the high mobility group (HMG)-box family of DNA-binding proteins. This protein is the testis-determining factor (TDF), which initiates male sex determination. Mutations in this gene give rise to XY females with gonadal dysgenesis (Swyer syndrome); translocation of part of the Y chromosome containing this gene to the X chromosome causes XX male syndrome. [provided by RefSeq]

Other Designations: OTTHUMP00000034324,essential protein for sex determination in human males,sex determining region protein,sex-determining region on Y,testis-determining factor

Related Disease

[Hypospadias](#) [Sex determination](#)

[服務條款](#) | [隱私權政策](#) | [著作及商標](#) | [網站地圖](#)

©2016 亞諾法生技股份有限公司 Abnova Corporation. 版權所有.