



SZABO SCANDIC

Part of Europa Biosite

Produktinformation



Forschungsprodukte & Biochemikalien



Zellkultur & Verbrauchsmaterial



Diagnostik & molekulare Diagnostik



Laborgeräte & Service

Weitere Information auf den folgenden Seiten!
See the following pages for more information!



Lieferung & Zahlungsart

siehe unsere [Liefer- und Versandbedingungen](#)

Zuschläge

- Mindermengenzuschlag
- Trockeneiszuschlag
- Gefahrgutzuschlag
- Expressversand

SZABO-SCANDIC HandelsgmbH

Quellenstraße 110, A-1100 Wien

T. +43(0)1 489 3961-0

F. +43(0)1 489 3961-7

mail@szabo-scandic.com

www.szabo-scandic.com

[linkedin.com/company/szaboscandic](https://www.linkedin.com/company/szaboscandic) 

TRIM21 (Human) Matched Antibody Pair

Catalog # : H00006737-AP11

規格 : [1 Set]

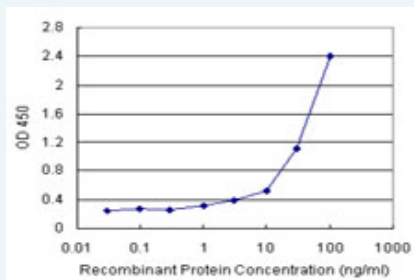
[List All](#)

Specification

Product Description: This antibody pair set comes with matched antibody pair to detect and quantify protein level of human TRIM21.

Reactivity: Human

Quality Control Testing: Standard curve using recombinant protein (H00006737-P01) as an analyte.



Sandwich ELISA detection sensitivity ranging from 1 ng/ml to 100 ng/ml.

Supplied Product: Antibody pair set content:
 1. Capture antibody: rabbit MaxPab® affinity purified polyclonal anti-TRIM21 (100 ug)
 2. Detection antibody: mouse monoclonal anti-TRIM21, IgG2a Kappa (20 ug)
 *Reagents are sufficient for at least 1-2 x 96 well plates using recommended protocols.

Storage Instruction: Store reagents of the antibody pair set at -20°C or lower. Please aliquot to avoid repeated freeze thaw cycle. Reagents should be returned to -20°C storage immediately after use.

MSDS:  [Download](#)

Applications

ELISA Pair (Recombinant protein)

 [Protocol Download](#)

Gene Information

Entrez GeneID: [6737](#)

Gene Name: TRIM21

Gene Alias: RNF81,RO52,SSA,SSA1

Gene Description: tripartite motif-containing 21

Omim ID: [109092](#)

Gene Ontology: [Hyperlink](#)

Application Image

ELISA Pair (Recombinant protein)

Gene Summary: This gene encodes a member of the tripartite motif (TRIM) family. The TRIM motif includes three zinc-binding domains, a RING, a B-box type 1 and a B-box type 2, and a coiled-coil region. The encoded protein is part of the RoSSA ribonucleoprotein, which includes a single polypeptide and one of four small RNA molecules. The RoSSA particle localizes to both the cytoplasm and the nucleus. RoSSA interacts with autoantigens in patients with Sjogren syndrome and systemic lupus erythematosus. Alternatively spliced transcript variants for this gene have been described but the full-length nature of only one has been determined. [provided by RefSeq]

Other Designations: Sicca syndrome antigen A, Sjogren syndrome antigen A1 (52kDa, ribonucleoprotein autoantigen SS-A/Ro), tripartite motif protein 21

Gene Pathway

[Systemic lupus erythematosus](#)

Related Disease

[Anemia, Sickle Cell Genetic Predisposition to Disease](#) [Lupus Erythematosus, Systemic](#) [Ovarian Neoplasms](#) [Sjogren's Syndrome](#)

[服務條款](#) | [隱私權政策](#) | [著作及商標](#) | [網站地圖](#)

©2016 亞諾法生技股份有限公司 Abnova Corporation. 版權所有.