



SZABO SCANDIC

Part of Europa Biosite

Produktinformation



Forschungsprodukte & Biochemikalien



Zellkultur & Verbrauchsmaterial



Diagnostik & molekulare Diagnostik



Laborgeräte & Service

Weitere Information auf den folgenden Seiten!
See the following pages for more information!



Lieferung & Zahlungsart

siehe unsere [Liefer- und Versandbedingungen](#)

Zuschläge

- Mindermengenzuschlag
- Trockeneiszuschlag
- Gefahrgutzuschlag
- Expressversand

SZABO-SCANDIC HandelsgmbH

Quellenstraße 110, A-1100 Wien

T. +43(0)1 489 3961-0

F. +43(0)1 489 3961-7

mail@szabo-scandic.com

www.szabo-scandic.com

[linkedin.com/company/szaboscandic](https://www.linkedin.com/company/szaboscandic) 

TRIM21 purified MaxPab rabbit polyclonal antibody (D01P) MaxPab®

Catalog # : H00006737-D01P

規格 : [100 ug]

[List All](#)

Specification

Product Description: Rabbit polyclonal antibody raised against a full-length human TRIM21 protein.

Immunogen: TRIM21 (NP_003132.2, 1 a.a. ~ 475 a.a) full-length human protein.

Sequence:
 MASAARLTMMWEEVTCPICLDPFVEPVSIECGHSFCQECISQVGKGGGS
 VCPVCRQRFLLNLRPNRQLANMVMNLKEISQEAAREGTQGERCAVHGE
 RLHLFCEKDGKALCWVCAQSRKHRDHAMVPLEEAAQEYQEKLQVALGE
 LRRKQELAEKLEVEIAIKRADWKKTVETQKSRIHAEFVQQKNFLVEEEQR
 QLQELEKDEREQLRILGEKEAKLAQQSQALQELISELDRRCHSSALELLQ
 EVIIMLERSSESWNLKDLDITSPELRSVCHVPLGKMLRRTCAVHITLDPDTAN
 PWLILSEDRRQVRLGDTQQSIPGNEERFDSYPMVLGAQHFHSGKHYWE
 VDVTKGEAWDLGVCRRSVRRKGFLLSSKSGFWTIWLWNKQKYEAGT
 YPQTPLHLQVPPCQVGIFLDYEAGMVSFYNITDHGSLIYSFSECAFTGPL
 RPFSPGFNDGGKNTAPLTLCLPLNIGSQGSTDY

Host: Rabbit

Reactivity: Human

Quality Control Testing: Antibody reactive against mammalian transfected lysate.

Storage Buffer: In 1x PBS, pH 7.4

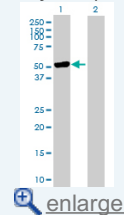
Storage Instruction: Store at -20°C or lower. Aliquot to avoid repeated freezing and thawing.

MSDS: [Download](#)

Datasheet: [Download](#)

Application Image

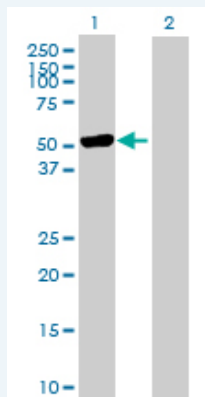
Western Blot (Transfected lysate)



[enlarge](#)

Applications

Western Blot (Transfected lysate)



Western Blot analysis of TRIM21 expression in transfected 293T cell line (H00006737-T01) by TRIM21 MaxPab polyclonal antibody.

Lane 1: TRIM21 transfected lysate(54.20 KDa).
 Lane 2: Non-transfected lysate.

Gene Information

Entrez GeneID: [6737](#)

GeneBank Accession#: [BC010861](#)

Protein Accession#: [NP_003132.2](#)

Gene Name: TRIM21

Gene Alias: RNF81,RO52,SSA,SSA1

Gene Description: tripartite motif-containing 21

Omim ID: [109092](#)

Gene Ontology: [Hyperlink](#)

Gene Summary: This gene encodes a member of the tripartite motif (TRIM) family. The TRIM motif includes three zinc-binding domains, a RING, a B-box type 1 and a B-box type 2, and a coiled-coil region. The encoded protein is part of the RoSSA ribonucleoprotein, which includes a single polypeptide and one of four small RNA molecules. The RoSSA particle localizes to both the cytoplasm and the nucleus. RoSSA interacts with autoantigens in patients with Sjogren syndrome and systemic lupus erythematosus. Alternatively spliced transcript variants for this gene have been described but the full-length nature of only one has been determined. [provided by RefSeq]

Other Designations: Sicca syndrome antigen A,Sjogren syndrome antigen A1 (52kDa, ribonucleoprotein autoantigen SS-A/Ro),tripartite motif protein 21

Gene Pathway

[Systemic lupus erythematosus](#)

Related Disease

[Anemia](#), [Sickle Cell Genetic Predisposition to Disease](#), [Lupus Erythematosus](#), [Systemic Ovarian Neoplasms](#), [Sjogren's Syndrome](#)