



SZABO SCANDIC

Part of Europa Biosite

Produktinformation



Forschungsprodukte & Biochemikalien



Zellkultur & Verbrauchsmaterial



Diagnostik & molekulare Diagnostik



Laborgeräte & Service

Weitere Information auf den folgenden Seiten!
See the following pages for more information!



Lieferung & Zahlungsart

siehe unsere [Liefer- und Versandbedingungen](#)

Zuschläge

- Mindermengenzuschlag
- Trockeneiszuschlag
- Gefahrgutzuschlag
- Expressversand

SZABO-SCANDIC HandelsgmbH

Quellenstraße 110, A-1100 Wien

T. +43(0)1 489 3961-0

F. +43(0)1 489 3961-7

mail@szabo-scandic.com

www.szabo-scandic.com

[linkedin.com/company/szaboscandic](https://www.linkedin.com/company/szaboscandic) 

TRIM21 monoclonal antibody (M01), clone 2C9

Catalog # : H00006737-M01

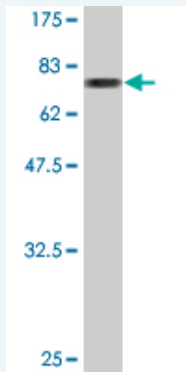
規格 : [100 ug]

[List All](#)

Specification

Product Description:	Mouse monoclonal antibody raised against a full-length recombinant TRIM21.
Immunogen:	TRIM21 (AAH10861, 1 a.a. ~ 475 a.a) full-length recombinant protein with GST tag. MW of the GST tag alone is 26 KDa.
Sequence:	MASAARLTMMWEEVTCPICLDPFVEPVSIECGHSFCQECISQVGKGGGS VCPVCRQRFLKLNLRPNRQLANMVMNLEISQEAREGTQGERCAVHGE RLHLFCEKDGKALCWVCAQSRKHRDHAMVPLEEAAQEYQEKLQVALGE LRRKQELAEKLEVEIAIKRADWKKTVETQKSRIHAEFVQKKNFLVEEEQR QLQELKDEREQLRILGEKEAKLAQQSQALQELISELDRRCHSSALELLQ EVIIVLRSSESWNLKDLDTSPELRSVCHVPLGKMLRRTCAVHITLDPDTAN PWLILSEDRRQVRLGDTQQSIPGNEERFDSYPMVLAQHFGHSGKHYWE VDVTGKEAWDLGVCRDSVRRKGHFLSSKSGFWTIWLNKQKYEAGT YPQTPLHLQVPPCQVGIFLDYEAGMVSFYNITDHGSLIYSFSECAFTGPL RPFSPGFNDGGKNTAPLTLCLPLNIGSQGSTDY
Host:	Mouse
Reactivity:	Human
Isotype:	IgG2a Kappa

Quality Control Testing: Antibody Reactive Against Recombinant Protein.



Western Blot detection against Immunogen (77.99 KDa) .

Storage Buffer: In 1x PBS, pH 7.4

Storage Instruction: Store at -20°C or lower. Aliquot to avoid repeated freezing and thawing.

MSDS: [Download](#)

Datasheet: [Download](#)

Applications

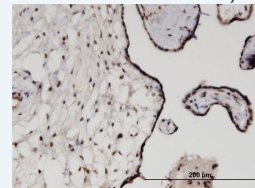
Western Blot (Recombinant protein)

[Protocol Download](#)

Application Image

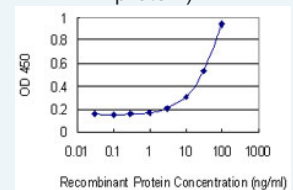
Western Blot (Recombinant protein)

Immunohistochemistry (Formalin/PFA-fixed paraffin-embedded sections)



[enlarge](#)

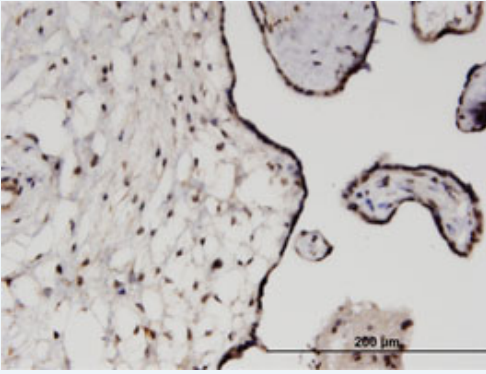
Sandwich ELISA (Recombinant protein)



[enlarge](#)

ELISA

Immunohistochemistry (Formalin/PFA-fixed paraffin-embedded sections)

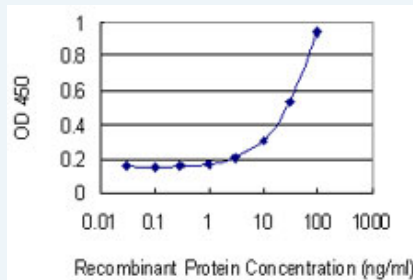


[enlarge this image](#)

Immunoperoxidase of monoclonal antibody to TRIM21 on formalin-fixed paraffin-embedded human placenta. [antibody concentration 3 ug/ml]

[Protocol Download](#)

Sandwich ELISA (Recombinant protein)



Detection limit for recombinant GST tagged TRIM21 is 1 ng/ml as a capture antibody.

[Protocol Download](#)

ELISA

Gene Information

Entrez GeneID: [6737](#)

GeneBank [BC010861](#)
Accession#:

Protein [AAH10861](#)
Accession#:

Gene Name: TRIM21

Gene Alias: RNF81,RO52,SSA,SSA1

Gene Description: tripartite motif-containing 21

Omim ID: [109092](#)

Gene Ontology: [Hyperlink](#)

Gene Summary: This gene encodes a member of the tripartite motif (TRIM) family. The TRIM motif includes three zinc-binding domains, a RING, a B-box type 1 and a B-box type 2, and a coiled-coil region. The encoded protein is part of the RoSSA ribonucleoprotein, which includes a single polypeptide and one of four small RNA molecules. The RoSSA particle localizes to both the cytoplasm and the nucleus. RoSSA interacts with autoantigens in patients with Sjogren syndrome and systemic lupus erythematosus. Alternatively spliced transcript variants for this gene have been described but the full-length nature of only one has been determined. [provided by RefSeq]

Other Sicca syndrome antigen A,Sjogren syndrome antigen A1 (52kDa,

Designations: ribonucleoprotein autoantigen SS-A/Ro), tripartite motif protein 21

Gene Pathway

[Systemic lupus erythematosus](#)

Related Disease

[Anemia, Sickle Cell Genetic Predisposition to Disease](#) [Lupus Erythematosus, Systemic](#)
[Ovarian Neoplasms](#) [Sjogren's Syndrome](#)

[服務條款](#) | [隱私權政策](#) | [著作及商標](#) | [網站地圖](#)

©2016 亞諾法生技股份有限公司 Abnova Corporation. 版權所有.