



# SZABO SCANDIC

Part of Europa Biosite

## Produktinformation



Forschungsprodukte & Biochemikalien



Zellkultur & Verbrauchsmaterial



Diagnostik & molekulare Diagnostik



Laborgeräte & Service

Weitere Information auf den folgenden Seiten!  
See the following pages for more information!



### Lieferung & Zahlungsart

siehe unsere [Liefer- und Versandbedingungen](#)

### Zuschläge

- Mindermengenzuschlag
- Trockeneiszuschlag
- Gefahrgutzuschlag
- Expressversand

### SZABO-SCANDIC HandelsgmbH

Quellenstraße 110, A-1100 Wien

T. +43(0)1 489 3961-0

F. +43(0)1 489 3961-7

[mail@szabo-scandic.com](mailto:mail@szabo-scandic.com)

[www.szabo-scandic.com](http://www.szabo-scandic.com)

[linkedin.com/company/szaboscandic](https://www.linkedin.com/company/szaboscandic) 

## TROVE2 monoclonal antibody (M01), clone 2B4

Catalog # : H00006738-M01

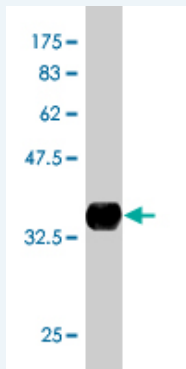
規格 : [ 100 ug ]

[List All](#)

### Specification

<b>Product Description:</b>	Mouse monoclonal antibody raised against a partial recombinant TROVE2.
<b>Immunogen:</b>	TROVE2 (NP_004591, 1 a.a. ~ 100 a.a) partial recombinant protein with GST tag. MW of the GST tag alone is 26 KDa.
<b>Sequence:</b>	MEESVNQMQLNEKQIANSQDGYVWQVTDNRLHRFLCFGSEGGTYI KEQKLGLENAAELIRLIEDGRGCEVIQEIKSFSQEGRTTKQEPMLFALAIC S
<b>Host:</b>	Mouse
<b>Reactivity:</b>	Human
<b>Isotype:</b>	IgG2a Kappa

**Quality Control Testing:** Antibody Reactive Against Recombinant Protein.



Western Blot detection against Immunogen (36.74 KDa) .

**Storage Buffer:** In 1x PBS, pH 7.4

**Storage Instruction:** Store at -20°C or lower. Aliquot to avoid repeated freezing and thawing.

**MSDS:** [Download](#)

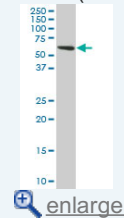
**Datasheet:** [Download](#)

### Applications

Western Blot (Cell lysate)

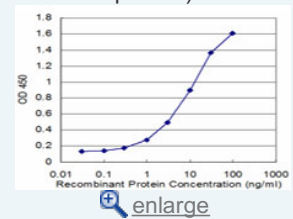
### Application Image

Western Blot (Cell lysate)

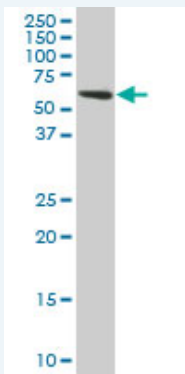


Western Blot (Recombinant protein)

Sandwich ELISA (Recombinant protein)



ELISA



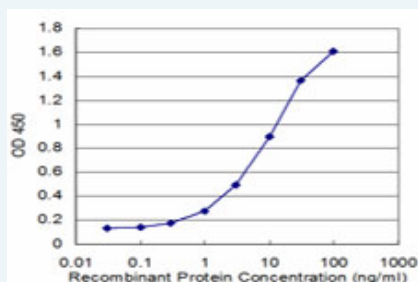
TROVE2 monoclonal antibody (M01), clone 2B4. Western Blot analysis of TROVE2 expression in HeLa ( Cat # L013V1 ).

[Protocol Download](#)

#### Western Blot (Recombinant protein)

[Protocol Download](#)

#### Sandwich ELISA (Recombinant protein)



Detection limit for recombinant GST tagged TROVE2 is approximately 0.3ng/ml as a capture antibody.

[Protocol Download](#)

#### ELISA

#### Gene Information

Entrez GeneID: [6738](#)

GeneBank [NM\\_004600](#)

Accession#:

Protein [NP\\_004591](#)

Accession#:

Gene Name: TROVE2

Gene Alias: RO60,SSA2

Gene Description: TROVE domain family, member 2

Description:

Omim ID: [600063](#)

Gene Ontology: [Hyperlink](#)

Other Designations: OTTHUMP00000033759,OTTHUMP00000033760,OTTHUMP00000033764,Sjogren syndrome antigen A2 (60kD, ribonucleoprotein autoantigen SS-A/Ro),Sjogren syndrome antigen A2 (60kDa, ribonucleoprotein autoantigen SS-A/Ro),bA101E13.2 (Sjogren syndrome antigen A2 (60kD, ri

#### Gene Pathway

Systemic lupus erythematosus

---

[服務條款](#) | [隱私權政策](#) | [著作及商標](#) | [網站地圖](#)

©2016 亞諾法生技股份有限公司 Abnova Corporation. 版權所有.