



SZABO SCANDIC

Part of Europa Biosite

Produktinformation



Forschungsprodukte & Biochemikalien



Zellkultur & Verbrauchsmaterial



Diagnostik & molekulare Diagnostik



Laborgeräte & Service

Weitere Information auf den folgenden Seiten!
See the following pages for more information!



Lieferung & Zahlungsart

siehe unsere [Liefer- und Versandbedingungen](#)

Zuschläge

- Mindermengenzuschlag
- Trockeneiszuschlag
- Gefahrgutzuschlag
- Expressversand

SZABO-SCANDIC HandelsgmbH

Quellenstraße 110, A-1100 Wien

T. +43(0)1 489 3961-0

F. +43(0)1 489 3961-7

mail@szabo-scandic.com

www.szabo-scandic.com

[linkedin.com/company/szaboscandic](https://www.linkedin.com/company/szaboscandic) 

TROVE2 monoclonal antibody (M03), clone 1F2

Catalog # : H00006738-M03

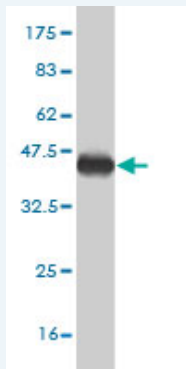
規格 : [100 ug]

[List All](#)

Specification

Product Description:	Mouse monoclonal antibody raised against a partial recombinant TROVE2.
Immunogen:	TROVE2 (NP_004591, 1 a.a. ~ 100 a.a) partial recombinant protein with GST tag. MW of the GST tag alone is 26 KDa.
Sequence:	MEESVNQMQLNEKQIANSQDGYVWQVTDNMRLHRFLCFGSEGGTYIKKQKLGLENAAELIRLIEDGRGCEVIQEIKSFSQEGRTTKQEPMLFALAIC S
Host:	Mouse
Reactivity:	Human
Isotype:	IgG2a Kappa

Quality Control Testing: Antibody Reactive Against Recombinant Protein.



Western Blot detection against Immunogen (36.74 KDa) .

Storage Buffer: In 1x PBS, pH 7.4

Storage Instruction: Store at -20°C or lower. Aliquot to avoid repeated freezing and thawing.

MSDS: [Download](#)

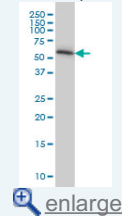
Datasheet: [Download](#)

Applications

Western Blot (Cell lysate)

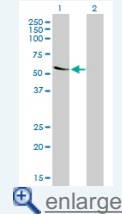
Application Image

Western Blot (Cell lysate)



[enlarge](#)

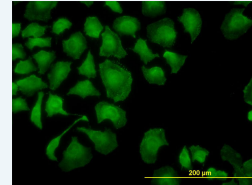
Western Blot (Transfected lysate)



[enlarge](#)

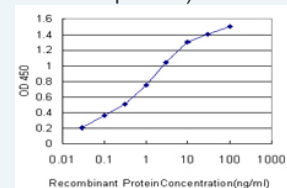
Western Blot (Recombinant protein)

Immunofluorescence



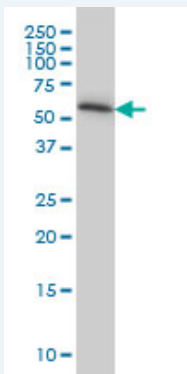
[enlarge](#)

Sandwich ELISA (Recombinant protein)



[enlarge](#)

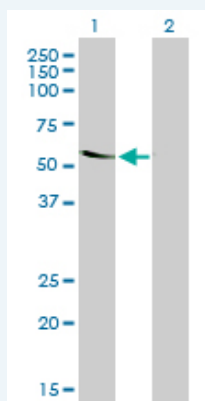
ELISA



TROVE2 monoclonal antibody (M03), clone 1F2 Western Blot analysis of TROVE2 expression in HeLa (Cat # L013V1).

 [Protocol Download](#)

Western Blot (Transfected lysate)



Western Blot analysis of TROVE2 expression in transfected 293T cell line by TROVE2 monoclonal antibody (M03), clone 1F2.

Lane 1: TROVE2 transfected lysate(60.7 KDa).

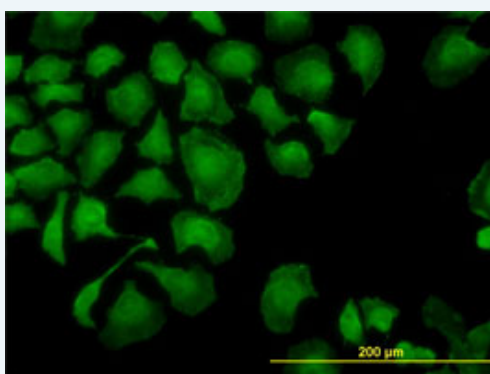
Lane 2: Non-transfected lysate.

 [Protocol Download](#)

Western Blot (Recombinant protein)


 [Protocol Download](#)

Immunofluorescence

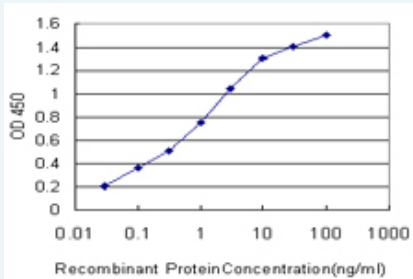


 [enlarge this image](#)

Immunofluorescence of monoclonal antibody to TROVE2 on HeLa cell. [antibody concentration 10 ug/ml]

 [Protocol Download](#)

Sandwich ELISA (Recombinant protein)



Detection limit for recombinant GST tagged TROVE2 is approximately 0.03ng/ml as a capture antibody.

 [Protocol Download](#)

ELISA

Gene Information

Entrez GeneID: [6738](#)

GeneBank [NM_004600](#)

Accession#:

Protein [NP_004591](#)

Accession#:

Gene Name: TROVE2

Gene Alias: RO60,SSA2

Gene Description: TROVE domain family, member 2

Omim ID: [600063](#)

Gene Ontology: [Hyperlink](#)

Other Designations: OTTHUMP00000033759,OTTHUMP00000033760,OTTHUMP00000033764,Sjogren syndrome antigen A2 (60kD, ribonucleoprotein autoantigen SS-A/Ro),Sjogren syndrome antigen A2 (60kDa, ribonucleoprotein autoantigen SS-A/Ro),bA101E13.2 (Sjogren syndrome antigen A2 (60kD, ri

Gene Pathway

[Systemic lupus erythematosus](#)

[服務條款](#) | [隱私權政策](#) | [著作及商標](#) | [網站地圖](#)

©2016 亞諾法生技股份有限公司 Abnova Corporation. 版權所有.