



SZABO SCANDIC

Part of Europa Biosite

Produktinformation



Forschungsprodukte & Biochemikalien



Zellkultur & Verbrauchsmaterial



Diagnostik & molekulare Diagnostik



Laborgeräte & Service

Weitere Information auf den folgenden Seiten!
See the following pages for more information!



Lieferung & Zahlungsart

siehe unsere [Liefer- und Versandbedingungen](#)

Zuschläge

- Mindermengenzuschlag
- Trockeneiszuschlag
- Gefahrgutzuschlag
- Expressversand

SZABO-SCANDIC HandelsgmbH

Quellenstraße 110, A-1100 Wien

T. +43(0)1 489 3961-0

F. +43(0)1 489 3961-7

mail@szabo-scandic.com

www.szabo-scandic.com

[linkedin.com/company/szaboscandic](https://www.linkedin.com/company/szaboscandic) 

TROVE2 monoclonal antibody (M04), clone 2E10

Catalog # : H00006738-M04

規格 : [100 ug]

[List All](#)

Specification

Product Description: Mouse monoclonal antibody raised against a full-length recombinant TROVE2.

Immunogen: TROVE2 (AAH36658, 1 a.a. ~ 538 a.a) full-length recombinant protein with GST tag. MW of the GST tag alone is 26 KDa.

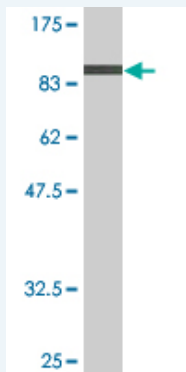
Sequence:
 MEESVNQMQLLNEKQIANSQDGYVWQVTDNRLHRFLCFGSEGGTYI
 KEQKLGLENAEALIRLIEDGRGCEVIQEIKSFSQEGRTTKQEPMLFALAIC
 SQCSDISTKQAAFKAIVSEVCRIPHTLFTFIQFKKDLKESMKCGMWGRAL
 RKAIDWYNEKGGMALALAVTKYKQRNGWSHKDLLRLSHLKPSSSEGLAI
 VTKYITKGWKEVHELKALSVETEKLLKYLEAVEKVKRTRDELEVIHLIE
 EHRLVREHLLTNHLKSKEVWKALLQETPLTALLRNLGKMTANSVLEPGNS
 EVSLVCEKLCNEKLLKKARIHPFHILIALETYKTHGLRGLKWRPDEEILK
 ALDAAFYKTFKTVEPTGKRFLAVDVSASMNQRVLGSILNASTVAAAMC
 MVTTRTEKDSYVAFSDEMPCPVTTDMTLQQVLMAMSQIPAGGTDCS
 LPMWAQKTNTPADVIVFTDNETFAGGVHPAIALREYRKMDIPAKLIVC
 GMTSNGFTIADPDDRGMLDMCGFDTGALDVIRNFTLDMI

Host: Mouse

Reactivity: Human

Isotype: IgG2a

Quality Control Testing: Antibody Reactive Against Recombinant Protein.



Western Blot detection against Immunogen (84.92 KDa) .

Storage Buffer: In 1x PBS, pH 7.4


Storage Instruction: Store at -20°C or lower. Aliquot to avoid repeated freezing and thawing.

MSDS:  [Download](#)

Datasheet:  [Download](#)

Applications

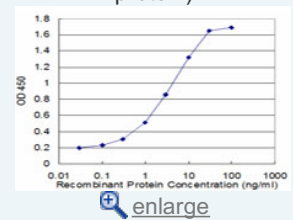
Western Blot (Recombinant protein)

 [Protocol Download](#)

Application Image

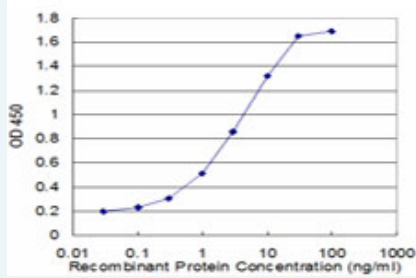
Western Blot (Recombinant protein)

Sandwich ELISA (Recombinant protein)



ELISA

Sandwich ELISA (Recombinant protein)



Detection limit for recombinant GST tagged TROVE2 is approximately 0.1ng/ml as a capture antibody.

 [Protocol Download](#)

ELISA

Gene Information

Entrez GeneID: [6738](#)

GeneBank Accession#: [BC036658](#)

Protein Accession#: [AAH36658](#)

Gene Name: TROVE2

Gene Alias: RO60,SSA2

Gene Description: TROVE domain family, member 2

Omim ID: [600063](#)

Gene Ontology: [Hyperlink](#)

Other Designations: OTTHUMP00000033759,OTTHUMP00000033760,OTTHUMP00000033764,Sjogren syndrome antigen A2 (60kD, ribonucleoprotein autoantigen SS-A/Ro),Sjogren syndrome antigen A2 (60kDa, ribonucleoprotein autoantigen SS-A/Ro),bA101E13.2 (Sjogren syndrome antigen A2 (60kD, ri

Gene Pathway

[Systemic lupus erythematosus](#)

[服務條款](#) | [隱私權政策](#) | [著作及商標](#) | [網站地圖](#)

©2016 亞諾法生技股份有限公司 Abnova Corporation. 版權所有.